

# പതിനാലാം കേരള നിയമസഭ

## നാലാം സമ്മേളനം

നക്ഷത്രചിഹ്നമിടാത്ത ചോദ്യം നം. 4132

16.03.2017 -ലെ മറുപടി

### ഭൂജല നിരപ്പ്

ചോദ്യം

ശ്രീ. പി.കെ.ശശി

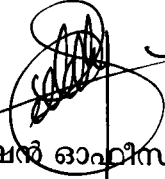
മറുപടി

മാത്യു ടി. തോമസ്

(ജലവിഭവ വകുപ്പുമന്ത്രി)

എ)	<p>കേന്ദ്ര ഭൂജല വകുപ്പ് പഠനപ്രകാരം സംസ്ഥാനത്ത് തിരഞ്ഞെടുത്ത കിണറുകളിൽ നടത്തിയ പരിശോധനകളിൽ ഭൂജല നിരപ്പ് എത്ര താഴ്ന്നിട്ടുണ്ട് എന്ന് റിപ്പോർട്ട് ചെയ്തിട്ടുണ്ട് എന്നും ഇതിനുള്ള കാരണങ്ങളായി പഠന റിപ്പോർട്ടിൽ പറയുന്നത് എന്തൊക്കെയാണെന്നും വ്യക്തമാക്കുമോ;</p>	എ)	<p>കേന്ദ്ര ഭൂജല ബോർഡ് കേരള റീജിയൺ നടത്തിയ പഠനപ്രകാരം 2017 ജനുവരി മാസത്തിൽ ലഭിച്ച ജലവിതാനത്തിന്റെ കണക്കു 2016 ജനുവരി മാസത്തിൽ ലഭിച്ച ജലവിതാനത്തിന്റെ കണക്കു താരതമ്യം ചെയ്യുമ്പോൾ 71 ശതമാനം കിണറുകളിൽ രണ്ട് മീറ്ററും 8 ശതമാനം കിണറുകളിൽ രണ്ട് മുതൽ നാല് മീറ്റർ വരെയും ജലവിതാനത്തിൽ കുറവുള്ളതായി കാണുന്നു. പ്രധാനമായും മഴയില്ലാത്ത ക്രമാതീതമായ കുറവാണ് ജലവിതാനത്തിലെ കുറവിന് കാരണമായി കണക്കാക്കിയിട്ടുള്ളത്.</p>
ബി)	<p>പഠന റിപ്പോർട്ടിന്റെ പകർപ്പ് ലഭ്യമാക്കുമോ;</p>	ബി)	<p>പകർപ്പ് അന്വേഷ്യം 1 ആയി ചേർക്കുന്നു</p>
സി)	<p>ഭൂജല നിരപ്പു താഴുന്നതിന് കാരണങ്ങളായ ജലോപയോഗം, മൺസൂൺ മഴ ലഭ്യതയിലെ ഘടനാമാറ്റം തുടങ്ങിയവ സംബന്ധിച്ച് ജലവിഭവ വകുപ്പ് എന്തെങ്കിലും പഠനം നടത്തിയിട്ടുണ്ടോ; വിശദാംശം ലഭ്യമാക്കുമോ;</p>	സി)	<p>ഭൂജല വകുപ്പ് പഠനങ്ങൾ നടത്തിയിട്ടില്ല.</p>
ഡി)	<p>വേനൽക്കാലത്ത് കഴിഞ്ഞ പത്ത് വർഷക്കാലയളവിലെ സംസ്ഥാന ഭൂഗർഭജലനിരപ്പ് (വർഷം തിരിച്ച്) എത്ര എന്നും ഇതിൽ ഏറ്റവും കൂടുതൽ ജലനിരപ്പ് താണത് ഏതുവർഷത്തിലാണ് എന്നും വ്യക്തമാക്കുമോ;</p>	ഡി)	<p>സംസ്ഥാന ഭൂജല വകുപ്പ് സംസ്ഥാനത്ത് നിരീക്ഷണകിണറുകളിൽ നിന്നും ജലവിതാനം ശേഖരിച്ച് പഠനം നടത്തിവരുന്നു. ഇതനുസരിച്ച് 2007 മുതൽ ശേഖരിച്ച ഡാറ്റാ പ്രകാരം സംസ്ഥാനത്തിലെ എല്ലാ ജില്ലകളിലും 2017 ഫെബ്രുവരി മാസത്തിലെ ജലനിരപ്പ് മറ്റു വർഷങ്ങളിലെ ശരാശരി ജലവിതാനത്തിലും താഴെയാണ്. പട്ടിക അന്വേഷ്യം 2 ആയി ചേർക്കുന്നു</p>
ഇ)	<p>സംസ്ഥാനത്ത് ഓരോ വർഷവും കൃഷിക്കും കുടിവെള്ളത്തിനുമായി എത്ര അളവ് ഭൂഗർഭജലം ഉപയോഗിക്കുന്നു എന്നും മൺസൂൺ തുടങ്ങി പ്രകൃത്യാ നമുക്കു ലഭിക്കുന്ന ജലലഭ്യത എത്ര എന്നും ലഭ്യമാകുന്ന ഭൂജലത്തിൽ നിന്നും നഷ്ടപ്പെടുന്ന ഭൂജലം എത്ര എന്നും</p>		<p>ഭൂജല വകുപ്പും കേന്ദ്ര ഭൂജല ബോർഡും സംയുക്തമായി സംസ്ഥാനത്തെ ഭൂജല ലഭ്യതയെ കുറിച്ച് പഠനം നടത്തി റിപ്പോർട്ടു തയ്യാറാക്കി വരുന്നു. 2013-ലെ ഡൈനാമിക് ഗ്രൗണ്ട് വാട്ടർ റിസോഴ്സ് ഓഫ് കേരള റിപ്പോർട്ടു പ്രകാരമുള്ള ഭൂജല ലഭ്യതയുടെ കണക്ക്</p>

<p>വ്യക്തമാക്കുമോ?</p>	<p>അനുബന്ധ 3 ആയി ചേർക്കുന്നു ഇതനുസരിച്ച് വാർഷിക ശ്രദ്ധ സംഹേദനത്തിന്റെ അളവ് 6.25 ബില്യൻ ക്യൂബിക് മീറ്റർ ആണ്. വാർഷിക ശ്രദ്ധലഭ്യത 5.65 ബില്യൻ ക്യൂബിക് മീറ്റർ കാർഷിക ഉപഭോഗം 1.18 ബില്യൻ ക്യൂബിക് മീറ്റർ കടിവെള്ളത്തിനും വ്യാവസായിക ആവശ്യങ്ങൾക്കുമായി 1.45 ബില്യൻ ക്യൂബിക് മീറ്റർ ആണ് കണക്കെക്കിയിട്ടുള്ളത്. 2013 മാർച്ചിന് ശേഷമുള്ള ശ്രദ്ധത്തിന്റെ ലഭ്യതയുടെയും ശ്രദ്ധ ഉപഭോഗത്തിന്റെയും കണക്കുകൾ സംബന്ധിച്ച പഠനങ്ങൾ നടന്നു വരുന്നു ഇതിൽ വാർഷിക ശ്രദ്ധസംഹേദനത്തിന്റെ അളവായ 6.25 ബില്യൻ ക്യൂബിക് മീറ്ററിൽ നിന്നും 0.60 ബില്യൻ ക്യൂബിക് മീറ്റർ ശ്രദ്ധ ഒഴുക്കി നഷ്ടപ്പെടുന്നതായാണ് കണക്കെക്കിയിട്ടുള്ളത്.</p>
------------------------	--

  
 സെക്ഷൻ ഓഫീസർ

**REPORT NO. / 2016-17**



# **REPORT ON GROUNDWATER MONITORING IN KERALA DURING JANUARY 2017**



**CENTRAL GROUND WATER BOARD  
MINISTRY OF WATER RESOURCES, RIVER DEVELOPMENT &  
GANGA REJUVENATION  
GOVERNMENT OF INDIA  
KERALAREGION**

**THIRUVANANTHAPURAM**

**FEBRUARY 2017**

**REPORT ON GROUND WATER MONITORING IN KERALA STATE DURING  
JANUARY2017**

<b>CONTENTS</b>		
1	Introduction	1
2	Hydrogeology	2
3	Hydrometeorology	4
4	Depth to Water Level Scenario during January 2017	9
5	Water Level Fluctuation	12
<b>List of Figures</b>		
3.1	Comparison of rainfall occurred during and previous year of the same period	5
3.2	Comparison of rainfall occurred during and previous monitoring season	7
3.3	Comparison of rainfall of current monitoring season with its normal rainfall	7
3.4	Departure of rainfall from its normal of current monitoring season	8
4.1	Depth To Water Level (January 2017)	11
5.1	Annual Water Level fluctuation (January 2017 and January 2016)	14
5.2	Water level fluctuation between January 2017 and April 2016	17
5.3	Water Level Fluctuation with respect to Decadal Mean (January 2017 vs mean (January 2007-2016))	20
<b>List of Tables</b>		
1.1	Geological Succession of Kerala	2
3.1	Departure of rainfall during monitoring season with its normal	4
3.2	Comparison of rainfall occurred during current monitoring season and previous year of the same period	5
3.3	Comparison of rainfall occurred during current monitoring	6

	season and previous monitoring season	
4.1	District wise well frequency for different ranges of Depth to water level during January 2017	10
5.1	District wise annual water level fluctuation and frequency Distribution for different ranges from January 2017 – January 2016	13
5.2	District wise annual water level fluctuation and frequency Distribution for different ranges from January 2017 – April 2016	16
5.3	District wise fluctuation and frequency distribution for different ranges from January 2017 – decadal mean (January 2007- 2016)	19
<b>Annexure</b>		
<b>I</b>	Station –wise Ground Water Level data in Kerala State during January 2017	21-52

## 1. INTRODUCTION

Kerala State is a narrow stretch of land lies between North latitudes 08°18' and 12°48' and East longitudes 74°52' and 77°22' covering an area of 38863sq.km, which is bordered by the Lakshadweep Sea on the western side and Tamil Nadu and Karnataka States on the eastern side. The length of the State from north to south is 560 km and the average width is 70 km, with a maximum of 125 km.

Due to urbanisation and industrialisation the stress on groundwater has increased in past few years, which resulted in problems like decline in water table and contamination of groundwater at many places. The shortage of rainfall in recent years and the increased utilisation of ground water caused concern among the public that water may become scarce commodity in future.

In order to assess the real situation of ground water conditions, it is very essential to monitor the groundwater level and water quality over time and space. Central Ground Water Board has established 1680 Ground Water Monitoring Wells (GWMW) throughout the Kerala State for monitoring water level and quality. Water level is being monitored four times a year during January, April, August and November months and water quality is being monitored from the water samples collected from GWMW during April. The total number of GWMW as on 31.03.2016 is 1680. Out of these, 1411 are dug wells tapping phreatic aquifer and 269 are borewells / tubewells tapping deeper aquifers of confined /semi-confined nature. These GWMW are spread over in all the physiographic divisions of the State.

The data of these GWMW were analysed to understand the depth to water level scenario in the State, annual fluctuation in the water levels due to the monsoon recharge, long term trend in water levels and the nature of the quality of ground water. Depth to water level maps and water level fluctuation maps are prepared using the data of GWMW tapping phreatic aquifer.

## 2. HYDROGEOLOGY

The occurrence and movement of ground water is mainly controlled by factors like physiography, slope, soil and geological setting of the area.

### Physiography

Physiographically the State is divided into three major units viz. the lowland, the midland and the high land. The lowlands are those areas where the elevation is less than 7.6m above mean sea level (amsl) whereas the elevation of the midland ranges from 7.6 to 76 m amsl and that of the highland is more than 76 m amsl. Along the highlands there are two distinct plateau regions - Wayanad plateau and Munnar plateau.

### Geology

Geologically 88% of the State is underlain by crystalline rocks of Archaean age, which is a part of the peninsular shield. The crystalline complex of Kerala is composed of charnockites, gneisses, schists, migmatites and rocks of the Wayanad supracrustals. Along the western portion of the State the crystalline rocks are overlain by the sedimentary formations of Tertiary age and Recent alluvial formations. The Tertiary sequence of formations has been divided into four beds viz. Alleppey, Vaikom, Quilon and Warkali, the age of which ranges from Eocene to Lower Miocene. Laterites of Sub-Recent age derived from the crystalline as well as sedimentary formations are seen all along the midlands. Along the coastal plains, the sedimentaries and laterites are overlain by alluvium of Recent age. The geological succession in Kerala is given in Table 1.

**Table 2.1: Geological Succession of Kerala**

<b>AGE</b>	<b>FORMATION</b>	<b>LITHOLOGY</b>
Recent	Alluvium	Sands, Clays, riverine alluvium etc. and flood plain deposits of Kuttanad area
Sub-recent	Laterite	Derived from crystallines and sedimentaries
	Warkali	Sand stones, clays with lignite seams
	Quilon	Limestone marl and clay
Tertiary	Vaikom	Sandstones with pebbles and gravel beds, clay and lignite
	Alleppey	Carbonaceous clay and fine sand
Undated	Intrusive	Dolerites, Gabbros, Granites, Quartzo-feldspathic Veins
	Wayanad group	Granitic gneiss, Schists etc.
Archaean	Charnockites	Charnockites and associated rocks
	Khondalites	Khondalites suite of rocks and its associates

## **Occurrence of Groundwater**

Ground water occurs under phreatic as well as in confined and semi-confined conditions. The weathered crystallines, laterites and the alluvial formations form the major phreatic aquifers, whereas the deep fractures in the crystallines and the granular zones of the Tertiary sedimentary formations form the confined and semi-confined aquifers.

Most widely distributed lithological unit is the laterite, which forms potential aquifer along valley and the thickness of this formation varies from a few meters to about 30m. The depth to water level in the formation ranges from less than a meter to 25 mbgl. Wells with the yields in the range of 0.5 - 6 m<sup>3</sup> per day are feasible in this formation.

Thick zones of weathered crystallines are seen along midland region. The midland area sustains medium capacity dug wells for irrigation. Along the hill ranges, the crystalline rocks are covered by thin weathered zone. Along topographic lows dug wells are feasible that can cater to domestic needs. Bore wells tapping deeper fractured aquifer are feasible along potential fractures in the midland and hill ranges. Potential fractures are seen down to 240 mbgl and the most productive zone is between 60 and 175 mbgl. The discharge of these bore wells range between 36,000 and 1, 25,000 lph.

Of the four Tertiary beds, the two beds viz. the Vaikom and the Warkali form potential aquifers. The oldest Alleppey beds contain brackish water as inferred from electrical logs, whereas the Quilon beds are poor aquifers. The Vaikom aquifer is seen all along the coast between Quilon and Ponnani and the piezometric surface ranges from 1 to 18 m above msl. The aquifer is extensively developed between Quilon and Kayamkulam. The aquifer contains fresh water south of Karuvatta in Alleppey district and also in isolated pockets in Ernakulam district. The Warkali aquifer is seen south of Cochin. The piezometric head in the aquifer varies from 2.6 m amsl to 10 m bmsl. The aquifer is largely developed in and around Alleppey.

The alluvium forms potential aquifer along the coastal plains and ground water occurs under phreatic and semi-confined conditions in this aquifer. The thickness of this formation varies from few meters to above 100 m and the depth to water level ranges from less than a meter to 6 mbgl. Filter point wells are feasible wherever the saturated thickness exceeds 5 m.



### 3. HYDROMETEOROLOGY

Rainfall is the major source of ground water recharge and the rainfall pattern plays an important role on the water levels in the phreatic as well as deeper confined aquifers. The rainfall data received from India Meteorological Department, Thiruvananthapuram for the period of 01-11 -2016 to 31-12 -2016 is analysed.

The rainfall occurred during the period 01-11-2016 to 31-12-2016 ranged from 55 mm in Kasargod district to 363 mm in Palakkad district. The state has received an average rainfall of 155 mm which is 64 % less in comparison to the normal.

#### Rainfall Distribution

The actual rainfall received during the period is compared with its normal. Rainfall distribution was deficient in all districts, more than 50% in eleven districts and less than 50% in three districts. No normal rainfall was received in during this period of monitoring season. The details are given in table - 3.1

**Table-3.1 DEPARTURE OF RAINFALL DURING THE MONITORING SESSON WITH ITS NORMAL (1 November to 31 December-2016)**

SL.No.	Name of the District	Actual (1 Nov to 31 Dec-2016) (mm)	Normal (1 Nov to 31 Dec-2016) (mm)	Departure in %
1	Allapuzha	178.0	519.0	-66
2	Kannur	73.0	309.8	-76
3	Ernakulam	235.0	444.9	-47
4	Idukki	147.1	518.6	-72
5	Kasaragod	55.3	306.4	-82
6	Kollam	318.3	577.2	-45
7	Kottayam	212.6	485.8	-56
8	Kozhicode	64.9	378.1	-83
9	Malappuram	100.6	403.9	-75
10	Palakkad	109.8	371.6	-70
11	Pathanamthitta	363.9	578.5	-37
12	Trivandrum	102.0	475.8	-79
13	Trichur	118.7	443.2	-73
14	Waynad	88.1	287.6	-69

**Comparison of rainfall for the period from 01-11-2016 to 31-12-2016 with the same period during the previous year.**

The rainfall occurred during the period 01-11-2016 to 31-12-2016 was compared with the same period of the previous year ie. 01-11-2015 to 31-12-2015. The rainfall variation ranges from -23 at Kollam to -78 at Trivandrum. All the districts received less rainfall than the previous year of same season. In general, the state has received comparatively low rainfall than the same season of the previous year. The details are given in table-3.2 and in Fig-3.1

**Table-3.2 COMPARISON OF RAINFALL DURING CURRENT SEASON (Nov-Dec. 2016) WITH THE SAME PERIOD OF THE PREVIOUS YEAR**

SL.No.	Name of the District	1 Nov. to 31 Dec-2016	1 Nov to 31 Dec-2015	Diff.	Diff.in %
1	Allapuzha	178	321	-143	-44
2	Kannur	73	175	-102	-58
3	Ernakulam	235	490	-255	-52
4	Idukki	147	382	-235	-61
5	Kasaragod	55	103	-47	-46
6	Kollam	318	414	-96	-23
7	Kottayam	213	334	-122	-36
8	Kozhicode	65	197	-132	-67
9	Malappuram	101	253	-153	-60
10	Palakkad	110	224	-114	-51
11	Pathanamthitta	364	455	-91	-20
12	Trivandrum	102	466	-365	-78
13	Trichur	119	275	-156	-57
14	Waynad	88	145	-57	-39

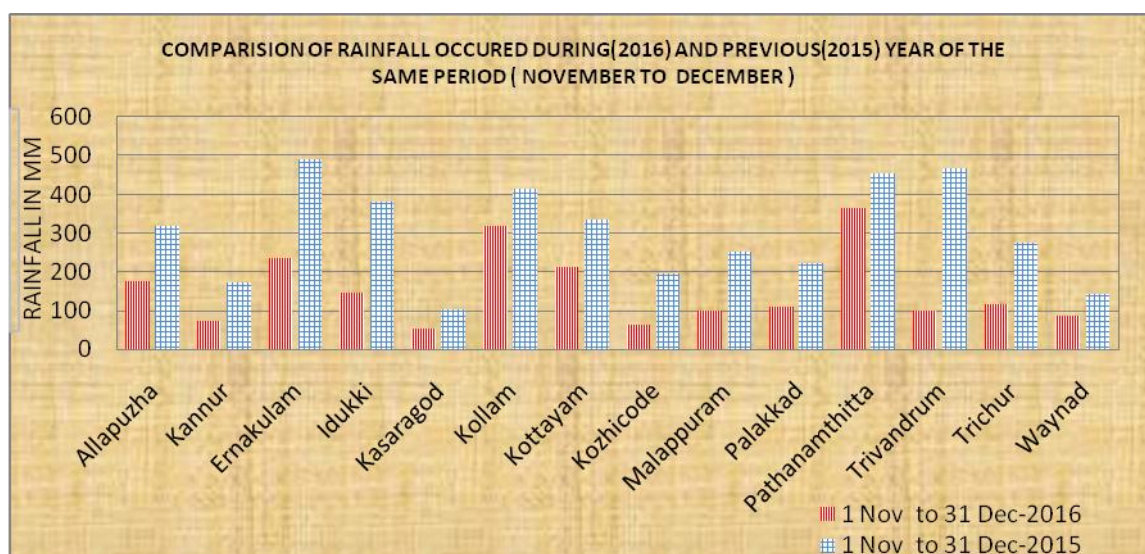


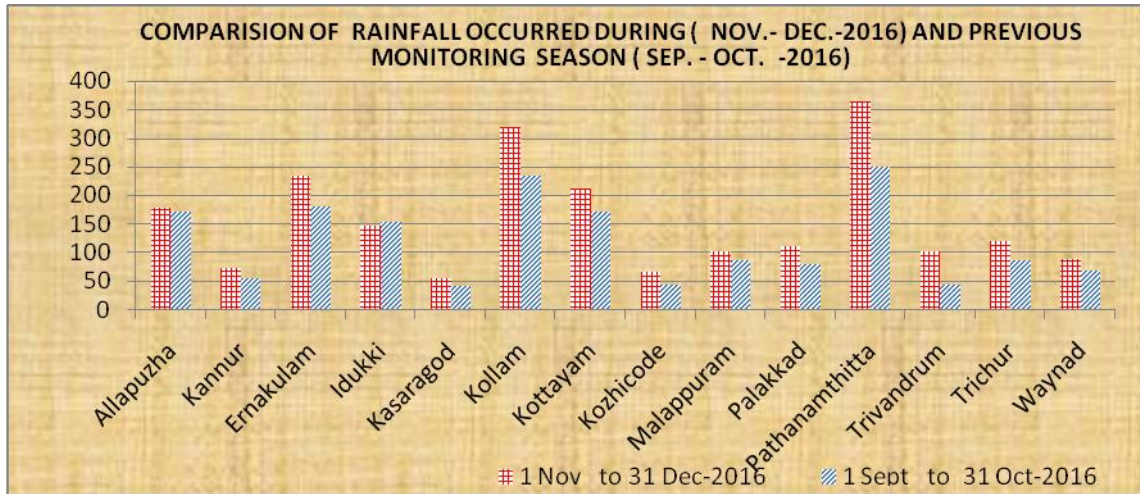
Fig:-3.1 Comparison of rainfall occurred during and previous year of the same period

### **Comparison of rainfall during the period of November-December 2016 with rainfall during the period September-October 2016**

The rainfall occurred during the period 01-11-2016 to 31-12-2016 (effective for the present ground water monitoring) was compared with the rainfall during 1<sup>st</sup> September to 31<sup>st</sup> October- 2016 (effective for the previous ground water monitoring during November 2016). The rainfall variation ranges from - 4at Idukki to 132 at Trivandrum district. All the districts received comparatively more amount of rainfall during the season November-december 2016 compared to monitoring season of September-October 2016. The State received an average rainfall of 155 mm during the period for 1<sup>st</sup> November to 31<sup>st</sup> st December 2016 and 123 mm during the period from 1<sup>st</sup> September to 31 st October,2016. The details are given in table-3.3 and in Fig-3.2

**Table-3.3 COMPARISON OF RAINFALL OCCURRED DURING CURRENT MONITORING SEASON AND PREVIOUS MONITOTRING SEASON**

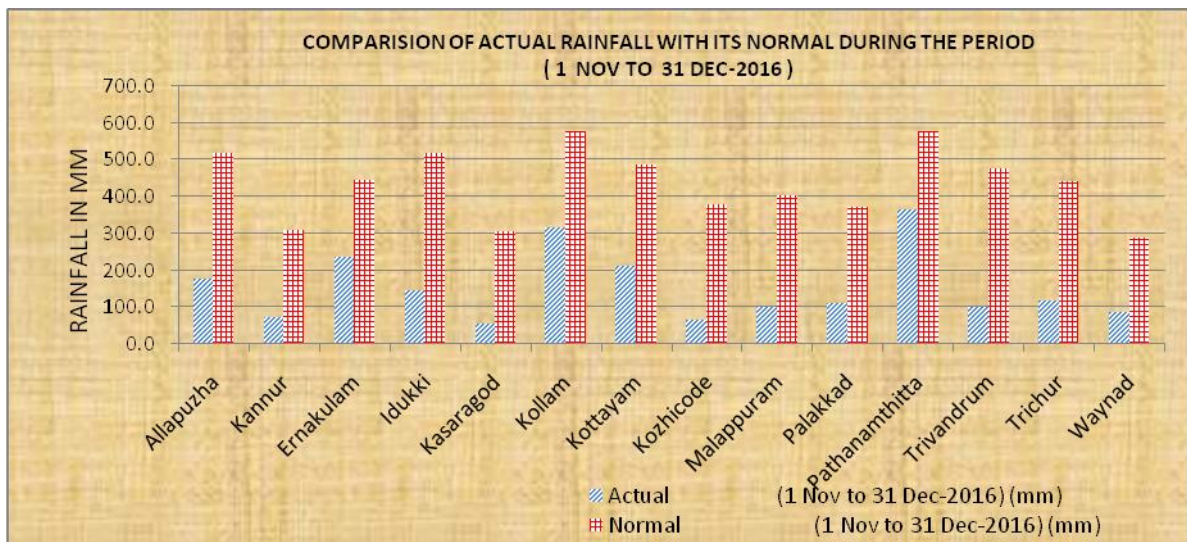
SL.No.	Name of the District	1 Nov to 31 Dec- 2016	1 Sept to 31 Oct-2016	Diff	Diff in %
1	Allapuzha	178	172	6	3
2	Kannur	73	55	18	33
3	Ernakulam	235	181	54	30
4	Idukki	147	153	-6	-4
5	Kasaragod	55	40	15	38
6	Kollam	318	233	85	37
7	Kottayam	213	172	41	24
8	Kozhicode	65	43	22	51
9	Malappuram	101	87	14	16
10	Palakkad	110	79	31	39
11	Pathanamthitta	364	249	115	46
12	Trivandrum	102	44	58	132
13	Trichur	119	87	32	36
14	Waynad	88	68	20	30



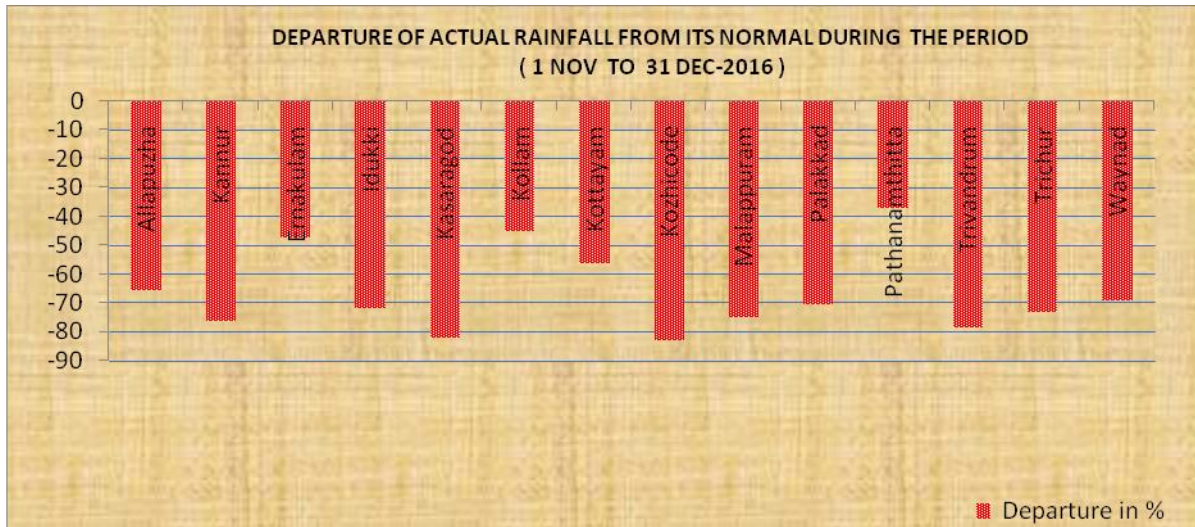
**Fig:-3.2 Comparison of rainfall occurred during and previous monitoring season**

**Comparison of rainfall during the period November-December 2016 with its normal rainfall**

The rainfall occurred during the period 01-11-2016 to 31-12-2016 was compared with its normal. The rainfall variation ranges from -37 at Pathanamthitta district to -83 at Kozhikode. All the fourteen district received comparatively less rainfall while comparing with its normal. The comparison of this Non-monsoon rainfall with normal rainfall is depicted in Fig-3.3 and departure from normal is depicted in Fig-3.4



**Fig:-3.3 Comparison of rainfall of this monitoring season with its normal rainfall**



**IMD CLASSIFICATION**

+20 % or more Excess, +19 % to -19 % Normal, -20 % to -59% Deficient, -60 % to -99% Scanty

**Fig-3.4 Departure of rainfall from its normal of this monitoring season**

#### **4. DEPTH TO WATER LEVEL SCENARIO DURING JANUARY 2017**

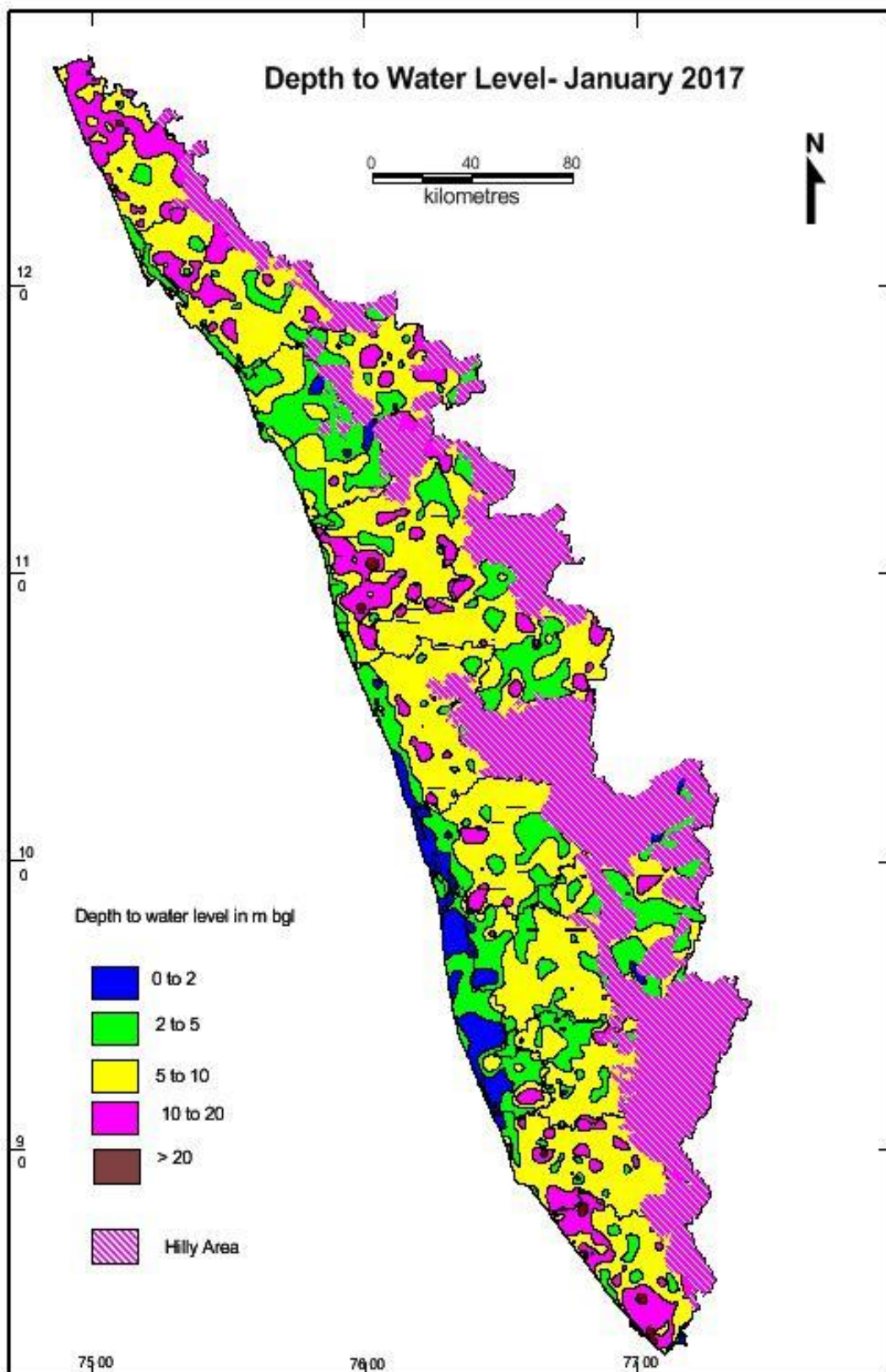
The depth to water level mostly depends on the hydrogeological conditions of the area as well as topography, rainfall pattern etc. In coastal plains the depth to water level is generally restricted to 6 mbgl. In midland areas, where the undulating topography is seen, the depth to water level generally varies from near ground level to 25 mbgl. The variation is mostly due to topographical variations, thickness of lateritic overburden etc. In areas where laterites are underlain by sedimentary aquifers of Tertiary age, the water level goes very deep, even to the extent of 58 mbgl. In highlands the depth to water level is in the range of few cm to 17 mbgl.

Ground water in the state occurs under unconfined , semi-confined and confined conditions. The unconfined aquifer is mainly developed through dug wells while the semi-confined and confined aquifer are developed through tube wells/ bore wells.

During the month of January 2017 the depth to water level in the State varied widely from 0.1 to 40 mbgl in dug wells. Shallow water level in the range of 0 – 2 mbgl is seen in Alappuzha district, coastal tracts of Kollam ,Ernakulam, Thrissur and Kozhikkod districts and in the valley portion located in the eastern part of Idukki districts and also as small patches in Kottayam and Pathanamthitta districts. The areas falling in the midland region generally show water level in the range of 5 – 10 mbgl. Water level of more than 20 m bgl is seen as isolated patches in Thiruvananthapuram, Malappuram and Kasargod districts. The district-wise well frequency for different ranges of depth to water level during January 2017 has been prepared and is given in Table 4.1. The analysis of the data reveals that 81.24 % of the monitoring wells (GMMWs) have water levels within the range of 0.1 to 10 mbgl. Deeper water level (> 20 mbgl) is seen in Thiruvananthapuram (Poovar, Pulluvila and Kanjiramkulam), Malappuram and Kasargod district as isolated pockets which can be attributed to the local hydrogeological conditions such as thick lateritic overburden and the wells situated at elevated areas. The map showing the depth to water level in Kerala State during January 2017 is given in Figure 4.1. In Kollam, Kottayam, Thrissur and Palakkad districts, more than 50% of monitoring wells show water level greater than 5 m bgl. Deepest water level is recorded in Thiruvananthapuram district.

**Table 4.1: District Wise Well Frequency For Different Ranges Of Depth To Water Level For January 2017**

District	No. of Wells Analysed	Depth to Water level(mbgl)		No. &Percentage of Wells Showing Depth to Water Table (mbgl) in the Range of					
		Min	Max	0.0 – 2.0	2.0 – 5.0	5.0 – 10.0	10.0 – 20.0	20.0 – 40.0	> 40.0
ALAPPUZHA	83	0.30	20.15	40 48.19%	30 36.14%	4 4.82%	8.9.64%	1 1.20%	0
ERNAKULAM	132	0.30	17.40	21 15.91%	38 28.79%	63 47.73%	10 7.58%	0	0
IDUKKI	71	0.10	13.65	7 9.86%	37 52.11%	23 32.39%	4 5.63%	0	0
KANNUR	106	1.50	21.45	3 2.83%	26 24.53%	48 45.28%	28 26.42%	1 0.94%	0
KASARGOD	119	1.95	23.40	2 1.68%	9 7.56%	52 43.70%	54 45.38%	2 1.68%	0
KOLLAM	113	0.95	27.00	6 5.31%	17 15.04%	61 53.98%	27 23.89%	2 1.77%	0
KOTTAYAM	99	1.24	12.00	7 7.07%	33 33.33%	54 54.55%	5 5.05%	0	0
KOZHIKODE	93	1.09	15.46	6 6.45%	47 50.54%	34 36.56%	6 6.45%	0	0
MALAPPURAM	123	1.30	40.00	3 2.44%	29 23.58%	59 47.97%	27 21.95%	5121 4.07% <sup>69</sup>	0
PALAKKAD	135	1.05	38.80	3 2.22%	42 31.11%	69 51.11%	14 10.37%	71466 5.19%	0
PATHANAMTHITTA	87	1.40	16.90	4 4.60%	37 42.53%	41 47.13%	5 5.75%	0	0
THIRUVANANTHAPURAM	115	1.44	34.25	3 2.61%	21 18.26%	48 41.74%	34 29.57%	9 7.83%	0
THRISSUR	121	1.12	13.79	9 7.44%	35 28.93%	67 55.37%	10 8.26%	0	0
WAYANAD	69	1.04	19.78	5 7.25%	20 28.99%	28 40.58%	16 23.19%	0	0
<b>TOTAL</b>	<b>1466</b>	<b>0.10</b>	<b>40.00</b>	<b>119</b>	<b>421</b>	<b>651</b>	<b>248</b>	<b>27</b>	<b>0</b>



**Figure 4.1: Depth to Water Level during January 2017**



## **5. WATER LEVEL FLUCTUATION**

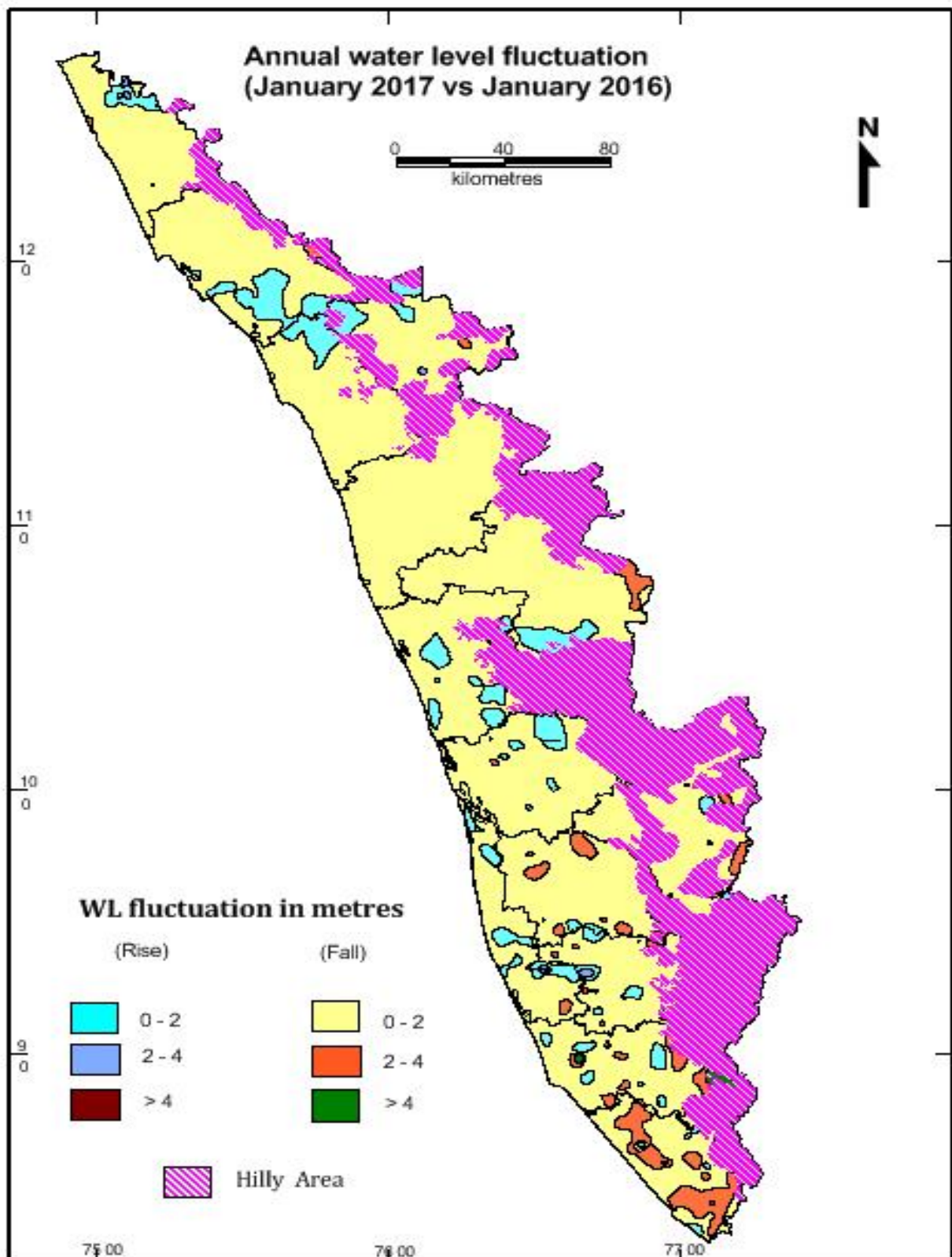
Comparison of water level data of different periods gives an insight about the recharge potential of the aquifer which in turn depends upon rainfall, physiography, climate and type of aquifer. Moreover water level fluctuation is an important parameter in Ground Water Resource Estimation. In this report annual water level fluctuation for the period January 2017 with respect to January 2016 and April 2016 and comparison with decadal mean (January 2017 vs mean of January 2007-2016) are described.

### **5.1 WATER LEVEL FLUCTUATION BETWEEN JANUARY 2017 AND JANUARY 2016**

Annual water level fluctuation has been calculated by comparing the water level data during January 2017 with January 2016. Comparison indicates that majority of the dug wells shows a fall in water level which is represented by 82.91 % of total dug wells monitored. Fall in water level fluctuation is predominant in all district and rise is observed as small patches in all districts except Malappuram. The map of Kerala showing fluctuation between January 2017 and January 2016 is given in Fig:5.1. District-wise well frequency for different ranges of water level fluctuation (January 2017 and January 2016) is given in Table 5.1

**Table 5.1 : District wise – Water Level Fluctuation and Frequency Distribution for Different Ranges  
from January 2017 – January 2016**

District	No. of Wells	Range of Fluctuation (m)				No.& Percentage of Wells /Percentage Showing Fluctuation						Total No. of Wells	
		Rise		Fall		Rise			Fall			Rise	Fall
		Min	Max	Min	Max	0 to 2	2 to 4	>4	0 to 2	2 to 4	>4		
ALAPPUZHA	75	0.01	3.26	0.02	13.68	13 17.33%	1 1.33%	0	57 76%	1 1.33%	1 1.3%	14	59
ERNAKULAM	125	0.02	1.57	0.01	2.61	18 14.40%	0	0	104 83.2%	2 1.60%	0	18	106
IDUKKI	69	0.03	0.53	0.02	5.20	7 10.14%	0	0	54 78.26%	7 10.14%	1 1.45%	7	62
KANNUR	101	0.03	3.07	0.03	14.16	23 22.77%	1 0.99%	0	67 66.34%	7 6.93%	3 2.97%	24	77
KASARGOD	111	0.01	4.15	0.02	5.22	17 15.32%	5 4.50%	1 0.90%	82 73.87%	2 1.80%	3 2.70%	23	87
KOLLAM	97	0.01	1.46	0.03	15.35	12 12.37%	0	0	67 69.07%	13 13.40%	4 4.12%	12	84
KOTTAYAM	96	0.05	1.10	0.04	5.66	6 6.25%	0	0	76 79.17%	11 11.46%	1 1.04%	6	88
KOZHIKODE	92	0.03	1.57	0.01	2.48	14 15.22%	0	0	74 80.43%	3 3.26%	0	14	77
MALAPPURAM	110	0.05	1.80	0.05	7.50	16 14.55%	0	0	75 68.18%	10 9.09%	5 4.5%	16	90
PALAKKAD	130	0.05	2.22	0.03	17.50	24 18.46%	2 1.54%	0	76 58.46%	18 13.85%	10 7.69%	26	104
PATHANAMTHITTA	87	0.02	3.80	0.02	2.79	9 10.34%	1 1.15%	0	70 80.46%	7 8.05%	0	10	77
THIRUVANANTHA PURAM	108	0.10	4.25	0.06	13.78	10 9.26%	1 0.93%	1 9.3%	56 51.85%	27 25.00%	13 12.04%	12	96
THRISSUR	119	0.01	1.90	0.01	3.65	29 24.37%	0	0	87 73.11%	2 1.68%	0	29	89
WAYANAD	67	0.03	3.64	0.01	5.09	11 16.42%	0	0	49 73.13%	4 5.97%	1 1.49%	13	54
<b>TOTAL</b>	<b>1387</b>	<b>0.10</b>	<b>0.53</b>	<b>0.01</b>	<b>17.50</b>	<b>20.9</b>	<b>2</b>	<b>2</b>	<b>994</b>	<b>114</b>	<b>42</b>	<b>224</b>	<b>1150</b>



**Fig 5.1: Annual Water Level Fluctuation (January 2017 Vs January 2016)**

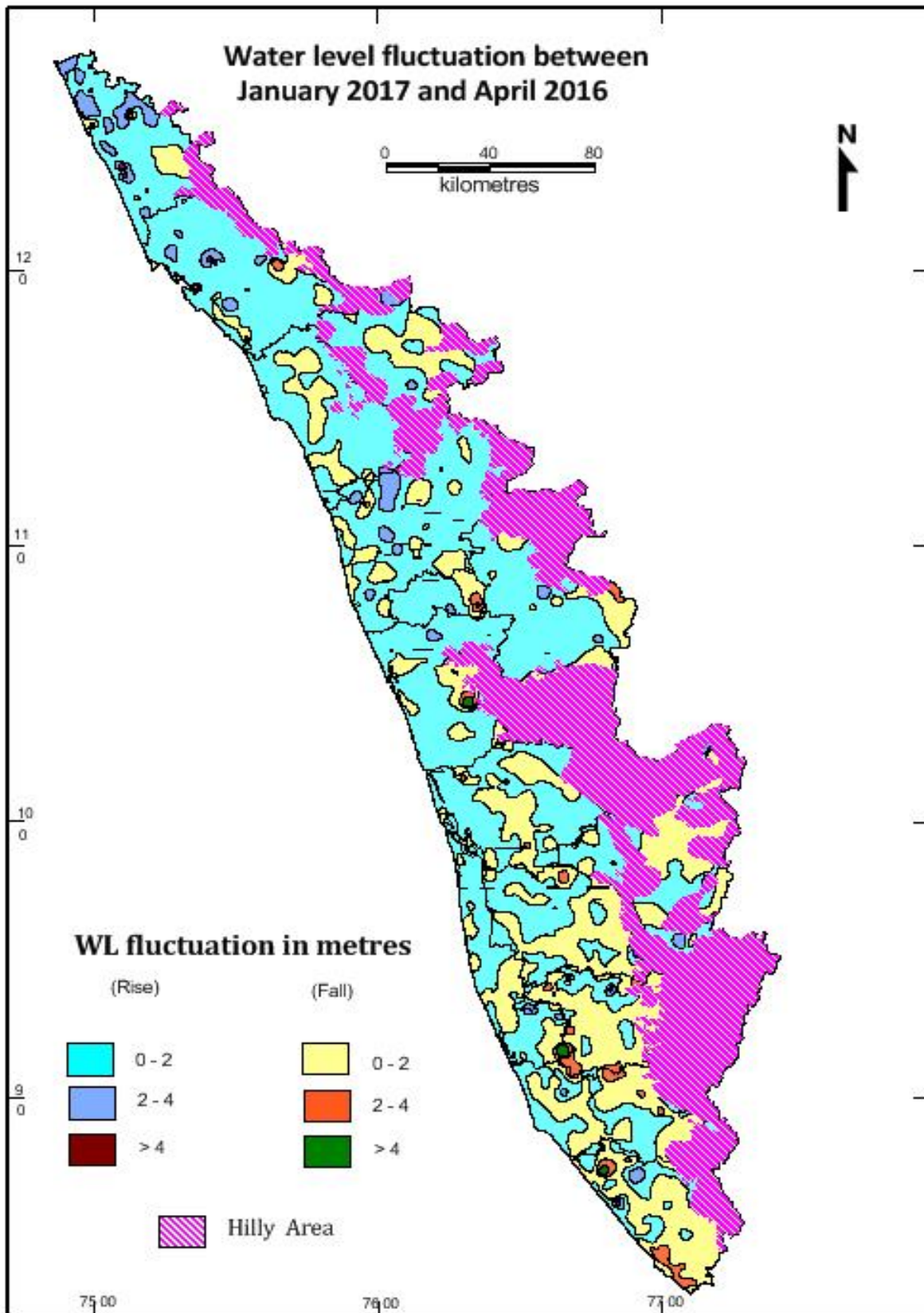
## **5.2 WATER LEVEL FLUCTUATION BETWEEN JANUARY 2017 AND APRIL 2016**

Comparison of January 2017 water level with that of April 2016 indicates rise in water level fluctuation in the range of 0 – 4 .00 metres in most parts of the State whereas fall in water level fluctuation is noticed in certain small isolated pockets mainly in Thiruvananthapuram, Kollam ,Kottayam,Pathanamthitta, Idukki,Ernakulam , Kozhikkode and Wayanad districts. In general the rise in water level is in the range of 0-2 m throughout all districts except Thiruvananthapuram and Pathanamthitta districts where fall is predominant. Rise in water level in the range of 4 m and above is noticed in isolated pockets in Kasargod and Thiruvananthapuram districts.Rise in water level is represented by 62.09 % of total monitoring wells.

The map of Kerala showing fluctuation between January 2017 and April 2016 is given in Fig:5.2. District-wise well frequency for different ranges of water level fluctuation (January 2017 and April 2016 ) is given in Table 5.2.

**Table5.2: District wise – Water Level Fluctuation and Frequency Distribution for Different Ranges  
from January 2017 – April 2016**

District	No. of Wells	Range o0.03f Fluctuation (m)0.03				No. &Percentage of Wells /Percentage Showing Fluctuation						Total No. of Wells	
		Rise0.01		Fall		Rise			Fall			Rise	Fall
		Min	Max	Min	Max	0 to 2	2 to 4	>4	0 to 2	2 to 4	>4		
ALAPPUZHA	76	0.01	3.83	0.02	13.80	39 51.32%	2 2.63%	0	27 35.53%	0	2 2.65%	41	29
ERNAKULAM	124	0.01	1.74	0.01	2.69	80 64.5%	0	0	40 32.26%	3 2.42%	0	80	43
IDUKKI	71	0.06	5.30	0.03	2.24	33 46.48%	3 4.23%	1 1.41%	31 43.66%	2 2.82%	0	37	33
KANNUR	102	0.01	31.45	0.02	6.30	71 69.91%	10 9.80%	2 1.98%	14 13.73%	3 2.94%	2 1.96%	83	19
KASARGOD	112	0.05	9.17	0.08	7.55	67 59.82%	28 25%	6 5.36%	7 6.25%	2 1.79%	2 1.79%	101	11
KOLLAM	99	0.01	3.52	0.02	16.75	47 47.47%	5 5.05%	0	38 38.38%	6 6.06%	1 1.01%	52	45
KOTTAYAM	98	0.02	3.09	0.03	2.94	47 47.9%	4 4.08%	0	39 39.80%	2 2.04%	0	51	41
KOZHIKODE	92	0.02	2.23	0.01	1.96	69 75%	1 1.09%	0	21 22.83%	0	0	70	21
MALAPPURAM	95	0.02	7.07	0.06	2.49	56 58.9%	10 10.53%	1 1.05%	25 26.32%	2 2.11%	0	67	27
PALAKKAD	120	0.01	18.90	0.01	11.25	79 65.83%	3 2.50%	3 2.50%	28 23.33%	3 2.50%	2 1.67%	85	33
PATHANAMTHITTA	86	0.02	4.50	0.05	4	26 30.23%	1 1.16%	2 2.33%	43 50%	4 4.65%	0	29	47
THIRUVANANTHAPURAM	103	0.01	4.51	0.03	12.58	29 28.16%	2 1.94%	1 0.97%	55 53.40%	12 11.65%	3.2.93 %	32	70
THRISSUR	118	0.02	2.49	0.01	5.50	80 67.80%	2 1.69%	0	28 23.73%	2 1.69%	1 0.85%	82	31
WAYANAD	68	0.02	8.12	0.02	1.86	32 47.06%	4 5.88%	1 1.47%	30 44.12%	0	0	37	30
<b>TOTAL</b>	<b>1364</b>	<b>0.06</b>	<b>1.74</b>	<b>0.01</b>	<b>16.75</b>	<b>755</b>	<b>75</b>	<b>17</b>	<b>426</b>	<b>41</b>	<b>13</b>	<b>847</b>	<b>480</b>



**Fig 5.2: Water Level Fluctuation (January 2017 Vs April 2016)**

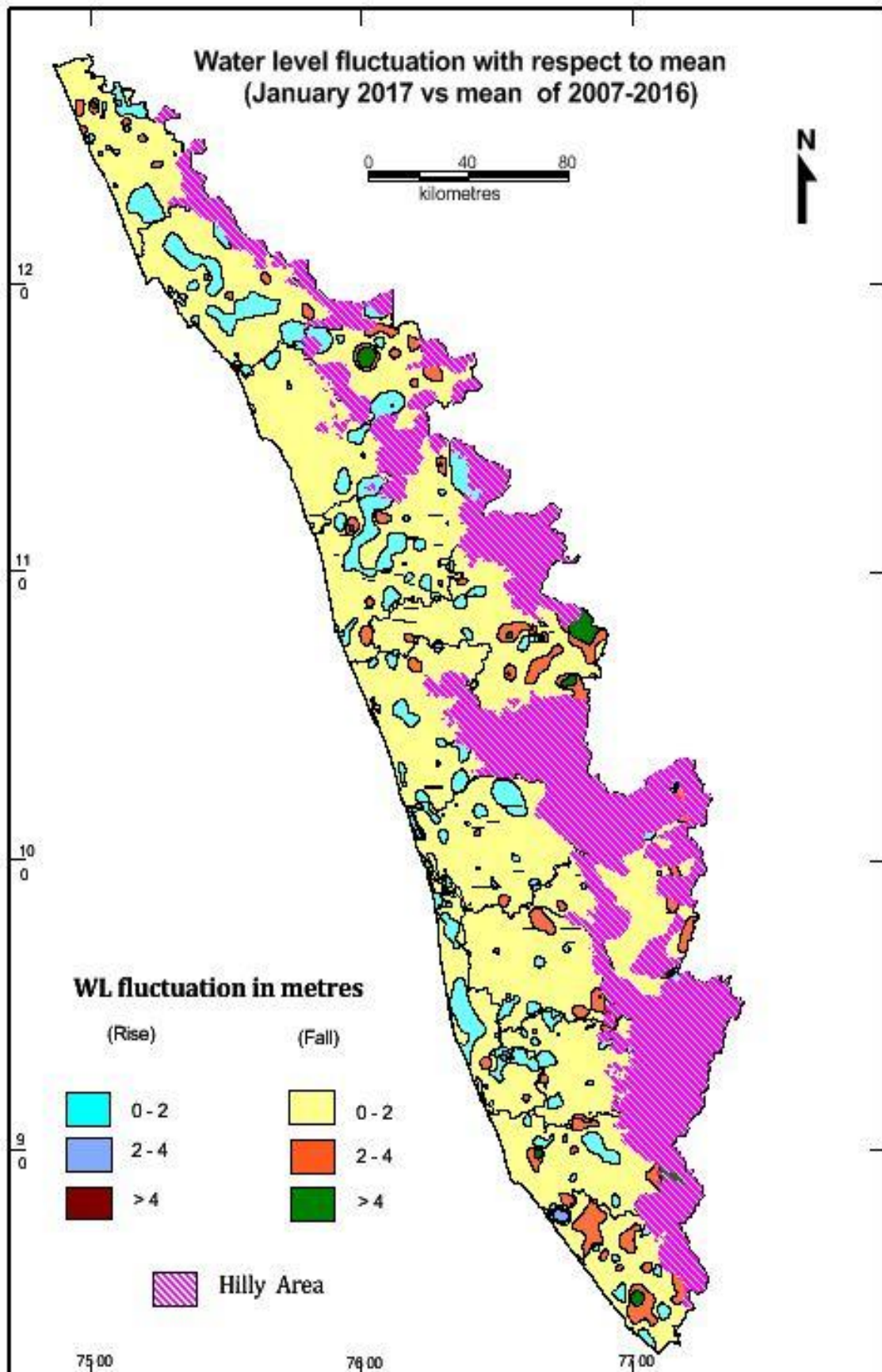
### **5.3 WATER LEVEL FLUCTUATION BETWEEN DECADAL MEAN(JANUARY WATER LEVEL OF THE PERIOD 2007 – 2016) AND JANUARY 2017**

The change in water level over the last ten years period is brought out by the comparison of water level with the mean value of January measurements of the period 2007-2016. This analysis indicates that the change in water level is mostly restricted to +2(rise) to -2(fall) m as recorded by 88.03 % of GWMW. However fall in water level is predominant in all districts as represented by 81.45 % of monitoring wells. Rise in water level is observed as isolated patches in all districts. The frequency of wells showing rise and fall in different ranges (0-2m, 2-4m, 4m ) when compared with decade mean water level is given in Table 5.3. Figure 5.3 shows the water level fluctuation in the state for January 2017 with respect to Decadal mean (2007-2016).

**Table 5.3: District wise – Water Level Fluctuation with Mean and January 2017 (January 2017 – Mean (January 2007-2016))**

District	No. of Wells	Range of Fluctuation (m)				No. & Percentage of Wells / Percentage Showing Fluctuation						Total No. of Wells	
		Rise		Fall		Rise			Fall			Rise	Fall
		Min	Max	Min	Max	0 to 2	2 to 4	>4	0 to 2	2 to 4	>4		
ALAPPUZHA	83	0.03	3.50	0.02	5.78	24 28.92%	1 1.20%	0	54 65.06%	3 3.61%	1 1.20%	25	58
ERNAKULAM	128	0.00	1.56		3.49	26 20.31%	0	0	98 76.56%	4 3.13%	0	26	102
IDUKKI	71	0.03	3.27	0.09	5.20	8 11.27%	1 1.41%	0	51 71.83%	10 14.08%	1 1.41%	9	62
KANNUR	106	0.02	1.87		14.16	32 30.19%	0	0	65 61.32%	6 5.66%	3 2.83%	32	74
KASARGOD	117	0	7.19	0.01	6.01	22 18.80%	1 0.85%	2 1.71%	82 70.09%	7 5.98%	2 1.71%	25	91
KOLLAM	110	0.03	1.32	0.07	7.06	12 10.91%	0	0	81 73.64%	15 13.64%	2 1.82%	12	98
KOTTAYAM	99	0.05	1.02	0.03	4.04	13 13.13%	0	0	79 79.80%	6 6.06%	1 1.01%	13	86
KOZHIKODE	93	0.01	1.37	0.01	2.11	10 10.75%	0	0	82 88.17%	1 1.08%	0	10	83
MALAPPURAM	115	0.01	1.97	0.0	27.16	30 26.09%	0	0	68 59.13%	10 8.70%	6 5.22%	30	84
PALAKKAD	135	0.01	1.91	0.04	17.50	15 11.11%	0	0	84 62.22%	23 17.04%	13 9.63%	15	120
PATHANAMTHITTA	87	0.01	1.22	0.0	3.69	18 20.69%	0	0	66 75.86%	3 3.45%	0	18	69
THIRUVANANTHA PURAM	114	0.03	3.89	0.01	6.68	18 15.79%	1 0.88%	0	64 56.14%	28 24.56%	3 2.63%	19	95
THRISSUR	119	0	1.73	0	3.89	22 18.49%	0	0	92 77.31%	5 4.20%	0	22	97
WAYANAD	68	0.06	3.48	0.10	7.25	811.76 %	2 2.94%	0	48 70.59%	9 13.24%	1 1.47%	10	58
<b>TOTAL</b>	<b>1445</b>	<b>1.02</b>	<b>0.06</b>	<b>0</b>	<b>27.16</b>	<b>258</b>	<b>6</b>	<b>2</b>	<b>1014</b>	<b>130</b>	<b>33</b>	<b>266</b>	<b>1177</b>





**Fig.5.3 Water level fluctuation with respect to Mean  
(January 2015Vs mean ( January 2007-2016))**

## Annexure I

### Station-wise Ground Water Level Data- Kerala State - January 2017

SINo	DISTRICT_NAME	SITE_NAME	SITE_TYPE	WL(m bgl)
1	ALAPPUZHA	Charummoodu	Dug Well	20.15
2	ALAPPUZHA	Kayamkulam	Dug Well	0.8
3	ALAPPUZHA	Vallikunnam	Dug Well	2.3
4	ALAPPUZHA	Thamarakulam	Dug Well	4.05
5	ALAPPUZHA	Kuzhamathu	Dug Well	12.85
6	ALAPPUZHA	Adikattukulangara	Dug Well	5.4
7	ALAPPUZHA	Pallarimangalam	Dug Well	1.95
8	ALAPPUZHA	Kandiyur (R1)	Dug Well	3.5
9	ALAPPUZHA	Thevery	Dug Well	1.9
10	ALAPPUZHA	Nangiarkulangara	Dug Well	1.9
11	ALAPPUZHA	Haripad(s)	Tube Well	10.7
12	ALAPPUZHA	Haripad(e)	Tube Well	10.28
13	ALAPPUZHA	Haripad	Dug Well	2.62
14	ALAPPUZHA	Karthikapally(south)	Tube Well	4.9
15	ALAPPUZHA	Kalissery	Dug Well	4.35
16	ALAPPUZHA	Chettikulangara Pz	Tube Well	1.9
17	ALAPPUZHA	Mavelikara	Dug Well	3.04
18	ALAPPUZHA	Mannar	Dug Well	4.45
19	ALAPPUZHA	Purakkad (R1)	Dug Well	2.51
20	ALAPPUZHA	Naduvattom	Dug Well	2.13
21	ALAPPUZHA	Mannar	Tube Well	5.62
22	ALAPPUZHA	Pandanad	Dug Well	2.9
23	ALAPPUZHA	Parumala (R1)	Dug Well	2.7
24	ALAPPUZHA	Chengannur	Dug Well	7.45
25	ALAPPUZHA	Mulakuzha1	Dug Well	4.35
26	ALAPPUZHA	Kadaikadu (Cheriyanaad )	Dug Well	4.7
27	ALAPPUZHA	Haripad(c)	Tube Well	11.15
28	ALAPPUZHA	Kalarkode(s)	Tube Well	1.8
29	ALAPPUZHA	Kalarkode(e)	Tube Well	3.15
30	ALAPPUZHA	Kalarkode(w)	Tube Well	21.2
31	ALAPPUZHA	Vandanam	Dug Well	2.6
32	ALAPPUZHA	Neerkunnam(R1)	Dug Well	1.9
33	ALAPPUZHA	Muttar	Dug Well	1.4
34	ALAPPUZHA	Ambalapuzha	Dug Well	1.95
35	ALAPPUZHA	Karumady	Tube Well	2.01
36	ALAPPUZHA	Thottapally	Dug Well	0.9
37	ALAPPUZHA	Mancombu	Dug Well	1.45
38	ALAPPUZHA	Karumancherry	Dug Well	1.15
39	ALAPPUZHA	Arur	Dug Well	1.6
40	ALAPPUZHA	Pattanakad	Dug Well	1.35
41	ALAPPUZHA	Arukutti	Dug Well	2.02

42	ALAPPUZHA	Thaikattusseri (R1)	Dug Well	1.45
43	ALAPPUZHA	Kalavamkodam	Dug Well	1.9
44	ALAPPUZHA	Panavalley	Dug Well	1.6
45	ALAPPUZHA	Cherthalai	Dug Well	0.75
46	ALAPPUZHA	Muthukulam Pz	Tube Well	0.95
47	ALAPPUZHA	Chelakkad	Dug Well	1.1
48	ALAPPUZHA	Pathiyur (R1)	Dug Well	1.32
49	ALAPPUZHA	Kuttitheruvu (Kayamkulam)	Dug Well	2.8
50	ALAPPUZHA	Krishnapuram(s)	Tube Well	16
51	ALAPPUZHA	Muthukulam	Dug Well	1.9
52	ALAPPUZHA	Muttam(south)	Tube Well	4.92
53	ALAPPUZHA	Panurkara	Dug Well	0.9
54	ALAPPUZHA	Krishnapuram(n)	Tube Well	6.6
55	ALAPPUZHA	Oachira1 (Krishnapuram) (R1)	Dug Well	3.5
56	ALAPPUZHA	Eramallur	Dug Well	1.75
57	ALAPPUZHA	Chandirur (R1)	Dug Well	2.04
58	ALAPPUZHA	Ezhupunna	Tube Well	1.7
59	ALAPPUZHA	Cheruvaranam	Dug Well	2.3
60	ALAPPUZHA	Vanaswargam	Dug Well	1.75
61	ALAPPUZHA	Thaneermukkam	Dug Well	1.1
62	ALAPPUZHA	Kanichukulangara	Dug Well	2.3
63	ALAPPUZHA	Thuravur	Dug Well	2.5
64	ALAPPUZHA	Valavanad	Dug Well	1.25
65	ALAPPUZHA	Kayippuram (Muhamma)	Dug Well	2.15
66	ALAPPUZHA	Mannanchery	Dug Well	2.25
67	ALAPPUZHA	Preethigulangara-centre	Tube Well	2.54
68	ALAPPUZHA	Kokkothamangalam	Dug Well	2.5
69	ALAPPUZHA	Kattoor (R1)	Dug Well	1.45
70	ALAPPUZHA	Edathua(R2)	Dug Well	1.1
71	ALAPPUZHA	Thalavadi (R1)	Dug Well	1.95
72	ALAPPUZHA	Nedumudi (pupalli)	Dug Well	0.3
73	ALAPPUZHA	Pacha (R3)	Dug Well	1.36
74	ALAPPUZHA	Kunnamkari	Dug Well	1.7
75	ALAPPUZHA	Ramankari (R1)	Dug Well	0.88
76	ALAPPUZHA	Champakulam	Dug Well	0.94
77	ALAPPUZHA	Alleppey	Dug Well	2.01
78	ALAPPUZHA	Thakazhi	Dug Well	0.95
79	ALAPPUZHA	Kalavur	Dug Well	1.3
80	ALAPPUZHA	Thyckal Beach	Dug Well	1.17
81	ALAPPUZHA	Alapuzha Town	Dug Well	3.7
82	ALAPPUZHA	Kaidavana-R1	Dug Well	0.95
83	ALAPPUZHA	Muttam	Dug Well	2.2
84	ALAPPUZHA	Chettikulangara	Dug Well	1.75
85	ALAPPUZHA	Kudassanad	Dug Well	6.05
86	ALAPPUZHA	Kattanam	Dug Well	12.45

87	ALAPPUZHA	Idakunnam	Dug Well	13.7
88	ALAPPUZHA	Kattanam1	Tube Well	12.3
89	ALAPPUZHA	Nooranad	Dug Well	10.2
90	ERNAKULAM	Okkal	Dug Well	4.17
91	ERNAKULAM	Arakuzha Pz	Bore Well	5.4
92	ERNAKULAM	Pezhakkapallil	Dug Well	4.96
93	ERNAKULAM	East Marady	Dug Well	6.22
94	ERNAKULAM	Vazhakam Pz	Bore Well	5.27
95	ERNAKULAM	Randar	Dug Well	5.49
96	ERNAKULAM	Vazhappilly	Dug Well	1.95
97	ERNAKULAM	Kothamangalam (R3)	Dug Well	4.4
98	ERNAKULAM	Paingottur	Dug Well	5.5
99	ERNAKULAM	Palakuzha North	Dug Well	6.64
100	ERNAKULAM	Trikkakara	Dug Well	9.95
101	ERNAKULAM	Pattimattom (R2)	Dug Well	6.17
102	ERNAKULAM	Poothrikka	Dug Well	8.82
103	ERNAKULAM	Aikaranad	Dug Well	6.68
104	ERNAKULAM	Aikaranad1	Bore Well	4.5
105	ERNAKULAM	Mannur	Dug Well	4.72
106	ERNAKULAM	Vadavucode (Kolencherry)	Dug Well	2.45
107	ERNAKULAM	Poothrikka Pz	Bore Well	10.25
108	ERNAKULAM	Edapally	Dug Well	1.85
109	ERNAKULAM	Kizhakombu	Dug Well	5.95
110	ERNAKULAM	Njarakkal	Dug Well	1
111	ERNAKULAM	Kadavanthara	Tube Well	6.45
112	ERNAKULAM	Eranakulam South	Dug Well	0.88
113	ERNAKULAM	Kanjiramattom	Dug Well	7.1
114	ERNAKULAM	Namakuzhi	Dug Well	6.98
115	ERNAKULAM	Kallorkad	Dug Well	2.89
116	ERNAKULAM	Pallikara-Chittanadu	Dug Well	7.78
117	ERNAKULAM	Muvattupuzha	Dug Well	7.25
118	ERNAKULAM	Veliyanad	Bore Well	4.05
119	ERNAKULAM	Edakkatuvayal	Dug Well	11.81
120	ERNAKULAM	Irumbanam2	Bore Well	2.93
121	ERNAKULAM	Mulanthuruthi	Dug Well	10.21
122	ERNAKULAM	Edakkattuvoyal PZ	Bore Well	10.3
123	ERNAKULAM	Namakuzhi	Bore Well	11.54
124	ERNAKULAM	Arakunnam	Dug Well	11.39
125	ERNAKULAM	Poothotta	Dug Well	2.83
126	ERNAKULAM	Kizhakombu	Bore Well	5.94
127	ERNAKULAM	Veliyanad	Dug Well	7.42
128	ERNAKULAM	Kanjiramattom	Bore Well	14.3
129	ERNAKULAM	Tripunithura	Dug Well	3.19
130	ERNAKULAM	Irumbanam (R1)	Dug Well	2.59
131	ERNAKULAM	Udayamperoor	Dug Well	3.88

132	ERNAKULAM	Perumbadavam	Dug Well	6.74
133	ERNAKULAM	Ramamangalam	Dug Well	6.65
134	ERNAKULAM	Pambakuda	Dug Well	6.74
135	ERNAKULAM	Thirumaradi	Bore Well	4.67
136	ERNAKULAM	Koothattukulam (R1)	Dug Well	4.3
137	ERNAKULAM	Mamala	Dug Well	4.92
138	ERNAKULAM	Kottapuram (Veliyanad)	Dug Well	6.7
139	ERNAKULAM	Piravom	Dug Well	6.3
140	ERNAKULAM	Thirumaradi	Dug Well	5.56
141	ERNAKULAM	Anchalpetty-R1	Dug Well	6.09
142	ERNAKULAM	Mamallassery (R1)	Dug Well	5.85
143	ERNAKULAM	Ilanji	Dug Well	7.59
144	ERNAKULAM	Koovappady	Bore Well	6.15
145	ERNAKULAM	Kodanad	Dug Well	5.84
146	ERNAKULAM	Keezhillam	Dug Well	7.2
147	ERNAKULAM	Koovapady	Dug Well	6.58
148	ERNAKULAM	Kuruppampady	Dug Well	6.57
149	ERNAKULAM	Payyal	Dug Well	4.29
150	ERNAKULAM	Malayattur	Dug Well	7.42
151	ERNAKULAM	Malayattur1	Bore Well	8.9
152	ERNAKULAM	Kadavoor	Dug Well	5.95
153	ERNAKULAM	Pindimana	Dug Well	3.7
154	ERNAKULAM	Thattkad (R1)	Dug Well	2.73
155	ERNAKULAM	Kottapadi	Dug Well	3.97
156	ERNAKULAM	Thalakode	Dug Well	4.05
157	ERNAKULAM	Karukadam	Dug Well	4.96
158	ERNAKULAM	Neriyamangalam (R1)	Dug Well	8.27
159	ERNAKULAM	Pothanikad (R2)	Dug Well	4.8
160	ERNAKULAM	Punnakad1	Dug Well	1.61
161	ERNAKULAM	Kanjur	Dug Well	7.42
162	ERNAKULAM	Illithode 1	Dug Well	5.98
163	ERNAKULAM	Karukutti (R2)	Dug Well	9.6
164	ERNAKULAM	Chalokka	Dug Well	2.24
165	ERNAKULAM	Chengamanad	Dug Well	9.94
166	ERNAKULAM	Kodussery	Bore Well	7.92
167	ERNAKULAM	Kodussery (R1)	Dug Well	8.45
168	ERNAKULAM	Kunnukara	Dug Well	9.5
169	ERNAKULAM	Mallussery	Dug Well	4.96
170	ERNAKULAM	Peechanikad (R1)	Dug Well	6.77
171	ERNAKULAM	Chulli (R1)	Dug Well	5.05
172	ERNAKULAM	Manjapra	Dug Well	5.67
173	ERNAKULAM	Attara	Dug Well	7.14
174	ERNAKULAM	Thabore	Dug Well	7.16
175	ERNAKULAM	Parakkadavu	Dug Well	2.91
176	ERNAKULAM	Kurumassery	Dug Well	8.51

177	ERNAKULAM	Angamali (R1)	Dug Well	7.56
178	ERNAKULAM	North Parur	Dug Well	0.88
179	ERNAKULAM	Paravur	Dug Well	2.48
180	ERNAKULAM	Edavanakad	Dug Well	0.3
181	ERNAKULAM	Nayarambalam	Dug Well	1.4
182	ERNAKULAM	Malipuram	Dug Well	0.96
183	ERNAKULAM	Munambam (R1)	Dug Well	1.11
184	ERNAKULAM	Vypeen	Dug Well	0.5
185	ERNAKULAM	Kadungallur	Dug Well	2.72
186	ERNAKULAM	Kottapuram (Alangadu)	Dug Well	2.39
187	ERNAKULAM	Elur North (R1)	Dug Well	1.68
188	ERNAKULAM	Varapuzha	Dug Well	1.91
189	ERNAKULAM	Thaikkattukara	Dug Well	2.9
190	ERNAKULAM	Alwaye	Dug Well	13.55
191	ERNAKULAM	Pulluvazhi	Dug Well	5.71
192	ERNAKULAM	Mullankunnu	Dug Well	10.32
193	ERNAKULAM	Mullankunnu	Bore Well	17.4
194	ERNAKULAM	Perumbavoor (R2)	Dug Well	6.12
195	ERNAKULAM	Valayanchirangara	Dug Well	8.68
196	ERNAKULAM	Kalur	Dug Well	6.46
197	ERNAKULAM	Valakam	Dug Well	6.51
198	ERNAKULAM	Anicadu	Dug Well	2.73
199	ERNAKULAM	Thrikalathur	Dug Well	5.27
200	ERNAKULAM	Arakuzha	Dug Well	6.59
201	ERNAKULAM	Sreemoolanagaram	Dug Well	9.71
202	ERNAKULAM	Illithode	Bore Well	6.22
203	ERNAKULAM	Chowara (R1)	Dug Well	6.48
204	ERNAKULAM	Vazhakkulam North	Dug Well	6.8
205	ERNAKULAM	Kalady (R1)	Dug Well	3.34
206	ERNAKULAM	Kumbalangi (R2)	Dug Well	1.43
207	ERNAKULAM	Kandakadavu	Dug Well	1.09
208	ERNAKULAM	Cheria Kadavu	Dug Well	0.71
209	ERNAKULAM	Chellanum	Dug Well	1.18
210	ERNAKULAM	Punithura	Dug Well	1.62
211	ERNAKULAM	Maradu	Dug Well	1.03
212	ERNAKULAM	Vytila	Dug Well	2.48
213	ERNAKULAM	Kundannur (R1)	Dug Well	0.68
214	ERNAKULAM	Kizhakkambalam	Dug Well	7.24
215	ERNAKULAM	Thuruthi	Dug Well	3.91
216	ERNAKULAM	Nallimolam (R1)	Dug Well	7.18
217	ERNAKULAM	Cherukadapuram	Dug Well	1.99
218	ERNAKULAM	Kapparassery	Dug Well	2.24
219	ERNAKULAM	Nellikuzhi	Dug Well	3.7
220	ERNAKULAM	Keerampara	Dug Well	2.82
221	ERNAKULAM	Kuthukuzhi	Dug Well	4.85

222	ERNAKULAM	Oonnukal	Dug Well	6.54
223	ERNAKULAM	Puthankurissu (Neriyamangalam Road)	Dug Well	3.79
224	ERNAKULAM	Vallom (R2)	Dug Well	7.23
225	IDUKKI	Elamdesom	Dug Well	6.63
226	IDUKKI	Kodikulam east	Dug Well	5.5
227	IDUKKI	Udumbannur	Dug Well	6.29
228	IDUKKI	Pannimattom	Dug Well	3.93
229	IDUKKI	Cheenikuzhi	Dug Well	2.4
230	IDUKKI	Karumannur	Bore Well	4.38
231	IDUKKI	Kolapra	Dug Well	4.93
232	IDUKKI	Mundiyeeruma	Dug Well	5.1
233	IDUKKI	Alakkode1	Dug Well	4.64
234	IDUKKI	Nedumkandam	Dug Well	4.99
235	IDUKKI	Pambadumpara	Dug Well	3.29
236	IDUKKI	Cumbummettu	Dug Well	6.85
237	IDUKKI	Poopara	Dug Well	3.4
238	IDUKKI	Mundieruma	Bore Well	4.62
239	IDUKKI	Chathurangapara	Dug Well	0.1
240	IDUKKI	Murikkassery	Dug Well	11.81
241	IDUKKI	Udumbanchola	Dug Well	9.45
242	IDUKKI	Thumbachi	Dug Well	4.19
243	IDUKKI	Thankamoni	Bore Well	2.82
244	IDUKKI	Moolamattam	Dug Well	5.84
245	IDUKKI	Thankamani	Dug Well	2.44
246	IDUKKI	Kulamavu	Dug Well	7.36
247	IDUKKI	Idukki	Dug Well	3.98
248	IDUKKI	Manjappara	Dug Well	1.96
249	IDUKKI	Thodupuzha	Dug Well	10.46
250	IDUKKI	Kolani	Dug Well	3.43
251	IDUKKI	Anavilasam	Dug Well	6.89
252	IDUKKI	Kochera	Dug Well	4.8
253	IDUKKI	Kanchiyar	Dug Well	9.86
254	IDUKKI	Memala	Dug Well	6.1
255	IDUKKI	Nirmala City	Dug Well	2.44
256	IDUKKI	Irattayar (R1)	Dug Well	2.92
257	IDUKKI	Kattappana	Bore Well	10.32
258	IDUKKI	Marykulam	Dug Well	4.71
259	IDUKKI	Vellilamkandam	Dug Well	5.98
260	IDUKKI	Anakkara	Dug Well	8
261	IDUKKI	Vandanmedu (R1)	Dug Well	3.52
262	IDUKKI	Kattapana	Dug Well	2.8
263	IDUKKI	Churuli	Dug Well	2.74
264	IDUKKI	Karimkunnam (R1)	Dug Well	3.52
265	IDUKKI	Arikuzha	Dug Well	4.23

266	IDUKKI	Karimkunnam2	Bore Well	3.32
267	IDUKKI	Perumuttom	Dug Well	6.72
268	IDUKKI	Kumaramangalam	Dug Well	4.5
269	IDUKKI	Alakode	Bore Well	4.33
270	IDUKKI	Vazhithala	Dug Well	4.76
271	IDUKKI	Chittoor	Dug Well	4.1
272	IDUKKI	Karumanoor	Dug Well	4.47
273	IDUKKI	Kaliyar	Dug Well	5.51
274	IDUKKI	Machiplavu	Dug Well	8.62
275	IDUKKI	Adimali	Dug Well	6.39
276	IDUKKI	Valara (R2)	Dug Well	9.4
277	IDUKKI	Rajakkad	Dug Well	9.97
278	IDUKKI	Byson Valley	Dug Well	11.56
279	IDUKKI	Devikulam	Dug Well	3.44
280	IDUKKI	Balagram ( Third camp)	Dug Well	5.06
281	IDUKKI	Munnar	Dug Well	1.46
282	IDUKKI	Cheriyar	Dug Well	3.14
283	IDUKKI	Ambazhachal	Dug Well	4.67
284	IDUKKI	Rajakumary	Dug Well	13.65
285	IDUKKI	Peerumedu	Dug Well	3.17
286	IDUKKI	Pampanar	Dug Well	1.64
287	IDUKKI	Murukkady	Dug Well	7.2
288	IDUKKI	Vallakadavu	Dug Well	4.77
289	IDUKKI	Elappara	Dug Well	1.72
290	IDUKKI	Kumili	Dug Well	2.67
291	IDUKKI	Carady Goody Estate	Dug Well	2.59
292	IDUKKI	Peruvanthanam	Dug Well	2
293	IDUKKI	Vandiperiyar	Dug Well	7.44
294	IDUKKI	Kuttikanam (R1)	Dug Well	6.9
295	KANNUR	Pannoor	Dug Well	5.75
296	KANNUR	Mahe (R1)	Dug Well	1.77
297	KANNUR	Melepukkom	Dug Well	8.45
298	KANNUR	Palloor (Mahe)	Dug Well	9.5
299	KANNUR	Panoor	Bore Well	5
300	KANNUR	Pallikkuni	Dug Well	3.17
301	KANNUR	Mekunnu	Dug Well	6.2
302	KANNUR	Dharmadam	Dug Well	2.88
303	KANNUR	Ulikkal (R1)	Dug Well	5.8
304	KANNUR	Vattiyamthodu	Dug Well	6.65
305	KANNUR	Sreekandapuram	Dug Well	8.1
306	KANNUR	Anthoor	Bore Well	13.1
307	KANNUR	Kommeri	Dug Well	3.53
308	KANNUR	Mattanur	Dug Well	7.95
309	KANNUR	Kuppan	Dug Well	2.1
310	KANNUR	Taliparamba	Dug Well	12.1



311	KANNUR	Parassinikadavu DW	Dug Well	14.3
312	KANNUR	Parassinikadavu	Bore Well	21.45
313	KANNUR	Kizhpalli	Dug Well	6.6
314	KANNUR	Muzhakunnu	Dug Well	4.55
315	KANNUR	Elambara	Dug Well	4.15
316	KANNUR	Vengad	Dug Well	14.2
317	KANNUR	Meruvambayi	Dug Well	6.1
318	KANNUR	Pattiyam	Dug Well	2.55
319	KANNUR	Mokeri	Dug Well	8.52
320	KANNUR	Kannur-Thana	Dug Well	9.9
321	KANNUR	Mele Chovva	Dug Well	7.2
322	KANNUR	Nellunni	Dug Well	4.4
323	KANNUR	Thalassery	Dug Well	5.39
324	KANNUR	Kannavam	Dug Well	5.4
325	KANNUR	Melur	Dug Well	4.15
326	KANNUR	Pinarayi	Dug Well	14.05
327	KANNUR	Kanhirangad	Dug Well	11.05
328	KANNUR	Pariyaram	Dug Well	13.4
329	KANNUR	Kannapuram	Dug Well	2.7
330	KANNUR	Kolachery	Dug Well	9.8
331	KANNUR	Valapattanam	Dug Well	10
332	KANNUR	Chavassery	Dug Well	3.95
333	KANNUR	Nayattupara	Dug Well	12.4
334	KANNUR	Cheleri	Dug Well	12.73
335	KANNUR	Mayyil	Dug Well	10.39
336	KANNUR	Kankole1	Bore Well	9
337	KANNUR	Vayyakara	Dug Well	19.85
338	KANNUR	Chural	Dug Well	6.95
339	KANNUR	Mathil	Dug Well	10.7
340	KANNUR	Mathamangalam (R1)	Dug Well	5.4
341	KANNUR	Cherupuzha	Dug Well	5.1
342	KANNUR	Ettikkulam	Dug Well	10.8
343	KANNUR	Neruvambram	Dug Well	15.9
344	KANNUR	Cheruthazam	Dug Well	9.35
345	KANNUR	Chepparapadavu	Dug Well	4.3
346	KANNUR	Echilamvayal	Dug Well	4.9
347	KANNUR	Oduvalli	Dug Well	17.1
348	KANNUR	Andoor	Dug Well	7.05
349	KANNUR	Panunda	Dug Well	12.48
350	KANNUR	Kottayampoil	Dug Well	8.2
351	KANNUR	Cannanore1	Tube Well	12.3
352	KANNUR	Kannur	Dug Well	8.9
353	KANNUR	Chalad	Dug Well	6.85
354	KANNUR	Munderi	Bore Well	4.8
355	KANNUR	Alavil	Dug Well	7.15

356	KANNUR	Puthiyatheru	Dug Well	7
357	KANNUR	Chakkarakkale	Dug Well	9.15
358	KANNUR	Kizhallur	Bore Well	4.8
359	KANNUR	Munderi	Dug Well	7.5
360	KANNUR	Varam	Dug Well	5.7
361	KANNUR	Edakkad	Dug Well	2.31
362	KANNUR	ThazheChovva	Dug Well	1.5
363	KANNUR	Anjarakandi	Dug Well	7.98
364	KANNUR	Chala	Dug Well	11.5
365	KANNUR	Palleri	Dug Well	8.3
366	KANNUR	Ambilad	Dug Well	13.31
367	KANNUR	Pathiriyad	Dug Well	8.7
368	KANNUR	Koothuparamba	Dug Well	10.2
369	KANNUR	Manantheri	Dug Well	7.8
370	KANNUR	Kommery	Bore Well	3.25
371	KANNUR	Kottayampoyil	Bore Well	12.05
372	KANNUR	Kelakam	Dug Well	12.4
373	KANNUR	Kakkeyamkadu	Bore Well	3.86
374	KANNUR	Manathana	Bore Well	6.55
375	KANNUR	Manattana	Dug Well	3.35
376	KANNUR	Peravoor	Dug Well	5
377	KANNUR	Kolayad	Dug Well	7.61
378	KANNUR	Kolakkad	Dug Well	9.73
379	KANNUR	Kottiyur	Dug Well	7.28
380	KANNUR	Edoor	Dug Well	4.4
381	KANNUR	Karikottakari	Dug Well	10.7
382	KANNUR	Kunnoth	Dug Well	6.6
383	KANNUR	Kallumutty	Dug Well	6.85
384	KANNUR	Iritty-R1	Dug Well	-0.8
385	KANNUR	Irikkur	Dug Well	6.06
386	KANNUR	Edayannur	Dug Well	4.9
387	KANNUR	Aralam	Dug Well	-0.7
388	KANNUR	Kolacheri	Bore Well	8.5
389	KANNUR	Pazhayangadi	Dug Well	2
390	KANNUR	Karumathur	Bore Well	8.5
391	KANNUR	Nuchiyad	Dug Well	8.31
392	KANNUR	Chundaparambu	Dug Well	6.85
393	KANNUR	Koottummukham	Dug Well	5.77
394	KANNUR	Kakkathodu	Dug Well	3.5
395	KANNUR	Valakkai	Dug Well	4.25
396	KANNUR	Pappinissery West	Dug Well	2.05
397	KANNUR	Kalliassery	Dug Well	8.05
398	KANNUR	Pattuvam	Dug Well	15.71
399	KANNUR	Pukkundu	Dug Well	13.4
400	KANNUR	Alacode (R1)	Dug Well	10.8

401	KANNUR	Oduvallithattu	Bore Well	12.83
402	KANNUR	Kadannapally	Dug Well	11.35
403	KANNUR	Kotty	Dug Well	2.9
404	KANNUR	Pulingome	Dug Well	6.4
405	KANNUR	Peringome ( R1)	Dug Well	8.05
406	KANNUR	Kozhichal	Dug Well	5.9
407	KANNUR	Ezhilode	Dug Well	13.7
408	KANNUR	Ramantalai	Dug Well	9.38
409	KANNUR	Kunnaru	Dug Well	2.4
410	KANNUR	Payyannur	Dug Well	5.05
411	KANNUR	Pulingome1	Bore Well	8.55
412	KASARAGOD	Arladuka	Dug Well	15.1
413	KASARAGOD	Melparamba	Dug Well	14.1
414	KASARAGOD	Kadappallam	Dug Well	15.4
415	KASARAGOD	Chattanchal DW	Dug Well	14.1
416	KASARAGOD	Munnad	Dug Well	10.25
417	KASARAGOD	Poinachi-R1	Dug Well	13.7
418	KASARAGOD	Bedadka-R1	Dug Well	12.8
419	KASARAGOD	Bela (R1)	Dug Well	10.7
420	KASARAGOD	Pachakkad CPCRI	Bore Well	14.05
421	KASARAGOD	Kudlu	Dug Well	9.9
422	KASARAGOD	Cherkala	Bore Well	12.28
423	KASARAGOD	Sasthangode (Sastha Nagar)	Dug Well	21.6
424	KASARAGOD	Cherkala	Dug Well	10.1
425	KASARAGOD	Povval	Dug Well	12.8
426	KASARAGOD	Bovikkanam	Bore Well	13.1
427	KASARAGOD	Madhur	Bore Well	8.25
428	KASARAGOD	Bethoorpara	Dug Well	11.55
429	KASARAGOD	Ambalathara	Dug Well	5
430	KASARAGOD	Chamundikunnu DW	Dug Well	11.15
431	KASARAGOD	Pullur	Dug Well	8.2
432	KASARAGOD	Chamundikunnu	Bore Well	10.55
433	KASARAGOD	Mavungal	Dug Well	6.1
434	KASARAGOD	Anangoor	Dug Well	9.65
435	KASARAGOD	Kasaragod	Dug Well	9.63
436	KASARAGOD	Seethamgulli	Bore Well	9
437	KASARAGOD	Bella	Bore Well	13.1
438	KASARAGOD	Kanhangad Coast (R1)	Dug Well	2.8
439	KASARAGOD	Ajannur(s1)	Tube Well	2.4
440	KASARAGOD	Periye Pz	Bore Well	9.6
441	KASARAGOD	Bekal	Dug Well	9.3
442	KASARAGOD	Pallikkara	Bore Well	9
443	KASARAGOD	Mylatti	Bore Well	6.62
444	KASARAGOD	Mangad	Dug Well	11.95
445	KASARAGOD	Panathur	Dug Well	10.95

446	KASARAGOD	Mangad	Bore Well	13.1
447	KASARAGOD	Odayanchal	Dug Well	3.01
448	KASARAGOD	Ajannur(s2)	Tube Well	1.95
449	KASARAGOD	Kolichal	Dug Well	6.4
450	KASARAGOD	Periyattadukkam	Dug Well	10.5
451	KASARAGOD	Kuniya	Bore Well	9.01
452	KASARAGOD	Thachangad	Dug Well	10.2
453	KASARAGOD	Rajapuram	Dug Well	8.05
454	KASARAGOD	Periye	Dug Well	10.5
455	KASARAGOD	Chalingal	Dug Well	9.1
456	KASARAGOD	Nattakkal	Dug Well	8.3
457	KASARAGOD	Chalingal Pz	Bore Well	9.6
458	KASARAGOD	Bhimanadi-II	Dug Well	5.3
459	KASARAGOD	Chittarikal	Dug Well	6.05
460	KASARAGOD	Choyankod (R1)	Dug Well	6.7
461	KASARAGOD	Karinthalam	Dug Well	11.8
462	KASARAGOD	Kayyur	Dug Well	10.6
463	KASARAGOD	Cheemeni	Dug Well	7.6
464	KASARAGOD	Kalichanadukkam	Dug Well	5.35
465	KASARAGOD	Thoyammel	Dug Well	10.5
466	KASARAGOD	Kanhangad Town	Dug Well	10
467	KASARAGOD	Vorkady	Dug Well	13.1
468	KASARAGOD	Koliyarpadavu (R1)	Dug Well	10.55
469	KASARAGOD	Manjeswar	Dug Well	5.6
470	KASARAGOD	Kadambar	Dug Well	12.75
471	KASARAGOD	Miyapadavu	Dug Well	11.7
472	KASARAGOD	Udinur Central	Dug Well	3.75
473	KASARAGOD	Trikaripur	Dug Well	3.8
474	KASARAGOD	Kalikadavu	Dug Well	5.55
475	KASARAGOD	Kannadipara	Dug Well	11.7
476	KASARAGOD	Chattanchal	Bore Well	14.6
477	KASARAGOD	Mulleria	Dug Well	18.15
478	KASARAGOD	Mogral Puthur	Dug Well	11.65
479	KASARAGOD	Nellikatta	Dug Well	8.3
480	KASARAGOD	Kundamkuzhy	Dug Well	6.05
481	KASARAGOD	Peraladkam	Dug Well	6.45
482	KASARAGOD	Vidyanagar	Bore Well	9.52
483	KASARAGOD	Kumbadaje	Dug Well	9.4
484	KASARAGOD	Yethadka	Dug Well	4.45
485	KASARAGOD	Kinningar	Dug Well	6.4
486	KASARAGOD	Movvar	Dug Well	17.69
487	KASARAGOD	Padiyathadka	Dug Well	7.7
488	KASARAGOD	Bedradka	Dug Well	12.95
489	KASARAGOD	Adhuru	Dug Well	8.5
490	KASARAGOD	Adoor	Dug Well	12.25

491	KASARAGOD	Ramdas Nagar	Dug Well	12.7
492	KASARAGOD	Muliyar	Dug Well	6.25
493	KASARAGOD	Naimarmoola	Dug Well	8.75
494	KASARAGOD	Parappa north	Dug Well	8.8
495	KASARAGOD	Bangathadka	Dug Well	15.5
496	KASARAGOD	Thaniyadi	Dug Well	5.05
497	KASARAGOD	Iriyani	Dug Well	10
498	KASARAGOD	Bandadka	Dug Well	11.15
499	KASARAGOD	Kuttikol	Dug Well	14.85
500	KASARAGOD	Kumbala (R1)	Dug Well	11.95
501	KASARAGOD	Kumbala	Bore Well	13.25
502	KASARAGOD	Mogral (R1)	Dug Well	10.8
503	KASARAGOD	Mavinakatta	Dug Well	23.4
504	KASARAGOD	Badiadka-R1	Dug Well	13.67
505	KASARAGOD	Puthige	Dug Well	15.37
506	KASARAGOD	Ukkinadka	Dug Well	1.95
507	KASARAGOD	Sorga	Dug Well	7.55
508	KASARAGOD	Angadimogar	Dug Well	9.9
509	KASARAGOD	Mandecap	Dug Well	8.22
510	KASARAGOD	Paivalike	Dug Well	9.75
511	KASARAGOD	Bedrampalla (R1)	Dug Well	7.8
512	KASARAGOD	Kaniyala	Dug Well	5.2
513	KASARAGOD	Jodukallu	Dug Well	9.7
514	KASARAGOD	Manjeshwar	Bore Well	10.65
515	KASARAGOD	Muligadde	Dug Well	9.8
516	KASARAGOD	Bayar	Dug Well	10.75
517	KASARAGOD	Perla	Dug Well	7.15
518	KASARAGOD	Banputhadka	Dug Well	8.1
519	KASARAGOD	Pallam	Dug Well	8.7
520	KASARAGOD	Kalathur	Dug Well	12.15
521	KASARAGOD	Pookatta	Dug Well	14.7
522	KASARAGOD	Adkasthala	Dug Well	11.25
523	KASARAGOD	Dharmathadka	Dug Well	10.8
524	KASARAGOD	Pachambla	Dug Well	9.3
525	KASARAGOD	Mangalpady (R1)	Dug Well	11.85
526	KASARAGOD	Ajannur DW	Dug Well	10.85
527	KASARAGOD	Kakkadavu (R1)	Dug Well	12.1
528	KASARAGOD	Elambachi	Dug Well	4.45
529	KASARAGOD	Kovval	Dug Well	7.9
530	KASARAGOD	Nileshwar	Dug Well	5.05
531	KASARAGOD	Putheriyadukkam	Dug Well	10.9
532	KASARAGOD	Karindalam	Bore Well	23.35
533	KASARAGOD	Bhimanadi (R1)	Dug Well	9.78
534	KASARAGOD	Kottiyadi	Dug Well	8.6
535	KOLLAM	Yeroor1	Bore Well	5.5

536	KOLLAM	Koovakad	Bore Well	5
537	KOLLAM	Koovakad DW	Dug Well	5.06
538	KOLLAM	Alayamon	Dug Well	8.78
539	KOLLAM	Anchal DW	Dug Well	12.7
540	KOLLAM	Edayam	Dug Well	12.7
541	KOLLAM	Nilamel	Dug Well	4.44
542	KOLLAM	Panmana-Manayil	Dug Well	3.6
543	KOLLAM	Vadakkumthala west	Dug Well	2.85
544	KOLLAM	Chavara-e	Tube Well	23.2
545	KOLLAM	Chavara (R1)	Dug Well	1.44
546	KOLLAM	Neendakara (R1)	Dug Well	1.3
547	KOLLAM	Chavara-west	Tube Well	1.73
548	KOLLAM	Ummmannur	Bore Well	14.3
549	KOLLAM	East Kallada	Dug Well	4.65
550	KOLLAM	Pavitreswaram	Dug Well	4.7
551	KOLLAM	Kuripalli	Dug Well	8.39
552	KOLLAM	Trikkadavur	Tube Well	17.04
553	KOLLAM	Karamkode	Dug Well	12.25
554	KOLLAM	Anchalammud (R1)	Dug Well	9.3
555	KOLLAM	Mulavana	Dug Well	10.9
556	KOLLAM	Kadapuzha	Dug Well	0.95
557	KOLLAM	Kumbalam (R1)	Dug Well	27
558	KOLLAM	Perinad	Dug Well	9.19
559	KOLLAM	Kanjiramkode	Dug Well	9.52
560	KOLLAM	Veliyam	Dug Well	10.27
561	KOLLAM	Odanavattom	Dug Well	7.7
562	KOLLAM	Ezhukone	Dug Well	4.71
563	KOLLAM	Kutavettur	Dug Well	7.04
564	KOLLAM	Kalluvathukkal	Bore Well	6
565	KOLLAM	Pallickal	Dug Well	6.54
566	KOLLAM	Manakarakavu-Vendar	Dug Well	8.8
567	KOLLAM	Kunnathur	Dug Well	18.7
568	KOLLAM	Chenkulam	Dug Well	5.65
569	KOLLAM	Nellikunnam Pz New	Bore Well	2.5
570	KOLLAM	Ezhukone (R1)	Dug Well	4.71
571	KOLLAM	Perumkulam	Dug Well	7.48
572	KOLLAM	Kottathala	Dug Well	10.85
573	KOLLAM	Kottarakara (R1)	Dug Well	17.8
574	KOLLAM	Punalur-I (R1)	Dug Well	10.9
575	KOLLAM	Kottamkulangara	Dug Well	2.15
576	KOLLAM	Kanjiramvila	Dug Well	9.6
577	KOLLAM	Puthoor	Dug Well	7.35
578	KOLLAM	Kulakada	Dug Well	7.7
579	KOLLAM	Nellikunnam DW	Dug Well	1.56
580	KOLLAM	Ailara	Dug Well	2.45

581	KOLLAM	Edamon	Dug Well	9.79
582	KOLLAM	Achenkovil (R1)	Dug Well	6.35
583	KOLLAM	Ayur	Dug Well	7.7
584	KOLLAM	Yeroor	Dug Well	2.7
585	KOLLAM	Karavaloor	Dug Well	5.9
586	KOLLAM	Ariyankavu	Dug Well	12.5
587	KOLLAM	Thenmala	Dug Well	7.45
588	KOLLAM	Bharathipuram	Dug Well	9.63
589	KOLLAM	Anchal	Bore Well	7.7
590	KOLLAM	Ezhamkulam	Dug Well	8.97
591	KOLLAM	Edamulakkal	Dug Well	6.2
592	KOLLAM	Ottakkal	Dug Well	9.1
593	KOLLAM	Kulathupuzha	Dug Well	7.6
594	KOLLAM	Karukone	Dug Well	7.35
595	KOLLAM	Chithara	Dug Well	8.25
596	KOLLAM	Roduvila	Dug Well	10.42
597	KOLLAM	Pangalukadu	Dug Well	5.51
598	KOLLAM	Channapetta	Dug Well	12.4
599	KOLLAM	Meenkulam	Dug Well	8.53
600	KOLLAM	Tadicaud (R1)	Dug Well	8.1
601	KOLLAM	Karunagapally	Dug Well	3.03
602	KOLLAM	Vilakkupara	Dug Well	10.8
603	KOLLAM	Vavvakkavu	Dug Well	2.88
604	KOLLAM	Tevalakara	Dug Well	9.1
605	KOLLAM	Vallikavu	Dug Well	1.3
606	KOLLAM	Manappalli	Tube Well	18.3
607	KOLLAM	Oachira1	Dug Well	1.55
608	KOLLAM	Kurungapalli	Dug Well	3.03
609	KOLLAM	Chakkuvalli	Dug Well	8.8
610	KOLLAM	Mynagapalli	Dug Well	8.78
611	KOLLAM	Anayadi	Dug Well	10.3
612	KOLLAM	Sasthamkottah (R1)	Dug Well	6.47
613	KOLLAM	Palamoodu	Dug Well	12.15
614	KOLLAM	Manapalli	Dug Well	6.61
615	KOLLAM	Vayyankara	Tube Well	15.8
616	KOLLAM	Cinemaparambu (R1)	Dug Well	12.68
617	KOLLAM	Sooranadu	Dug Well	5.9
618	KOLLAM	Muthukumel	Dug Well	6.47
619	KOLLAM	Vazhathopu	Bore Well	6
620	KOLLAM	Kandanchira	Dug Well	7.43
621	KOLLAM	Avaneswaram	Dug Well	5.48
622	KOLLAM	Punnala (R1)	Dug Well	8.75
623	KOLLAM	Kamukanchery	Dug Well	9.27
624	KOLLAM	Kunnada	Dug Well	12.45
625	KOLLAM	Pattanapuram	Dug Well	10.64

626	KOLLAM	Bhoothakulam	Dug Well	11.2
627	KOLLAM	Pozhikara	Dug Well	6.3
628	KOLLAM	Chadayamangalam (R1)	Dug Well	10.25
629	KOLLAM	Ummannur	Dug Well	9.4
630	KOLLAM	Akkal	Dug Well	9.83
631	KOLLAM	Kadakkal	Dug Well	8.1
632	KOLLAM	Madathara	Dug Well	6.44
633	KOLLAM	Oyur	Dug Well	10.15
634	KOLLAM	Thattamala	Dug Well	2.27
635	KOLLAM	Ayathil	Dug Well	9.03
636	KOLLAM	Kollam(Quilon)	Dug Well	8.12
637	KOLLAM	Kangathumukku	Dug Well	7.3
638	KOLLAM	Iravipuram (R1)	Dug Well	3.43
639	KOLLAM	Paripally (R1)	Dug Well	12.5
640	KOLLAM	Meenad	Dug Well	5.65
641	KOLLAM	Nedungolam	Dug Well	12.4
642	KOLLAM	Chathannur	Dug Well	13.2
643	KOLLAM	Ithikara	Dug Well	17.1
644	KOLLAM	Kalluvathukkal	Dug Well	10.53
645	KOLLAM	Mayyanad	Dug Well	6.8
646	KOLLAM	Kottiyam	Dug Well	9.96
647	KOLLAM	Kalluvettumkuzhi	Dug Well	8.46
648	KOLLAM	Paravur	Dug Well	8.56
649	KOLLAM	Alumoodu	Dug Well	8.7
650	KOLLAM	Kulapadam	Dug Well	8.1
651	KOLLAM	Vazhathoppu	Dug Well	7.38
652	KOTTAYAM	Ramapuram (R1)	Dug Well	8.34
653	KOTTAYAM	Marangattupalli	Dug Well	3.33
654	KOTTAYAM	Arunuttimangalam	Dug Well	5.87
655	KOTTAYAM	Kidangoor	Bore Well	7.5
656	KOTTAYAM	Monipalli	Dug Well	2.32
657	KOTTAYAM	Thalayolaparambu (R1)	Dug Well	3.36
658	KOTTAYAM	Mevellur	Dug Well	2.75
659	KOTTAYAM	Thidanad	Dug Well	6.59
660	KOTTAYAM	Punjar	Dug Well	1.64
661	KOTTAYAM	Melukavu Mattom	Dug Well	7.02
662	KOTTAYAM	Edamaruku	Dug Well	4.84
663	KOTTAYAM	Narianganam	Dug Well	5.64
664	KOTTAYAM	Panackapalam Jn	Dug Well	5.2
665	KOTTAYAM	Poonjar	Bore Well	5.86
666	KOTTAYAM	Kollappally	Dug Well	3.58
667	KOTTAYAM	Pravithanam	Dug Well	9.19
668	KOTTAYAM	Mutholi	Dug Well	6.78
669	KOTTAYAM	Poovathilappu	Dug Well	4.1
670	KOTTAYAM	Ponad	Dug Well	8.56



671	KOTTAYAM	Thottakam	Dug Well	2.2
672	KOTTAYAM	Madapally	Dug Well	2.3
673	KOTTAYAM	Vechur	Dug Well	2.2
674	KOTTAYAM	Kudavechur	Dug Well	2.44
675	KOTTAYAM	Palamkadavu	Dug Well	2.81
676	KOTTAYAM	Chempu- West	Tube Well	1.66
677	KOTTAYAM	Brahmamangalam	Dug Well	9.31
678	KOTTAYAM	Chempu - I(East)	Tube Well	3.25
679	KOTTAYAM	Chempu	Dug Well	3.15
680	KOTTAYAM	Kaduthuruthi	Dug Well	7.27
681	KOTTAYAM	Vellur-III	Dug Well	3.9
682	KOTTAYAM	Kalathur	Dug Well	6.66
683	KOTTAYAM	Ethakuzhy ( Kallara)	Dug Well	3.97
684	KOTTAYAM	Ettumannur	Bore Well	1.4
685	KOTTAYAM	Ettumannur East (R1)	Dug Well	6.05
686	KOTTAYAM	Iykarakunnam	Dug Well	9.65
687	KOTTAYAM	Palai	Dug Well	7.37
688	KOTTAYAM	Udayanapuram	Dug Well	1.6
689	KOTTAYAM	Vaikom	Dug Well	2.18
690	KOTTAYAM	Veyilnanampara (Kondur)	Dug Well	5.54
691	KOTTAYAM	Teekoy	Dug Well	5.72
692	KOTTAYAM	Chengalam South	Dug Well	1.24
693	KOTTAYAM	Thazhathangadi	Dug Well	2.56
694	KOTTAYAM	Kumarakom Pz	Tube Well	1.94
695	KOTTAYAM	Mukkoottuthara	Dug Well	3.85
696	KOTTAYAM	Chotti	Dug Well	6.8
697	KOTTAYAM	Edakadathy	Dug Well	12
698	KOTTAYAM	Kalakatty	Dug Well	6.09
699	KOTTAYAM	Kuttikal-R1	Dug Well	4.4
700	KOTTAYAM	Kanjirapally	Dug Well	10.06
701	KOTTAYAM	Thrikodithanam	Bore Well	14.86
702	KOTTAYAM	Paippad	Dug Well	8.72
703	KOTTAYAM	Edinjillam	Dug Well	3.22
704	KOTTAYAM	Thottakkad	Dug Well	6.9
705	KOTTAYAM	Anandasram	Dug Well	8.05
706	KOTTAYAM	Nedumkunnam	Dug Well	6.38
707	KOTTAYAM	Vakathanam	Dug Well	7.9
708	KOTTAYAM	Mundukuzhi	Dug Well	9.94
709	KOTTAYAM	Cheruvalli	Dug Well	7.05
710	KOTTAYAM	Thekethukavala	Dug Well	6.9
711	KOTTAYAM	Manimala	Dug Well	5.1
712	KOTTAYAM	Vazhur	Dug Well	5.15
713	KOTTAYAM	Punnaveli	Dug Well	4.9
714	KOTTAYAM	Kangazha	Dug Well	6.52
715	KOTTAYAM	Plakkalpadi	Dug Well	7.7

716	KOTTAYAM	Mannanam	Dug Well	9.17
717	KOTTAYAM	Chungam	Dug Well	4.23
718	KOTTAYAM	Kottayam (R1)	Dug Well	11.65
719	KOTTAYAM	Thiruvarpu	Dug Well	1.98
720	KOTTAYAM	Uzhavoor (R1)	Dug Well	3.55
721	KOTTAYAM	Kozha	Dug Well	3
722	KOTTAYAM	Kuravilangad	Bore Well	5.05
723	KOTTAYAM	Kuravilangad1	Dug Well	5.64
724	KOTTAYAM	Kuruppanthara	Dug Well	2.2
725	KOTTAYAM	Vempalle	Dug Well	2.87
726	KOTTAYAM	Kummannur	Dug Well	6.15
727	KOTTAYAM	Kidangur-R1	Dug Well	6
728	KOTTAYAM	Kadaplamattom	Dug Well	5.75
729	KOTTAYAM	Chamampathal	Dug Well	4.12
730	KOTTAYAM	Koothrappally	Dug Well	4.01
731	KOTTAYAM	Changanasserry	Dug Well	2.82
732	KOTTAYAM	Pambadi	Dug Well	6.74
733	KOTTAYAM	Kozhuvanal	Dug Well	4.28
734	KOTTAYAM	Elamkulam	Dug Well	5.74
735	KOTTAYAM	Pallikkathodu (R1)	Dug Well	6.35
736	KOTTAYAM	Cheruthikara	Dug Well	6.1
737	KOTTAYAM	Urulikunnam	Dug Well	5.08
738	KOTTAYAM	Kooroppada	Dug Well	4.8
739	KOTTAYAM	Paruthumpara	Dug Well	9.61
740	KOTTAYAM	Pallom (nattagam)	Dug Well	7.75
741	KOTTAYAM	Kurichy (Sachivothamapuram)	Dug Well	7.25
742	KOTTAYAM	Kumarakom	Dug Well	1.4
743	KOTTAYAM	Puthupally	Dug Well	7.66
744	KOTTAYAM	Kalathipady	Dug Well	9.53
745	KOTTAYAM	Ponthanpuzha	Dug Well	6.09
746	KOTTAYAM	Erumeli	Dug Well	5.74
747	KOTTAYAM	Kuvapalli	Dug Well	6.35
748	KOTTAYAM	Mundakayam	Dug Well	10.16
749	KOTTAYAM	Mukkada	Dug Well	9.86
750	KOTTAYAM	Ayarkunnam	Dug Well	5.27
751	KOTTAYAM	Neendur	Dug Well	4.6
752	KOTTAYAM	Pulikuttisseri	Dug Well	2.03
753	KOTTAYAM	Ayamkudi	Dug Well	11.5
754	KOZHICODE	Azhinjilam	Dug Well	2.54
755	KOZHICODE	Nallalam	Dug Well	3.95
756	KOZHICODE	Vellimadakunnu pz	Bore Well	19.93
757	KOZHICODE	Kallai	Dug Well	4.84
758	KOZHICODE	Naduvattom	Dug Well	7.9
759	KOZHICODE	Vellimadakunnu	Dug Well	14.36
760	KOZHICODE	Manassery	Dug Well	3.58

761	KOZHIKODE	Karaparamba	Dug Well	2.06
762	KOZHIKODE	Chevayur	Dug Well	12.07
763	KOZHIKODE	Nanminda	Dug Well	6.56
764	KOZHIKODE	Punnasseri	Dug Well	7.82
765	KOZHIKODE	Elattur	Dug Well	3.32
766	KOZHIKODE	Narikuni	Dug Well	4.36
767	KOZHIKODE	Kakkur	Dug Well	5.97
768	KOZHIKODE	Moodali	Dug Well	2.97
769	KOZHIKODE	Kannoor	Dug Well	4.97
770	KOZHIKODE	West Pudupadi	Dug Well	2.9
771	KOZHIKODE	Koduvalli North	Dug Well	5.57
772	KOZHIKODE	Tamarasseri	Dug Well	1.2
773	KOZHIKODE	Pudupadi	Dug Well	2.42
774	KOZHIKODE	Muliyangal	Dug Well	2.67
775	KOZHIKODE	Thiruvambady	Dug Well	4.13
776	KOZHIKODE	Melady 1	Dug Well	1.81
777	KOZHIKODE	Nadapuram	Dug Well	3.55
778	KOZHIKODE	Kariyathumpara	Dug Well	2.97
779	KOZHIKODE	Atholi	Dug Well	4.52
780	KOZHIKODE	Karuvannur	Dug Well	3.98
781	KOZHIKODE	Thenamkuzhi	Dug Well	4.4
782	KOZHIKODE	Naduvannur	Dug Well	8.33
783	KOZHIKODE	Kokallur pz	Bore Well	9.28
784	KOZHIKODE	Kurachund	Dug Well	5.66
785	KOZHIKODE	Karuvannur pz	Bore Well	1.09
786	KOZHIKODE	Badagara	Dug Well	5.66
787	KOZHIKODE	Pudupanam	Dug Well	5.76
788	KOZHIKODE	Thodannur(west)	Bore Well	5.86
789	KOZHIKODE	Villyapalli	Dug Well	6.82
790	KOZHIKODE	Thiruvallur	Dug Well	2.16
791	KOZHIKODE	Kalikadavu pz	Bore Well	3.34
792	KOZHIKODE	Koothali	Dug Well	5.28
793	KOZHIKODE	Chombala(pz)	Tube Well	4.76
794	KOZHIKODE	Thodannur	Dug Well	6.45
795	KOZHIKODE	Mukkali	Dug Well	4.96
796	KOZHIKODE	Chombala(w1)	Tube Well	4.4
797	KOZHIKODE	Chombala(w4)	Tube Well	4.55
798	KOZHIKODE	Orkattery	Dug Well	3.83
799	KOZHIKODE	Chombala(w2)	Tube Well	4.31
800	KOZHIKODE	Kunnumakkara	Dug Well	2.18
801	KOZHIKODE	Vattoli	Dug Well	5.32
802	KOZHIKODE	Mullankunnu	Dug Well	1.67
803	KOZHIKODE	Devarkoil	Dug Well	8.01
804	KOZHIKODE	Kuttiyadi	Dug Well	7.45
805	KOZHIKODE	Thuneri pz	Bore Well	4.36

806	KOZHIKODE	Pudukayam	Dug Well	8.04
807	KOZHIKODE	Chiulavi (Niravamal)	Dug Well	7.76
808	KOZHIKODE	Valayam	Dug Well	6.6
809	KOZHIKODE	Kallachi	Dug Well	2.25
810	KOZHIKODE	Thuneri1	Dug Well	4.2
811	KOZHIKODE	Bhumivathukkal	Dug Well	6.98
812	KOZHIKODE	Kayapanachi	Dug Well	4.63
813	KOZHIKODE	Beypore	Dug Well	3.77
814	KOZHIKODE	Chaliyam	Dug Well	3.47
815	KOZHIKODE	Ramanattukara (R1)	Dug Well	2.57
816	KOZHIKODE	Calicut Beach	Dug Well	3.04
817	KOZHIKODE	Chevayur pz	Bore Well	25.76
818	KOZHIKODE	Cheruvannur pz	Bore Well	7.81
819	KOZHIKODE	Feroke DW	Dug Well	13.12
820	KOZHIKODE	Thikkodi	Dug Well	6.4
821	KOZHIKODE	Meladi	Tube Well	1.57
822	KOZHIKODE	Balussery pz	Bore Well	7.87
823	KOZHIKODE	Ulliyeri	Dug Well	3.54
824	KOZHIKODE	Unnikulam	Dug Well	2.5
825	KOZHIKODE	Balusseri	Dug Well	7.49
826	KOZHIKODE	Meppayur	Dug Well	4.33
827	KOZHIKODE	Mattanodu	Dug Well	9.25
828	KOZHIKODE	Kakkayam	Dug Well	3.51
829	KOZHIKODE	Murampathy	Dug Well	5.74
830	KOZHIKODE	Chulur	Dug Well	4.28
831	KOZHIKODE	Chemencheri	Dug Well	3.33
832	KOZHIKODE	Puthur	Dug Well	8.04
833	KOZHIKODE	Kodencherry	Dug Well	1.3
834	KOZHIKODE	Perambra	Dug Well	3.33
835	KOZHIKODE	Perumpally	Dug Well	3.87
836	KOZHIKODE	Malayamma	Dug Well	4.77
837	KOZHIKODE	Koduvalli	Dug Well	9.03
838	KOZHIKODE	Ramanattukara (R2)	Dug Well	2.57
839	KOZHIKODE	Pavangad	Dug Well	3.73
840	KOZHIKODE	Cheruvannur West	Dug Well	4.94
841	KOZHIKODE	Kozhikode	Dug Well	15.2
842	KOZHIKODE	Iringallur	Dug Well	3.56
843	KOZHIKODE	Kottakadavu	Dug Well	15.46
844	KOZHIKODE	Quilandy	Dug Well	6.37
845	KOZHIKODE	Nayarkuzhi	Dug Well	6.8
846	KOZHIKODE	Chelavur	Dug Well	9.58
847	KOZHIKODE	Mavoor-ii	Dug Well	10.13
848	KOZHIKODE	Mavoor-i	Dug Well	7.4
849	KOZHIKODE	Peruvayal	Dug Well	6.78
850	KOZHIKODE	Kunnamangalam	Dug Well	13.03

851	KOZHIKODE	Kannankara (Chelannur)	Dug Well	2.17
852	KOZHIKODE	Pathimangalam	Dug Well	9.88
853	MALAPPURAM	Cherukulam	Dug Well	12
854	MALAPPURAM	Tanur	Dug Well	4.65
855	MALAPPURAM	Athirumada	Dug Well	14.2
856	MALAPPURAM	Malappuram	Dug Well	6.5
857	MALAPPURAM	Pulamantol	Dug Well	9.6
858	MALAPPURAM	Krishnapuram Puthentheru	Dug Well	3.65
859	MALAPPURAM	Anjuvadi	Dug Well	2.75
860	MALAPPURAM	Arikode	Dug Well	6.35
861	MALAPPURAM	Kavanur1	Dug Well	12.95
862	MALAPPURAM	Kadalundi	Dug Well	4
863	MALAPPURAM	Chokkad	Dug Well	4.55
864	MALAPPURAM	Karulai	Dug Well	8.65
865	MALAPPURAM	Moothedam	Dug Well	5.75
866	MALAPPURAM	Narokavu	Dug Well	14.4
867	MALAPPURAM	Eriyad	Dug Well	3.9
868	MALAPPURAM	Athanikkal	Dug Well	6.2
869	MALAPPURAM	Kalikavu	Dug Well	4.85
870	MALAPPURAM	Vaniyambalam	Dug Well	7.35
871	MALAPPURAM	Marutha (R1)	Dug Well	9.3
872	MALAPPURAM	Buliyampadam (Velumbiampadam) (R1)	Dug Well	10.8
873	MALAPPURAM	Buliyampadam (Velumbiampadam)	Dug Well	10.8
874	MALAPPURAM	Vazhikadavu	Dug Well	3.15
875	MALAPPURAM	Karunechi	Dug Well	20.53
876	MALAPPURAM	Edakkara	Bore Well	18.4
877	MALAPPURAM	Uppada	Dug Well	2.6
878	MALAPPURAM	Chungathara (R1)	Dug Well	4.5
879	MALAPPURAM	Karulayi	Bore Well	3.31
880	MALAPPURAM	Marancheri	Dug Well	6.31
881	MALAPPURAM	Kanjiramukku	Dug Well	5.4
882	MALAPPURAM	Perumpadappu	Dug Well	5.3
883	MALAPPURAM	Kadannamanna	Dug Well	8.05
884	MALAPPURAM	Tirukkad	Dug Well	7.2
885	MALAPPURAM	Kuruva (Padaparamba)	Dug Well	12.2
886	MALAPPURAM	Vengad	Dug Well	7.6
887	MALAPPURAM	Kulattur	Dug Well	5.7
888	MALAPPURAM	Puzhakkattkiri	Bore Well	13.3
889	MALAPPURAM	Paral	Dug Well	6.65
890	MALAPPURAM	Tachinganedam	Dug Well	7.3
891	MALAPPURAM	Cherukara	Dug Well	7.4
892	MALAPPURAM	Chemmalassery Pz	Bore Well	27.2
893	MALAPPURAM	Ammnikad Pz	Bore Well	11.5
894	MALAPPURAM	Thazhekod Kappumugham	Dug Well	9.48

895	MALAPPURAM	Muthukurissy Pz	Bore Well	15.5
896	MALAPPURAM	Melattur	Dug Well	7.75
897	MALAPPURAM	Thekkad	Bore Well	11.32
898	MALAPPURAM	Ramapuram	Dug Well	8.2
899	MALAPPURAM	Akkaparambu	Dug Well	9.6
900	MALAPPURAM	Kadungapuram	Dug Well	10
901	MALAPPURAM	Puzhakkatteri	Dug Well	6.2
902	MALAPPURAM	Angadipuram	Dug Well	9.44
903	MALAPPURAM	Thazhekkode	Bore Well	11.32
904	MALAPPURAM	Chemmalassery	Dug Well	6.2
905	MALAPPURAM	Othukkungal DW	Dug Well	13.7
906	MALAPPURAM	Othukkungal	Bore Well	36
907	MALAPPURAM	Kizhumuri - Oorakam	Dug Well	9.7
908	MALAPPURAM	Karumbil	Dug Well	12.9
909	MALAPPURAM	Parappanangadi	Dug Well	3.35
910	MALAPPURAM	Athanikal- Vallikunnu	Dug Well	14.16
911	MALAPPURAM	Padikkal	Dug Well	10.05
912	MALAPPURAM	Venniyur	Dug Well	8.8
913	MALAPPURAM	Parambilpeedika	Bore Well	35.29
914	MALAPPURAM	Tenjippalam (R1)	Dug Well	14.1
915	MALAPPURAM	Tirurangadi	Dug Well	13.3
916	MALAPPURAM	Ariyallur	Dug Well	4.3
917	MALAPPURAM	Manjeri	Dug Well	4.9
918	MALAPPURAM	Ramankulam	Dug Well	7.3
919	MALAPPURAM	Cherani	Dug Well	6
920	MALAPPURAM	Pookottoor	Dug Well	2.25
921	MALAPPURAM	Nellikuth	Dug Well	6.6
922	MALAPPURAM	Cherukulam	Bore Well	13.1
923	MALAPPURAM	Mudikode	Dug Well	5.5
924	MALAPPURAM	Anakkayam	Dug Well	7.1
925	MALAPPURAM	Pandalur DW	Dug Well	7.55
926	MALAPPURAM	Pandalur	Bore Well	9.7
927	MALAPPURAM	Ponmala	Bore Well	8.31
928	MALAPPURAM	Vadakkemanna	Dug Well	7.15
929	MALAPPURAM	Nediyirippu Pz	Bore Well	2
930	MALAPPURAM	Karuvankallu	Dug Well	8.3
931	MALAPPURAM	Kunnumpuram	Dug Well	13.45
932	MALAPPURAM	Nediyirippu	Dug Well	3.25
933	MALAPPURAM	Olavattur	Dug Well	9.85
934	MALAPPURAM	Parappur	Dug Well	12
935	MALAPPURAM	Kondotty	Dug Well	7.3
936	MALAPPURAM	Kottapuram	Dug Well	5.1
937	MALAPPURAM	Pandikkad (R1)	Dug Well	5
938	MALAPPURAM	Thuvur	Bore Well	10.69
939	MALAPPURAM	Payyanad	Dug Well	8

940	MALAPPURAM	Karuvarakundu	Dug Well	3.45
941	MALAPPURAM	Pathiriyal	Dug Well	7.54
942	MALAPPURAM	Pukothu	Dug Well	8.7
943	MALAPPURAM	Puthenkulam	Dug Well	3.65
944	MALAPPURAM	Peruvakkad	Dug Well	7.2
945	MALAPPURAM	Nilambur (R1)	Dug Well	4.5
946	MALAPPURAM	Edavanna (R1)	Dug Well	10.4
947	MALAPPURAM	Wandur	Dug Well	9.2
948	MALAPPURAM	Kattumunda (R1)	Dug Well	13.1
949	MALAPPURAM	ThiruvadiDW	Dug Well	3.55
950	MALAPPURAM	Thrikkalangode	Dug Well	4.6
951	MALAPPURAM	Thuvur DW	Dug Well	10.6
952	MALAPPURAM	Vazhakkad	Dug Well	3.9
953	MALAPPURAM	Tripanachi	Dug Well	9.1
954	MALAPPURAM	Pukattery	Dug Well	9.3
955	MALAPPURAM	Vellila (R1)	Dug Well	7
956	MALAPPURAM	Valancheri (R1)	Dug Well	9.9
957	MALAPPURAM	Valancheri Pz	Bore Well	23.4
958	MALAPPURAM	Thozhuvannur	Bore Well	16.9
959	MALAPPURAM	Karipol	Dug Well	12.25
960	MALAPPURAM	Kariavattam	Dug Well	7.9
961	MALAPPURAM	Perinthalmanna (R1)	Dug Well	6.25
962	MALAPPURAM	Kottakkal	Dug Well	9.1
963	MALAPPURAM	Valavannur	Dug Well	13.7
964	MALAPPURAM	Vettom1	Dug Well	4.2
965	MALAPPURAM	Edakkulam	Bore Well	40
966	MALAPPURAM	Purathur	Dug Well	2.4
967	MALAPPURAM	Tirur	Dug Well	12.75
968	MALAPPURAM	Mankeri	Dug Well	6.45
969	MALAPPURAM	Kuttiapuram	Dug Well	3.8
970	MALAPPURAM	Mankeri Pz	Bore Well	16.9
971	MALAPPURAM	Kadampuzha	Dug Well	11.45
972	MALAPPURAM	Amminikad	Dug Well	6.2
973	MALAPPURAM	Vylattur (R2)	Dug Well	8.25
974	MALAPPURAM	Ponnani (R1)	Dug Well	1.75
975	MALAPPURAM	Kaladi1	Bore Well	8.29
976	MALAPPURAM	Edappal	Dug Well	15.2
977	MALAPPURAM	Thavanur	Dug Well	9.65
978	MALAPPURAM	Valiyakunnu	Dug Well	7.35
979	MALAPPURAM	Iswaramangalam	Dug Well	3.6
980	MALAPPURAM	Chamravattom	Dug Well	1.3
981	MALAPPURAM	Moochikkal ( Clari Moochikkal)	Dug Well	5.58
982	MALAPPURAM	Paravana	Dug Well	4.9
983	MALAPPURAM	Mangalam (R1)	Dug Well	2.74
984	MALAPPURAM	Beeranchira	Dug Well	9.5

985	MALAPPURAM	Thirunavaya	Dug Well	5.12
986	MALAPPURAM	Meenedathur	Dug Well	3.4
987	PALAKKAD	Melarkode	Bore Well	22.33
988	PALAKKAD	Nemmara	Dug Well	2.18
989	PALAKKAD	Nemmara1	Bore Well	4.01
990	PALAKKAD	Adiparanda	Dug Well	7.1
991	PALAKKAD	Pallavur	Dug Well	4.92
992	PALAKKAD	Naikarapadi	Dug Well	8.38
993	PALAKKAD	Ariyur (R1)	Dug Well	11.55
994	PALAKKAD	Thachanattukara	Dug Well	11.49
995	PALAKKAD	Kalladikode	Dug Well	9.59
996	PALAKKAD	Alanallur	Dug Well	8.44
997	PALAKKAD	Tenkara	Dug Well	3.74
998	PALAKKAD	Thenkara	Bore Well	1.78
999	PALAKKAD	Mannarkkad (R1)	Dug Well	4.39
1000	PALAKKAD	Palamattom	Dug Well	8.49
1001	PALAKKAD	Kanjirapuzha	Dug Well	3.45
1002	PALAKKAD	Viyyakurissi	Dug Well	4.73
1003	PALAKKAD	Walayar	Dug Well	10.05
1004	PALAKKAD	Punchapadam	Dug Well	7.06
1005	PALAKKAD	Karimpuzha	Dug Well	2.73
1006	PALAKKAD	Kottapuram	Dug Well	8.41
1007	PALAKKAD	Kumaramputtur	Dug Well	3.22
1008	PALAKKAD	Pullundassery	Bore Well	5.08
1009	PALAKKAD	Sreekrishnapuram	Dug Well	8.92
1010	PALAKKAD	Cherpulassery (R1)	Dug Well	10.07
1011	PALAKKAD	Kulakkad	Dug Well	4.75
1012	PALAKKAD	Malampuzha1	Bore Well	4.38
1013	PALAKKAD	Muttikulangara Pz	Bore Well	21.4
1014	PALAKKAD	Chullimada Pz	Bore Well	12.08
1015	PALAKKAD	Vennakara	Bore Well	16.4
1016	PALAKKAD	Pallathery	Dug Well	6.23
1017	PALAKKAD	Kanjikode(FCRI)	Bore Well	8.88
1018	PALAKKAD	Chullimada (R1)	Dug Well	3.87
1019	PALAKKAD	Kanjikode	Dug Well	5.86
1020	PALAKKAD	Dhoni	Dug Well	6.91
1021	PALAKKAD	Pudhupariyaram	Dug Well	5.14
1022	PALAKKAD	Parali (Chakkanthara)	Dug Well	3.09
1023	PALAKKAD	Kongad	Bore Well	5.3
1024	PALAKKAD	Pattambi	Dug Well	6.75
1025	PALAKKAD	Pattambi Pz	Bore Well	7.05
1026	PALAKKAD	Koppam (R1)	Dug Well	5.96
1027	PALAKKAD	Ongallur	Dug Well	8.19
1028	PALAKKAD	Mulayankavu	Dug Well	7.77
1029	PALAKKAD	Thiruvegapuram	Dug Well	8.35



1030	PALAKKAD	Koduvayur	Dug Well	6.75
1031	PALAKKAD	Kannimari	Dug Well	4.12
1032	PALAKKAD	Meenkara	Dug Well	9.97
1033	PALAKKAD	Kollengode -I	Dug Well	4.15
1034	PALAKKAD	Kollengode- II	Dug Well	2.85
1035	PALAKKAD	Kunisseri	Dug Well	3.85
1036	PALAKKAD	Melarkode	Dug Well	7.55
1037	PALAKKAD	Athipetta	Dug Well	3.41
1038	PALAKKAD	Vadakkancherry	Dug Well	4.45
1039	PALAKKAD	Kavassery	Dug Well	2.83
1040	PALAKKAD	Koonathara	Dug Well	2.95
1041	PALAKKAD	Padur DW	Dug Well	5.73
1042	PALAKKAD	Kunnissery	Bore Well	9.55
1043	PALAKKAD	Padur	Bore Well	20.65
1044	PALAKKAD	Alathur	Dug Well	6.75
1045	PALAKKAD	Chittoor	Dug Well	4.88
1046	PALAKKAD	Peringottukurissu	Bore Well	11.9
1047	PALAKKAD	Kottayi	Dug Well	9.85
1048	PALAKKAD	Mathur	Dug Well	4
1049	PALAKKAD	Kuzhalmannam	Dug Well	2.52
1050	PALAKKAD	Kannadi	Bore Well	1.05
1051	PALAKKAD	Tholanur	Dug Well	3.22
1052	PALAKKAD	Peringottukurissu DW	Dug Well	5.85
1053	PALAKKAD	Odannur	Dug Well	7.4
1054	PALAKKAD	Kodunthirapalli	Dug Well	2.83
1055	PALAKKAD	Koduvayur	Bore Well	7.14
1056	PALAKKAD	Noorani (Palakkad West)	Dug Well	2.35
1057	PALAKKAD	Kannadi	Dug Well	4.4
1058	PALAKKAD	Mattumanda	Dug Well	3.46
1059	PALAKKAD	Kulapully Pz	Bore Well	6.39
1060	PALAKKAD	Nellikattiri Pz	Bore Well	13.64
1061	PALAKKAD	Athikode	Dug Well	7.3
1062	PALAKKAD	Kozhinjampara-R1	Dug Well	9.33
1063	PALAKKAD	RVP Pudhur	Dug Well	9.1
1064	PALAKKAD	Nedupuni	Dug Well	8.15
1065	PALAKKAD	Ellissery	Dug Well	6.82
1066	PALAKKAD	Vannamada	Dug Well	9.12
1067	PALAKKAD	Kozhipara	Dug Well	5.7
1068	PALAKKAD	Kambilichungam	Dug Well	3.78
1069	PALAKKAD	Perumatty1	Dug Well	4.34
1070	PALAKKAD	Gopalapuram	Dug Well	15.5
1071	PALAKKAD	Kodumbu	Dug Well	3.56
1072	PALAKKAD	Kunnamkattupathy Pz	Bore Well	10.63
1073	PALAKKAD	Palghat	Dug Well	8.05
1074	PALAKKAD	Nanniyodu Pz	Bore Well	38.8

1075	PALAKKAD	Nanniyode	Dug Well	6.63
1076	PALAKKAD	Meenakshipuram	Dug Well	7.85
1077	PALAKKAD	Plachimada	Bore Well	15.1
1078	PALAKKAD	Erattakulam	Dug Well	3.04
1079	PALAKKAD	Panayur(Athikodu) Pz	Bore Well	6.73
1080	PALAKKAD	Chunnambuthara	Dug Well	3.29
1081	PALAKKAD	Eruthenpathi	Dug Well	9.2
1082	PALAKKAD	Kozhipara Pz	Bore Well	7.5
1083	PALAKKAD	Velanthavalam	Dug Well	11.9
1084	PALAKKAD	Shoranur	Dug Well	8.7
1085	PALAKKAD	Ambalappara	Dug Well	7.91
1086	PALAKKAD	Palappuram-ii	Dug Well	7.69
1087	PALAKKAD	Tannirkod	Dug Well	8.1
1088	PALAKKAD	Chalisseri	Dug Well	9.07
1089	PALAKKAD	Thirumittamcode (Chathanur )	Dug Well	5.66
1090	PALAKKAD	Koottanad	Dug Well	9.96
1091	PALAKKAD	Peringode	Dug Well	8.98
1092	PALAKKAD	Kumaranallur	Dug Well	10.41
1093	PALAKKAD	Nellikatteri	Dug Well	8.52
1094	PALAKKAD	Kudallur	Dug Well	6.76
1095	PALAKKAD	Trithala Pz	Bore Well	5.59
1096	PALAKKAD	Trittala	Dug Well	6.02
1097	PALAKKAD	Mankara	Dug Well	4.98
1098	PALAKKAD	Lakkidi (Ramakrishnapadi)	Dug Well	8.45
1099	PALAKKAD	Ottapalam	Dug Well	5.18
1100	PALAKKAD	Chunangad	Dug Well	8.2
1101	PALAKKAD	Banglow Kunnu	Dug Well	8.82
1102	PALAKKAD	Kadampazhipuram	Dug Well	4.05
1103	PALAKKAD	Moochankundu	Dug Well	9.77
1104	PALAKKAD	Pattanchery	Dug Well	3.75
1105	PALAKKAD	Pudhunagaram	Dug Well	6.89
1106	PALAKKAD	Chemmampathi	Dug Well	10.41
1107	PALAKKAD	Moochangundu	Bore Well	12.9
1108	PALAKKAD	Chulliar Dam	Dug Well	4.25
1109	PALAKKAD	Muthalamada1	Dug Well	8.28
1110	PALAKKAD	Pookkottukavu	Dug Well	7.41
1111	PALAKKAD	Vaniyamkulam	Dug Well	7.95
1112	PALAKKAD	Lakkidi Thekkumangalam	Bore Well	20.55
1113	PALAKKAD	Mundur	Dug Well	3.2
1114	PALAKKAD	Kottassery (Vattassery)	Dug Well	4.43
1115	PALAKKAD	Karimpuzha	Bore Well	4.7
1116	PALAKKAD	Mundur Pz	Bore Well	22.66
1117	PALAKKAD	Kongad1	Dug Well	6.15
1118	PALAKKAD	Thiruveegapuram	Bore Well	13.63
1119	PALAKKAD	Vilayur	Dug Well	6.14

1120	PALAKKAD	Vadanamkkurissi	Dug Well	5.78
1121	PALAKKAD	Vallapuzha	Dug Well	5.73
1122	PALAKKAD	Ummini	Dug Well	5.03
1123	PALAKKAD	Panayur ( Athikode)	Dug Well	3.1
1124	PALAKKAD	Koolimattom	Dug Well	5.64
1125	PALAKKAD	Malampuzha	Dug Well	2.15
1126	PALAKKAD	Thachanpara	Dug Well	2.73
1127	PATHANAMTHITTA	Kodumon	Dug Well	7.5
1128	PATHANAMTHITTA	Churakkod	Dug Well	8.02
1129	PATHANAMTHITTA	Adoor (R2)	Dug Well	9.2
1130	PATHANAMTHITTA	Ezhamkulam	Dug Well	7
1131	PATHANAMTHITTA	Kunnamthanam	Bore Well	3.25
1132	PATHANAMTHITTA	Kottanadu	Dug Well	4.2
1133	PATHANAMTHITTA	Kallooppara	Dug Well	4.67
1134	PATHANAMTHITTA	Edakkulam	Dug Well	5.55
1135	PATHANAMTHITTA	Laha balawadi	Dug Well	2.75
1136	PATHANAMTHITTA	Vechoolchira (R1)	Dug Well	4.53
1137	PATHANAMTHITTA	Chetheckal	Bore Well	2.95
1138	PATHANAMTHITTA	Karinkulam (R1)	Dug Well	2.95
1139	PATHANAMTHITTA	Angamuzhi	Dug Well	5.69
1140	PATHANAMTHITTA	Nilakkal New	Dug Well	5.3
1141	PATHANAMTHITTA	Plappally	Dug Well	2.71
1142	PATHANAMTHITTA	Kadumeenchira	Dug Well	9.9
1143	PATHANAMTHITTA	Elanthoor	Bore Well	2.5
1144	PATHANAMTHITTA	Elavumthitta	Dug Well	8.2
1145	PATHANAMTHITTA	Kaipattoor	Dug Well	7
1146	PATHANAMTHITTA	Thiruvalla	Dug Well	10.3
1147	PATHANAMTHITTA	Podiyadi	Dug Well	2.65
1148	PATHANAMTHITTA	Peringara (R1)	Dug Well	2.2
1149	PATHANAMTHITTA	Pulikeezh	Dug Well	3.2
1150	PATHANAMTHITTA	Muthoor	Dug Well	3.9
1151	PATHANAMTHITTA	Kuttoor	Dug Well	3.65
1152	PATHANAMTHITTA	Thayattumala	Bore Well	11.25
1153	PATHANAMTHITTA	Kidanganoor	Dug Well	4.9
1154	PATHANAMTHITTA	Cherukolpuzha (Airoor)	Dug Well	6.8
1155	PATHANAMTHITTA	Koipuram (R1)	Dug Well	7.45
1156	PATHANAMTHITTA	Kozhenchery	Dug Well	2.28
1157	PATHANAMTHITTA	Vennikulam	Dug Well	3.4
1158	PATHANAMTHITTA	Aranmula (R2)	Dug Well	6.3
1159	PATHANAMTHITTA	Eraviperoor	Dug Well	3.65
1160	PATHANAMTHITTA	Vallamkulam	Dug Well	5
1161	PATHANAMTHITTA	Thelliyur	Dug Well	8.06
1162	PATHANAMTHITTA	Pullad	Dug Well	6.5
1163	PATHANAMTHITTA	Laha peruman	Dug Well	9.8
1164	PATHANAMTHITTA	Kadumeenchira Pz	Bore Well	16.9

1165	PATHANAMTHITTA	Maniyar	Dug Well	5.8
1166	PATHANAMTHITTA	Chittar (R1)	Dug Well	9.7
1167	PATHANAMTHITTA	Vadasserikara	Dug Well	4.1
1168	PATHANAMTHITTA	Ranni i	Dug Well	4.5
1169	PATHANAMTHITTA	Murani	Dug Well	2.8
1170	PATHANAMTHITTA	Kunnamthanam1	Dug Well	13.6
1171	PATHANAMTHITTA	Kaviyur (R1)	Dug Well	8.95
1172	PATHANAMTHITTA	Kottangal Pz	Bore Well	2.6
1173	PATHANAMTHITTA	Kottangal	Dug Well	1.9
1174	PATHANAMTHITTA	Vaipur	Dug Well	1.9
1175	PATHANAMTHITTA	Mallappally	Dug Well	4.4
1176	PATHANAMTHITTA	Kadambanad	Dug Well	7.55
1177	PATHANAMTHITTA	Mannadi	Dug Well	3.5
1178	PATHANAMTHITTA	Kalanjoor	Dug Well	8.25
1179	PATHANAMTHITTA	Kudutha	Dug Well	8.25
1180	PATHANAMTHITTA	Ezhamkulam	Bore Well	6.95
1181	PATHANAMTHITTA	Poothangara	Dug Well	5.6
1182	PATHANAMTHITTA	Enathu	Dug Well	8.5
1183	PATHANAMTHITTA	Thatta (R1)	Dug Well	1.4
1184	PATHANAMTHITTA	Pandalam Town	Dug Well	1.4
1185	PATHANAMTHITTA	Paranthal	Dug Well	5.3
1186	PATHANAMTHITTA	Pandalam-1	Dug Well	4.1
1187	PATHANAMTHITTA	Kulanada	Dug Well	9.55
1188	PATHANAMTHITTA	Malayalapuzha	Dug Well	6.8
1189	PATHANAMTHITTA	Malayalapuzha Pz	Bore Well	18.5
1190	PATHANAMTHITTA	Pathanamthitta (R1)	Dug Well	4.33
1191	PATHANAMTHITTA	Kumbanad	Dug Well	6.78
1192	PATHANAMTHITTA	Vakayar (Valiakavu)	Dug Well	3.2
1193	PATHANAMTHITTA	Vallikod	Dug Well	6
1194	PATHANAMTHITTA	Koodal	Dug Well	6.97
1195	PATHANAMTHITTA	Athiringal (R1)	Dug Well	8.35
1196	PATHANAMTHITTA	Thannithodu	Dug Well	7.4
1197	PATHANAMTHITTA	Athumbukulam	Dug Well	4.1
1198	PATHANAMTHITTA	Konni	Dug Well	6.28
1199	PATHANAMTHITTA	Vallicode	Bore Well	3.85
1200	PATHANAMTHITTA	Kalleli Pz	Bore Well	4.45
1201	PATHANAMTHITTA	Angadikkal North	Dug Well	8.6
1202	PATHANAMTHITTA	V Kottayam	Dug Well	9.6
1203	PATHANAMTHITTA	Ullannur	Dug Well	7.75
1204	PATHANAMTHITTA	Pandalam	Bore Well	4.25
1205	PATHANAMTHITTA	Aruvapulam	Dug Well	4.4
1206	PATHANAMTHITTA	Omallur(R1)	Dug Well	9.05
1207	PATHANAMTHITTA	Koipuram Pz	Bore Well	11.8
1208	PATHANAMTHITTA	Thumpaman	Dug Well	8.65
1209	PATHANAMTHITTA	Thadiyur	Dug Well	7.9

1210	PATHANAMTHITTA	Elanthur	Dug Well	3.8
1211	PATHANAMTHITTA	Naranganam (R1)	Dug Well	2.94
1212	PATHANAMTHITTA	Kadammanitta	Dug Well	6.9
1213	PATHANAMTHITTA	Ezhumattoor	Dug Well	4.65
1214	PATHANAMTHITTA	Chalappally	Dug Well	2.15
1215	THIRUVANANTHAPURAM	Aralumoodu	Dug Well	12.85
1216	THIRUVANANTHAPURAM	Vellayani (Poonkulam)	Dug Well	18.75
1217	THIRUVANANTHAPURAM	Sreekariyam Pz	Bore Well	13.18
1218	THIRUVANANTHAPURAM	Vizhinjam	Dug Well	1.44
1219	THIRUVANANTHAPURAM	Chaykottukonam	Dug Well	8.62
1220	THIRUVANANTHAPURAM	Vellarada(R1)	Dug Well	6.2
1221	THIRUVANANTHAPURAM	Vengod	Dug Well	7.86
1222	THIRUVANANTHAPURAM	Mangalapuram	Dug Well	21.16
1223	THIRUVANANTHAPURAM	Thumba	Dug Well	3.51
1224	THIRUVANANTHAPURAM	Pudukurichi	Dug Well	3.08
1225	THIRUVANANTHAPURAM	Ookod	Dug Well	12.3
1226	THIRUVANANTHAPURAM	Trivandrum	Dug Well	12.2
1227	THIRUVANANTHAPURAM	Kallikkad	Dug Well	2.44
1228	THIRUVANANTHAPURAM	Amboori	Dug Well	11.21
1229	THIRUVANANTHAPURAM	Vazhichal	Dug Well	7.13
1230	THIRUVANANTHAPURAM	Malayadi	Dug Well	5.73
1231	THIRUVANANTHAPURAM	Kandala	Dug Well	14.05
1232	THIRUVANANTHAPURAM	Kattakkada	Dug Well	4.14
1233	THIRUVANANTHAPURAM	Ariyanadu	Dug Well	5.18
1234	THIRUVANANTHAPURAM	Perumkadavila Pz	Bore Well	7.38
1235	THIRUVANANTHAPURAM	Ottashekharamangalam	Dug Well	4.35
1236	THIRUVANANTHAPURAM	Ayyankode	Dug Well	9.96
1237	THIRUVANANTHAPURAM	Kazhakkuttom	Dug Well	3.99
1238	THIRUVANANTHAPURAM	Murukumpuzha(R1)	Dug Well	3.56
1239	THIRUVANANTHAPURAM	Kilimannor	Dug Well	8.86
1240	THIRUVANANTHAPURAM	Thattattumala	Bore Well	6.3
1241	THIRUVANANTHAPURAM	Korani	Dug Well	9.24
1242	THIRUVANANTHAPURAM	Attingal	Dug Well	11.68
1243	THIRUVANANTHAPURAM	Valakkad	Dug Well	13.07
1244	THIRUVANANTHAPURAM	Melvettoor	Dug Well	34.25
1245	THIRUVANANTHAPURAM	Varkala	Dug Well	15.46
1246	THIRUVANANTHAPURAM	Edavai	Dug Well	9.07
1247	THIRUVANANTHAPURAM	Palayamkunnu	Dug Well	10.04
1248	THIRUVANANTHAPURAM	Pozhiyoor(R1)	Dug Well	5.43
1249	THIRUVANANTHAPURAM	Udyankulangara	Dug Well	11.1
1250	THIRUVANANTHAPURAM	Peringamala Pz	Bore Well	10.4
1251	THIRUVANANTHAPURAM	Vamanapuram	Dug Well	4.36
1252	THIRUVANANTHAPURAM	Pirappankod	Dug Well	8.14
1253	THIRUVANANTHAPURAM	Venjaramoodu	Dug Well	9.03
1254	THIRUVANANTHAPURAM	Pothencod	Dug Well	11.82

1255	THIRUVANANTHAPURAM	Chembur	Dug Well	11.79
1256	THIRUVANANTHAPURAM	Ponganadu	Dug Well	7.48
1257	THIRUVANANTHAPURAM	Cherunniyur	Dug Well	15.44
1258	THIRUVANANTHAPURAM	Edava	Tube Well	18.1
1259	THIRUVANANTHAPURAM	Peringamala	Dug Well	8.63
1260	THIRUVANANTHAPURAM	Vilapilshala	Dug Well	9.6
1261	THIRUVANANTHAPURAM	Anappara Valayanki	Dug Well	7.03
1262	THIRUVANANTHAPURAM	Vithura	Dug Well	11.19
1263	THIRUVANANTHAPURAM	Parandod	Dug Well	6.06
1264	THIRUVANANTHAPURAM	Meenangal	Dug Well	9.86
1265	THIRUVANANTHAPURAM	Chennampara	Dug Well	9.72
1266	THIRUVANANTHAPURAM	Ithye	Dug Well	8.39
1267	THIRUVANANTHAPURAM	Perumgulam	Dug Well	7.79
1268	THIRUVANANTHAPURAM	Mannanthala	Dug Well	7.65
1269	THIRUVANANTHAPURAM	Cheeranikara	Dug Well	9.87
1270	THIRUVANANTHAPURAM	Veeranakavu	Dug Well	5.31
1271	THIRUVANANTHAPURAM	Maruthamala	Dug Well	7.56
1272	THIRUVANANTHAPURAM	Nedumangad	Dug Well	9.12
1273	THIRUVANANTHAPURAM	Madavur	Dug Well	11.9
1274	THIRUVANANTHAPURAM	Parandakuzhi	Dug Well	16.87
1275	THIRUVANANTHAPURAM	Tirupuram	Dug Well	26.67
1276	THIRUVANANTHAPURAM	Puvar School (New)	Dug Well	8.83
1277	THIRUVANANTHAPURAM	Parassala	Dug Well	1.62
1278	THIRUVANANTHAPURAM	Chengal Pz	Bore Well	18.35
1279	THIRUVANANTHAPURAM	Kulathoor pz	Bore Well	14.1
1280	THIRUVANANTHAPURAM	Poovar-ii	Dug Well	21.17
1281	THIRUVANANTHAPURAM	Vattavila	Dug Well	9.37
1282	THIRUVANANTHAPURAM	Sasthanthala	Dug Well	7.72
1283	THIRUVANANTHAPURAM	Chittagode	Dug Well	6.28
1284	THIRUVANANTHAPURAM	Kulathur	Dug Well	10.92
1285	THIRUVANANTHAPURAM	Athazhamangalam	Dug Well	19.04
1286	THIRUVANANTHAPURAM	Kanjiramkulam	Dug Well	37.11
1287	THIRUVANANTHAPURAM	Venpakal	Dug Well	9.97
1288	THIRUVANANTHAPURAM	Nagapuram	Dug Well	15.01
1289	THIRUVANANTHAPURAM	Veyloor	Dug Well	26.62
1290	THIRUVANANTHAPURAM	Thonakkal	Dug Well	21.65
1291	THIRUVANANTHAPURAM	Attingal Pz	Bore Well	6.5
1292	THIRUVANANTHAPURAM	Manambur Pz	Bore Well	15.08
1293	THIRUVANANTHAPURAM	Balaramapuram(R1)	Dug Well	11.52
1294	THIRUVANANTHAPURAM	Neyyattinkara	Dug Well	15.3
1295	THIRUVANANTHAPURAM	Vilappilsala Pz	Bore Well	8.9
1296	THIRUVANANTHAPURAM	Karakulam	Dug Well	3.48
1297	THIRUVANANTHAPURAM	Mannanthala Pz	Bore Well	6.9
1298	THIRUVANANTHAPURAM	Pattom Pz	Bore Well	8.96
1299	THIRUVANANTHAPURAM	Venganoor	Dug Well	24.06

1300	THIRUVANANTHAPURAM	Mangalapuram Pz	Bore Well	20.8
1301	THIRUVANANTHAPURAM	Vengod Pz	Bore Well	5.4
1302	THIRUVANANTHAPURAM	Perumgur(R1)	Dug Well	4.97
1303	THIRUVANANTHAPURAM	Panavoor	Dug Well	4.28
1304	THIRUVANANTHAPURAM	Karinga	Dug Well	3.04
1305	THIRUVANANTHAPURAM	Aruvikara	Dug Well	3.88
1306	THIRUVANANTHAPURAM	Chullimanoor	Dug Well	6.79
1307	THIRUVANANTHAPURAM	Vattapara	Dug Well	10.79
1308	THIRUVANANTHAPURAM	Tholicode	Dug Well	8.08
1309	THIRUVANANTHAPURAM	Uzhamalakkal	Dug Well	7.16
1310	THIRUVANANTHAPURAM	Ariyanadu Pz	Bore Well	6.25
1311	THIRUVANANTHAPURAM	Shankaramugham	Dug Well	6.33
1312	THIRUVANANTHAPURAM	Vellanad	Dug Well	6.55
1313	THIRUVANANTHAPURAM	Poovachal	Dug Well	13.37
1314	THIRUVANANTHAPURAM	Arukannukuzhi	Dug Well	4.74
1315	THIRUVANANTHAPURAM	Changa	Dug Well	10.9
1316	THIRUVANANTHAPURAM	Vakkom	Dug Well	5.48
1317	THIRUVANANTHAPURAM	Chirayinkeezh	Dug Well	10.2
1318	THIRUVANANTHAPURAM	Perumathura	Dug Well	1.91
1319	THIRUVANANTHAPURAM	Tekkada	Dug Well	4.02
1320	THIRUVANANTHAPURAM	Kadakkavur(R1)	Dug Well	4.35
1321	THIRUVANANTHAPURAM	Azhoor	Dug Well	12.62
1322	THIRUVANANTHAPURAM	Sasthavattom	Dug Well	5.08
1323	THIRUVANANTHAPURAM	Perumkuzhi	Dug Well	4.25
1324	THIRUVANANTHAPURAM	Navaikulam	Dug Well	13.35
1325	THIRUVANANTHAPURAM	Kappil	Dug Well	11.55
1326	THIRUVANANTHAPURAM	Kallar	Dug Well	4.62
1327	THIRUVANANTHAPURAM	Nanniyode	Dug Well	6.97
1328	THIRUVANANTHAPURAM	Palode	Dug Well	6.86
1329	THIRUVANANTHAPURAM	Ponmudi(R1)	Dug Well	4.07
1330	THIRUVANANTHAPURAM	Bharathanoor	Dug Well	9.65
1331	THIRUVANANTHAPURAM	Pangode	Dug Well	6.58
1332	THIRUVANANTHAPURAM	Perunkadavila	Dug Well	10.42
1333	THIRUVANANTHAPURAM	Udayankulangara Pz	Bore Well	11.54
1334	THIRUVANANTHAPURAM	Kochuveli(R1)	Dug Well	2.53
1335	THIRUVANANTHAPURAM	Kariavattom	Dug Well	3.93
1336	THIRUVANANTHAPURAM	Kanjiramkulam Church	Dug Well	24.46
1337	THIRUVANANTHAPURAM	Mulloor	Dug Well	22.56
1338	THRISSUR	Nellai	Dug Well	4.94
1339	THRISSUR	Kodacherry	Dug Well	2.29
1340	THRISSUR	Trichur	Dug Well	8.3
1341	THRISSUR	Olarikara	Dug Well	9.46
1342	THRISSUR	Ramavarmapuram	Bore Well	15.71
1343	THRISSUR	Kurunchikara	Dug Well	10.39
1344	THRISSUR	Ayyanthole Pz	Bore Well	13.42

1345	THRISSUR	Madakkathara	Dug Well	9.4
1346	THRISSUR	Perambra	Dug Well	7.16
1347	THRISSUR	Pariyaram	Dug Well	6.64
1348	THRISSUR	Koratty	Dug Well	8.41
1349	THRISSUR	Rendamkallu	Dug Well	7.93
1350	THRISSUR	Konnakuzhi-ii	Dug Well	5.39
1351	THRISSUR	Azhikode (R1)	Dug Well	1.73
1352	THRISSUR	Karamuck ( Vadanappally)	Dug Well	3.14
1353	THRISSUR	Azhikode	Dug Well	1.73
1354	THRISSUR	Eriyad (R1)	Dug Well	1.46
1355	THRISSUR	Pallichira	Dug Well	4.92
1356	THRISSUR	Mulankunnathukavu	Dug Well	7.42
1357	THRISSUR	Manamangalam	Dug Well	6.32
1358	THRISSUR	Ollur	Dug Well	8.67
1359	THRISSUR	Vaniyampara	Dug Well	4.49
1360	THRISSUR	Kuttanellur	Dug Well	9.12
1361	THRISSUR	Vellanikara	Dug Well	3.82
1362	THRISSUR	Padakulam	Dug Well	3.18
1363	THRISSUR	Palayamthuruthu	Dug Well	1.12
1364	THRISSUR	Logamalleswaram	Dug Well	2.81
1365	THRISSUR	Ayyanthole	Dug Well	9.72
1366	THRISSUR	East Fort	Dug Well	8.11
1367	THRISSUR	Eyyal Ambalam Jn	Dug Well	9.31
1368	THRISSUR	Viyur	Dug Well	4.02
1369	THRISSUR	Pavaratty1	Dug Well	3.62
1370	THRISSUR	Mullassery	Dug Well	2.12
1371	THRISSUR	Chavakkad	Dug Well	3.19
1372	THRISSUR	Pattikad (R1)	Dug Well	5.57
1373	THRISSUR	Peechi (R1)	Dug Well	6.57
1374	THRISSUR	Kannara	Dug Well	6.59
1375	THRISSUR	Mannuthy	Dug Well	7.37
1376	THRISSUR	Parappur	Dug Well	10.27
1377	THRISSUR	Arimpur1	Dug Well	3.61
1378	THRISSUR	Keecheri	Dug Well	8.1
1379	THRISSUR	Keecheri (R1)	Dug Well	8.1
1380	THRISSUR	Arimpur	Bore Well	8.57
1381	THRISSUR	Adatt	Dug Well	11.66
1382	THRISSUR	Mundur	Dug Well	8.28
1383	THRISSUR	Kunnamkulam	Dug Well	7.52
1384	THRISSUR	Chowannur	Dug Well	9.47
1385	THRISSUR	Velur	Dug Well	7.12
1386	THRISSUR	Akalad	Dug Well	3.92
1387	THRISSUR	Athani Parambu	Dug Well	2.4
1388	THRISSUR	Orumanayur	Dug Well	2.68
1389	THRISSUR	Kottappadi	Dug Well	1.41



1390	THRISSUR	Pallikandam	Dug Well	4.04
1391	THRISSUR	Pappali	Dug Well	5
1392	THRISSUR	Punnayoor	Dug Well	4.96
1393	THRISSUR	Chowannur	Bore Well	20.63
1394	THRISSUR	Chammannur	Dug Well	3.62
1395	THRISSUR	Kattakampala (R1)	Dug Well	8.91
1396	THRISSUR	Kallumpuram	Dug Well	8.11
1397	THRISSUR	Choondal	Dug Well	9.04
1398	THRISSUR	Karikkad	Dug Well	8.22
1399	THRISSUR	Kattakampala	Dug Well	8.91
1400	THRISSUR	Guruvayur	Dug Well	2.28
1401	THRISSUR	Cheruthuruthi1	Dug Well	5.13
1402	THRISSUR	Cheruthuruthi (R1)	Dug Well	5.13
1403	THRISSUR	Pallikunnu	Dug Well	9.21
1404	THRISSUR	Chelakara Pz	Bore Well	7.81
1405	THRISSUR	Kizhakkumuri	Dug Well	7.34
1406	THRISSUR	Chelakod	Dug Well	3.42
1407	THRISSUR	Pazhayannur	Dug Well	6.66
1408	THRISSUR	Pullikanni	Dug Well	2.28
1409	THRISSUR	Ramanchetty	Dug Well	5.07
1410	THRISSUR	Chelakara	Dug Well	5.42
1411	THRISSUR	Killimangalam	Dug Well	7.76
1412	THRISSUR	Cherenkonam	Dug Well	6.41
1413	THRISSUR	Velur	Bore Well	13.79
1414	THRISSUR	Erumapetty	Dug Well	7.9
1415	THRISSUR	Wadakkancherry	Dug Well	11.72
1416	THRISSUR	Athani	Dug Well	7.23
1417	THRISSUR	Kurancherry	Dug Well	7.04
1418	THRISSUR	Kundannur	Dug Well	5.06
1419	THRISSUR	Attoor	Dug Well	8.02
1420	THRISSUR	Keecheri	Bore Well	8.19
1421	THRISSUR	Deshamangalam	Dug Well	8.72
1422	THRISSUR	Vettikkattiri	Dug Well	6.96
1423	THRISSUR	Varavur	Dug Well	6.92
1424	THRISSUR	Mullurkara(Vazhathodu Jn)	Dug Well	5.51
1425	THRISSUR	Vellikulangara	Dug Well	6.36
1426	THRISSUR	Konnakuzhi-i	Dug Well	5.39
1427	THRISSUR	Kanjirapally (Dream World Park)	Dug Well	5.02
1428	THRISSUR	Kallur	Dug Well	8.27
1429	THRISSUR	Cherukunnu	Dug Well	4.94
1430	THRISSUR	Madakkathara Pz	Bore Well	20.98
1431	THRISSUR	Potta	Dug Well	3.99
1432	THRISSUR	Chalakudi	Dug Well	8.91
1433	THRISSUR	Kallettumkara	Dug Well	6.89
1434	THRISSUR	Mala	Dug Well	8.91

1435	THRISSUR	Irinjalakuda -I	Dug Well	8.52
1436	THRISSUR	Puthenchira	Dug Well	9.04
1437	THRISSUR	Tekkumkara	Dug Well	7.61
1438	THRISSUR	Parappukara	Dug Well	5.19
1439	THRISSUR	Muriyad	Dug Well	9.16
1440	THRISSUR	Mapranam	Dug Well	13.04
1441	THRISSUR	Edathrinji	Dug Well	1.76
1442	THRISSUR	Mapranam Pz	Bore Well	13.28
1443	THRISSUR	Kattoor	Dug Well	6.03
1444	THRISSUR	Panamukku	Dug Well	8.82
1445	THRISSUR	Palakkal	Dug Well	10.04
1446	THRISSUR	Annamanada	Dug Well	4.81
1447	THRISSUR	Poyya (poopathy)	Bore Well	9.63
1448	THRISSUR	Poyya	Dug Well	12.66
1449	THRISSUR	Karuppadanna	Dug Well	2.28
1450	THRISSUR	Edamuttom	Dug Well	1.82
1451	THRISSUR	Perinjanam (R2)	Dug Well	1.62
1452	THRISSUR	Mathilakom (R1)	Dug Well	4.07
1453	THRISSUR	Cherpu	Dug Well	8.57
1454	THRISSUR	Echipara	Dug Well	3.32
1455	THRISSUR	Velupadam	Dug Well	5.81
1456	THRISSUR	Varavoor Pz	Bore Well	13.37
1457	THRISSUR	Kodakara Pz	Bore Well	13.79
1458	THRISSUR	Nandipulam	Dug Well	7.32
1459	THRISSUR	Pudukad1	Dug Well	2.7
1460	THRISSUR	Pazhuvil	Dug Well	9.87
1461	THRISSUR	Perumpilavu Junction	Dug Well	10.32
1462	THRISSUR	Vadanapalli	Dug Well	1.89
1463	THRISSUR	Nattika 1	Dug Well	2.21
1464	THRISSUR	Manalur	Dug Well	2.99
1465	THRISSUR	Triprayar	Dug Well	4.61
1466	THRISSUR	Engandiyur-R1	Dug Well	3.77
1467	THRISSUR	Amballur	Dug Well	7.82
1468	THRISSUR	Kodakara	Dug Well	8.13
1469	THRISSUR	Mattathur	Dug Well	8.22
1470	THRISSUR	Mupliyam	Dug Well	6.96
1471	THRISSUR	Varandarapalli	Bore Well	7.71
1472	THRISSUR	Kodali	Dug Well	6.04
1473	THRISSUR	Kodungallur (R1)	Dug Well	3.47
1474	WAYANAD	Lakkidi	Dug Well	1.04
1475	WAYANAD	Vyittiri	Dug Well	7.1
1476	WAYANAD	Valliyurkavu(w)	Bore Well	2.54
1477	WAYANAD	Pallikunnu	Dug Well	9.72
1478	WAYANAD	Meppady	Dug Well	17.7
1479	WAYANAD	Pookode	Bore Well	2.28

1480	WAYANAD	Pozhutana	Dug Well	6.48
1481	WAYANAD	Vaduvanchal	Dug Well	9.71
1482	WAYANAD	Nedugarana	Dug Well	9.1
1483	WAYANAD	Vallithodu (Periye)	Dug Well	7.97
1484	WAYANAD	Ambalavayal	Dug Well	9.5
1485	WAYANAD	Karani	Dug Well	7.96
1486	WAYANAD	Muttil	Dug Well	3.29
1487	WAYANAD	Padinjarattara	Dug Well	8.43
1488	WAYANAD	Kottathara	Bore Well	4.12
1489	WAYANAD	Kottathara	Dug Well	5.17
1490	WAYANAD	Pozhutana1	Bore Well	3.65
1491	WAYANAD	Arimula	Dug Well	9
1492	WAYANAD	Kavumandam	Dug Well	5.98
1493	WAYANAD	Vallathur	Dug Well	2.28
1494	WAYANAD	Melaputhenkunnu	Dug Well	16.39
1495	WAYANAD	Minangadi	Dug Well	6.9
1496	WAYANAD	Krishnagiri	Dug Well	7.51
1497	WAYANAD	Muthunga (R1)	Dug Well	4.43
1498	WAYANAD	Mullankolly	Dug Well	4.2
1499	WAYANAD	Cheyyambam	Dug Well	4.28
1500	WAYANAD	Chenad	Dug Well	16.8
1501	WAYANAD	Pulpally	Dug Well	3.92
1502	WAYANAD	Kuppadi(east)	Bore Well	19.87
1503	WAYANAD	Kuppadi	Dug Well	19.78
1504	WAYANAD	Nenmeni Kunnu	Dug Well	2.84
1505	WAYANAD	Moolankavu	Dug Well	8.31
1506	WAYANAD	CC Junction	Dug Well	11.72
1507	WAYANAD	Naykatti	Dug Well	6.33
1508	WAYANAD	Chellakod	Dug Well	8.84
1509	WAYANAD	Sulthan Battery	Dug Well	7.51
1510	WAYANAD	Pattanikooopu	Dug Well	9.24
1511	WAYANAD	Pakkam	Dug Well	6.76
1512	WAYANAD	Taruvana	Dug Well	10.48
1513	WAYANAD	Talapuzha	Dug Well	1.53
1514	WAYANAD	Tholpetty	Dug Well	9.08
1515	WAYANAD	Neervaram	Dug Well	17.24
1516	WAYANAD	Dasanakkara	Dug Well	3.68
1517	WAYANAD	Mannanthody	Dug Well	8.08
1518	WAYANAD	Ondyangadi	Dug Well	10.6
1519	WAYANAD	Begur	Dug Well	10.48
1520	WAYANAD	Nadavayal	Dug Well	7.46
1521	WAYANAD	Panamaram	Dug Well	4.23
1522	WAYANAD	Ullisseri	Dug Well	2.53
1523	WAYANAD	Kappiset	Dug Well	12.8
1524	WAYANAD	Perikallur	Dug Well	13.42

1525	WAYANAD	Koliyadi	Dug Well	2.52
1526	WAYANAD	Noolpuzha (R1)	Dug Well	3.52
1527	WAYANAD	Chulliyod	Dug Well	14.37
1528	WAYANAD	Pookode1	Dug Well	2.85
1529	WAYANAD	Kottavayal	Dug Well	1.75
1530	WAYANAD	Valliyurkavu(e)	Bore Well	2.52
1531	WAYANAD	Manjapara	Dug Well	8.8
1532	WAYANAD	Kamblakat	Dug Well	18.13
1533	WAYANAD	Padinjarattara (R1)	Dug Well	8.43
1534	WAYANAD	Baveli	Dug Well	8.07
1535	WAYANAD	Thavinjal Pz	Bore Well	2.44
1536	WAYANAD	Kattikulam	Dug Well	8.36
1537	WAYANAD	Appapara	Dug Well	3.53
1538	WAYANAD	Perya	Dug Well	1.87
1539	WAYANAD	Koodal Kadavu	Dug Well	13.56
1540	WAYANAD	Varayal	Dug Well	4.21
1541	WAYANAD	Kellur -5th Mile	Dug Well	15.06
1542	WAYANAD	Vellamunda	Dug Well	5.5
1543	WAYANAD	Kalpetta-R1	Dug Well	3.1
1544	WAYANAD	Pachilakkad	Dug Well	9.26
1545	WAYANAD	Thonichal	Dug Well	6.57
1546	WAYANAD	Thirunelly (R1)	Dug Well	5.33
1547	WAYANAD	Valliyur kavu	Dug Well	2.2
1548	WAYANAD	Kanjirangad	Dug Well	2.01
1549	WAYANAD	Koroth	Dug Well	3.25
1550	WAYANAD	Valad (R1)	Dug Well	10.38
1551	WAYANAD	Mampayil	Dug Well	2.37
1552	WAYANAD	Punchvayal	Dug Well	10.45
1553	WAYANAD	Thetrode	Dug Well	11.84



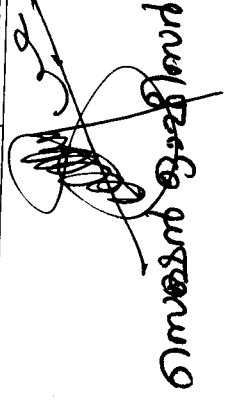
ഭംഗം - 3

Table 5.2: Summary of Major Components of Dynamic Ground Water Resources of Kerala (2013)

Sl. No.	District	Command / non-Command / Total (Sq.km)	Recharge from rainfall during monsoon season (MCM)	Recharge from other sources during monsoon season (MCM)	Recharge from rainfall during non-monsoon season (MCM)	Recharge from other sources during non-monsoon season (MCM)	Total Annual Ground Water Recharge (MCM)	Provision for Natural Discharges (MCM)	Net Annual Ground Water Availability (MCM)
1	2	3	4	5	6	7	8	9	10
1	ALAPPUZHA	1414.03	287.00	0.67	70.91	108.69	467.27	35.66	431.61
2	ERNAKULAM	2269.48	387.88	3.04	72.64	135.02	598.58	59.86	538.72
3	IDUKKI	1178.91	170.48	1.89	32.76	17.57	222.70	22.27	200.43
4	KANNUR	2323.96	452.81	0.00	0.00	68.31	521.12	52.11	469.01
5	KASARGOD	1631.30	310.39	8.15	0.00	46.90	365.44	36.54	328.89
6	KOLLAM	2110.97	273.79	1.38	89.49	38.80	403.46	38.91	364.55
7	KOTTAYAM	1945.10	315.97	1.05	66.07	69.94	453.04	45.30	407.74
8	KOZHIKODE	1661.80	353.93	1.48	0.00	13.17	368.58	36.86	331.72
9	MALAPPURAM	2541.81	421.01	3.30	64.01	85.52	573.83	56.96	516.87
10	PALAKKAD	2997.28	345.84	8.95	60.68	304.33	719.80	70.87	648.93
11	PATHANAMTHITTA	1296.65	182.11	1.54	60.55	34.61	278.81	24.69	254.11
12	TRIVANDRUM	1942.97	224.97	2.40	66.03	30.50	323.89	27.65	296.24
13	THRISSUR	2366.85	463.81	8.75	0.00	170.04	642.61	60.86	581.75
14	WAYANAD	1056.88	305.53	0.30	0.00	6.34	312.17	31.22	280.96
	KERALA STATE	26737.99	4495.53	42.89	583.14	1129.75	6251.31	599.77	5651.53
	(BCM)		4.50	0.04	0.58	1.13	6.25	0.60	5.65

Table.5.2 (Continued)

Sl. No.	District	Command/ non- Command/ Total	Net Annual Ground Water Availability (MCM)	Existing Gross Ground Water Draft for irrigation (MCM)	Existing Gross Ground Water Draft for domestic and industrial water supply (MCM)	Existing Gross Ground Water Draft for All uses (MCM)	Provision for domestic, and industrial requirement supply up to 2025 (MCM)	Net Ground Water Availability for future irrigation development (MCM)	Stage of Ground Water Development (%) (13*100/10)
1	2	3	10	11	12	13	14	15	16
1	ALAPPUZHA	Non-Command	431.61	38.93	98.55	137.48	94.53	298.15	31.85
2	ERNAKULAM	Non-Command	538.72	77.00	121.78	198.78	136.38	325.33	36.90
3	IDUKKI	Non-Command	200.43	55.16	46.37	101.53	40.46	104.81	50.65
4	KANNUR	Non-Command	469.01	80.12	105.67	185.79	109.99	278.89	39.61
5	KASARGOD	Non-Command	328.89	163.97	65.61	229.58	71.80	98.65	69.81
6	KOLLAM	Non-Command	364.55	49.95	112.82	162.77	128.93	185.67	44.65
7	KOTTAYAM	Non-Command	407.74	48.50	82.82	131.32	91.55	267.69	32.21
8	KOZHIKODE	Non-Command	331.72	44.11	134.29	178.39	145.90	141.44	53.78
9	MALAPPURAM	Non-Command	516.87	95.60	206.54	302.14	238.86	182.41	58.46
10	PALAKKAD	Non-Command	648.93	218.58	134.26	352.85	141.12	290.10	54.37
11	PATHANAMTHITTA	Non-Command	254.11	36.47	56.45	92.92	54.33	181.93	36.57
12	TRIVANDRUM	Non-Command	296.24	52.91	125.63	178.54	128.88	114.45	60.27
13	THRISSUR	Non-Command	581.75	204.70	123.37	328.08	129.38	247.66	56.40
14	WAYANAD	Non-Command	280.96	15.76	38.98	54.74	37.77	227.43	19.48
	KERALA STATE		5651.53	1181.77	1453.14	2634.91	1549.87	2944.62	46.62
	(BCM)		5.65	1.18	1.45	2.63	1.55	2.94	46.62

  
 Omesh Babu