

**പതിനാലാം കേരള നിയമസഭ**  
**പതിനൊന്നാം സമ്മേളനം**

നക്ഷത്രചിഹ്നമിടാത്ത ചോദ്യം നമ്പർ: 630

05.06.2018 ൽ മറുപടീക്ക്

**തെക്കേക്കര പല്ലാരിമംഗലം ഖാദിസൗഭാഗ്യ**


**ചോദ്യം**

ശ്രീ. ആർ. രാജേഷ്

**ഉത്തരം**

ശ്രീ. എ.സി. മൊയ്തീൻ  
(വ്യവസായവും സ്പോർട്ട്സും  
യുവജനകാര്യവും വകുപ്പ് മന്ത്രി)


(എ)	<p>തെക്കേക്കര പല്ലാരിമംഗലം ഖാദി സൗഭാഗ്യയ്ക്ക് പുതിയ കെട്ടിടം നിർമ്മിക്കുന്നതിന് വ്യവസായ വകുപ്പ് തയ്യാറാക്കിയ പദ്ധതിയുടെയും എസ്റ്റിമേറ്റിന്റെയും വിശദവിവരം ലഭ്യമാക്കുമോ;</p>	<p>തെക്കേക്കര പല്ലാരിമംഗലം ഖാദി സൗഭാഗ്യയ്ക്ക് പുതിയ കെട്ടിടം നിർമ്മിക്കുന്നതിന് 01.11.14 ലെ സ.ഉ. (സാധാ)നം.1226/14/വ്യവ പ്രകാരം ശ്രീ. ആർ. രാജേഷ് എം.പി. യുടെ ആസ്തിവികസന ഫണ്ടിൽ നിന്നും 25 ലക്ഷം രൂപയുടെ ഭരണാനുമതി നൽകിയിരുന്നു. എന്നാൽ പ്രസ്തുത തുക പര്യാപ്തമല്ലാത്തതിനാൽ, 50 ലക്ഷം രൂപയുടെ പുതുക്കിയ ശുപാർശ വ്യവസായ വാണിജ്യ ഡയറക്ടർ ലഭ്യമാക്കുകയും അധികധനം ആവശ്യപ്പെടുകയും ചെയ്തിട്ടുണ്ട്. പ്രസ്തുത പദ്ധതിക്ക് പുതുക്കിയ ഭരണാനുമതി പുറപ്പെടുവിക്കുന്ന കാര്യം സർക്കാർ പരിശോധിച്ച് വരുന്നു. പദ്ധതിക്കായി പൊതുമരാമത്ത് വകുപ്പ് തയ്യാറാക്കിയ പുതുക്കിയ എസ്റ്റിമേറ്റ് അനുബന്ധമായി ചേർക്കുന്നു.</p>
(ബി)	<p>പ്രസ്തുത പദ്ധതിയുടെ ഭരണ-സാങ്കേതികാനുമതിയുടെ വിശദാംശങ്ങൾ ലഭ്യമാക്കുമോ?</p>	

  
 സെക്ഷൻ ഓഫീസർ

**ESTIMATE REPORT**

Name of work : Construction of a building for KHADI Survodaya Sangam at Mavelikara

This estimate is for the construction of a new building for the KHADI survodaya sangam at mavelikara. Estimate includes construction of two storeyed RCC framed structure with office room and go down in ground floor and two rooms and a hall with stair room in first floor. Total plinth area of building comes to 174 m2. flooring is provided with vitrified floor tiles and wall tiles were provided in toilet, water supply and sanitary arrangements were made in this estimate. separate provision for electrification and quality control works were arranged in this estimate.

Sd/-  
HYDRU. EK  
Chief Engineer  
P.W.D. Buildings  
Submitted by order  
  
**BINGER**  
Executive Engineer  
Mavelikara,  
C.E. (P.W.D. Buildings) or  
P.W.D. Buildings, Mavelikara

## Detailed Estimate

Construction of a building for KHADI Survodaya Sangam at Mavelikara

(Dsr year: 2016, Cost Index: 54.9%)

Sl No	Description	No	L	B	D	CF	Quantity	Remark	
<b>1 APPX -A- Building proper</b>									
1	15.41 Dismantling cement asbestos or other hard board ceiling or partition walls including stacking of serviceable materials and disposal of unserviceable materials within 50 metres lead.								
	AC sheet	1	14.500	5.800			84.100		
	Total Quantity							84.100 sqm	
	Total Deducted Quantity							0.000 sqm	
	Net Total Quantity							84.100 sqm	
	Say 84.100 sqm @ Rs 37.64 / sqm							<b>Rs 3165.52</b>	
2	od18984/2016_2017 Engaging labour for other petty works such as cleaning etc.								
	Man mazdoor	20					20.000		
	Total Quantity							20.000 each	
	Total Deducted Quantity							0.000 each	
	Net Total Quantity							20.000 each	
	Say 20.000 each @ Rs 750.0 / each							<b>Rs 15000.00</b>	
3	2.8.1 Earth work in excavation by mechanical means (Hydraulic excavator) /manual means in foundation trenches or drains (not exceeding 1.5 m in width or 10 sqm on plan), including dressing of sides and ramming of bottoms, lift up to 1.5 m, including getting out the excavated soil and disposal of surplus excavated soil as directed, within a lead of 50 m. All kinds of soil								
	Footing	15	2.000	2.000	1.500		90.000		
		5	1.800	1.800	1.500		24.300		
	main wall	4	11.550	0.400	0.150		2.772		
	Cross wall	5	7.350	0.400	0.150		2.205		
	Step	1	11.550	1.200	0.300		4.158		
	Total Quantity							123.435 cum	
	Total Deducted Quantity							0.000 cum	
	Net Total Quantity							123.435 cum	
	Say 123.435 cum @ Rs 257.75 / cum							<b>Rs 31815.37</b>	

4 4.1.8

Providing and laying in position cement concrete of specified grade excluding the cost of centering and shuttering - All work up to plinth level <br>1:4:8 (1 cement : 4 coarse sand : 8 graded stone aggregate 40 nominal size)

Footing	15	2.000	2.000	0.150	9.000
	5	1.800	1.800	0.150	2.430
Mainwall	4	11.550	0.500	0.150	3.456
cross wall	5	7.350	0.400	0.150	2.205
Step	1	11.250	0.700	0.150	1.182
stair foundation	1	1.000	0.800	0.150	0.120
Toilet	1	1.800	0.230	0.150	0.063
Office	2	2.700	2.700	0.075	1.094
Godown	1	5.800	5.600	0.075	2.435
stair room	1	5.600	1.800	0.075	0.756
verandhah	1	10.700	1.800	0.075	1.445

Total Quantity 24.197 cum

Total Deducted Quantity 0.000 cum

Net Total Quantity 24.197 cum

Say 24.197 cum @ Rs 6936.65 / cum Rs 167846.12

5

5.9.1

Centering and shuttering including strutting, etc. and removal of form for:<br>Foundations, footings, bases of columns, etc for mass concrete

Footing F1	20	7.200	0.300		43.200
main wall	8	11.200	0.450		40.320
cross wall	14	7.000	0.450		44.100
toilet portion	2	1.800	0.300		1.080
basement top belt	2	79.400	0.100		15.881

Total Quantity 144.581 sqm

Total Deducted Quantity 0.000 sqm

Net Total Quantity 144.581 sqm

Say 144.581 sqm @ Rs 300.43 / sqm Rs 43436.47

6

5.1.2

Providing and laying in position specified grade of reinforced cement concrete, excluding the cost of centering, shuttering, finishing and reinforcement - All work up to plinth level:<br>1:1:5:3 (1 cement 1.5 coarse sand : 3 graded stone aggregate 20 mm nominal size)

Footing F1	15	1.600	1.600	0.300	11.520
	5	1.400	1.600	0.300	3.360
haunge	15	0.950	1.050	0.250	3.741
	5	0.850	1.050	0.250	1.116
column up to ground level	20	0.500	0.500	0.800	4.000
plinth	4	11.000	0.300	0.450	5.940
do	5	7.500	0.300	0.450	5.063
Total Quantity					34.741 cum
Total Deducted Quantity					0.000 cum
Net Total Quantity					34.741 cum
Say 34.741 cum @ Rs 9627.58 / cum					<b>Rs 334471.76</b>
7	5.9.5 Centering and shuttering including strutting, etc. and removal of form for: Lintels, beams, plinth beams, girders bressumers and cantilevers				
columns	15	1.3600	3.000		61.200
	5	1.200	3.000		18.000
lintels	1	55.500	0.150		8.325
roof beam	1	79.000	0.830		65.570
Roof slab	1	11.500	8.200		94.300
sun shade	1	36.200	0.700		25.340
Stair flight	1	8.150	1.150		9.373
stair landing ( top)	2	1.800	1.150		4.140
stair supporting beam	1	2.000	0.600		1.200
steps	22	2.000	0.150		6.600
first floor column	15	1.360	3.000		61.200
	5	1.200	3.000		18.000
shade	1	36.200	0.700		25.340
lintel	2	55.500	0.150		16.650
stair flight	2	8.150	1.150		18.745
Stair landing	1	1.800	1.150		2.070
steps	22	1.000	0.150		3.300
beam	1	79.840	0.800		63.873
roof slab	1	11.500	7.520		86.480

Total Quantity 589.706 sqm

Total Deducted Quantity 0.000 sqm

Net Total Quantity 589.706 sqm

Say 589.706 sqm @ Rs 531.15 / sqm Rs 313222.34

8	5.2.2	Reinforced cement concrete work in walls (any thickness), including attached pilasters, buttresses, plinth and string courses, fillets, columns, pillars, piers, abutments, posts and struts etc. up to floor five level excluding cost of centering, shuttering, finishing and reinforcement : </br>1:1.5:3( 1 cement : 1.5 coarse sand : 3 graded stone aggregate 20 mm nominal size)					
	columns	15	0.230	0.450	3.000	4.658	
		5	0.300	0.300	3.000	1.350	
	lintels	1	55.500	0.200	0.150	1.666	
	roof beam	1	79.000	0.230	0.450	8.177	
	Roof slab	1	11.500	8.200	0.120	11.316	
	sun shade	1	36.200	0.900	0.075	2.444	
	Stair flight	1	8.150	1.000	0.150	1.223	
	stair landing ( top)	2	1.800	1.000	0.150	0.540	
	stair supporting beam	1	2.000	0.230	0.450	0.208	
	steps	22	1.000	0.300	0.150	0.990	
	first floor column	15	0.230	0.450	3.000	4.658	
		5	0.300	0.300	3.000	1.350	
	shade	1	36.200	0.900	0.075	2.444	
	lintel	2	55.500	0.200	0.150	3.331	
	stair flight	2	8.150	1.000	0.150	2.445	
	Stair landing	1	1.800	1.000	0.150	0.270	
	steps	22	1.000	0.300	0.150	0.990	
	beam	1	79.840	0.230	0.450	8.264	
	roof slab	1	11.500	7.520	0.120	10.378	
					Total Quantity	66.702 cum	
					Total Deducted Quantity	0.000 cum	
					Net Total Quantity	66.702 cum	
					Say 66.702 cum @ Rs 11068.84 / cum	Rs 738313.77	

9 5.22.6

Steel reinforcement for R.C.C work including straightening, cutting, bending, placing in position and binding all complete upto plinth level&lt;/br&gt;Thermo - Mechanically Treated bars

item no 6	34.74			100.0	3474.000		
item no 8	66.702			100.0	6670.200		
Total Quantity						10144.200 kilogram	
Total Deducted Quantity						0.000 kilogram	
Net Total Quantity						10144.200 kilogram	
Say 10144.200 kilogram @ Rs 87.67 / kilogram						<b>Rs 889342.01</b>	
10	50.9.1.1 Providing wood work in frames of doors, windows, clerestory windows and other frames, wrought framed and fixed in position with hold fast lugs or with dash fasteners of required dia & length (hold fast lugs or dash fastener shall be paid for separately), using good quality Anjili wood /jack wood						
	door 2 x 7 D1	14	2.100	0.100	0.070		0.206
	do hori	14	1.300	0.100	0.070		0.128
	door 2 x 2 D2	4	1.000	0.100	0.070		0.029
		4	2.100	0.100	0.070		0.059
	windows	36	1.100	0.100	0.070		0.278
	do	54	1.500	0.100	0.070		0.568
	ventilator	2	0.800	0.100	0.070		0.012
		2	0.600	0.100	0.070		0.009
Total Quantity						1.289 cum	
Total Deducted Quantity						0.000 cum	
Net Total Quantity						1.289 cum	
Say 1.289 cum @ Rs 103913.42 / cum						<b>Rs 133944.40</b>	
11	50.6.1.5 Solid block masonry using pre cast solid blocks ( Factory made) of size 30x20x20cm or nearest available size confirming to IS 2185 Part I of 1979 for super structure up to floor two level thickness 20cm and above in: CM 1:6 ( 1 cement : 6 coarse sand) etc complete						
	Ground floor	1					0.000
	main wall	1	36.200	0.200	3.000		21.721
	crosswall	2	5.600	0.200	3.000		6.720
	Toilet	1	1.800	0.200	2.100		0.757
	step	1	11.100	0.600	0.150		0.999
	First floor main wall	1	36.200	0.200	3.000		21.721
	cross wall	3	5.600	0.200	3.000		10.080
		1	2.700	0.200	3.000		1.620
	stair head room	1	12.000	0.200	3.000		7.201

parapet	1	37.000	0.200	0.600	4.440
verandhah	1	14.700	0.200	1.000	2.940
door	7	1.200	0.200	2.100	-3.528
	2	0.800	0.200	2.100	-0.672
windows	18	1.100	0.200	1.500	-5.940
ventilator	1	0.800	0.200	0.600	-0.096
stairportion	1	1.800	0.200	2.100	-0.756
				Total Quantity	78.199 cum
				Total Deducted Quantity	-10.992 cum
				Net Total Quantity	67.207 cum
				Say 67.207 cum @ Rs 5992.34 / cum	<b>Rs 402727.19</b>
12	9.53	Providing 40x5 mm flat iron hold fast 40 cm long including fixing to frame with 10 mm diameter bolts, nuts and wooden plugs and embeddings in cement concrete block 30x10x15 cm 1:3:6 mix ( 1 cement : 3 coarse sand : 6 graded stone aggregate 20 mm nominal size)			
doors & windows total	128				128.000
				Total Quantity	128.000 each
				Total Deducted Quantity	0.000 each
				Net Total Quantity	128.000 each
				Say 128.000 each @ Rs 183.71 / each	<b>Rs 23514.88</b>
13	50.9.2.1	Providing and fixing paneled and glazed shutters for doors, windows and clerestory windows, 35 mm thick shutters including ISI marked M.S. pressed butt hinges bright finished of required size with necessary screws, excluding panelling which will be paid for separately, all complete as per direction of Engineerin - charge.using Anjili/ Jack wood			
doors	8	1.080		2.030	17.540
				Total Quantity	17.540 sqm
				Total Deducted Quantity	0.000 sqm
				Net Total Quantity	17.540 sqm
				Say 17.540 sqm @ Rs 2994.32 / sqm	<b>Rs 52520.37</b>
14	50.9.3.1	Providing and fixing paneled or paneled and glazed shutters for doors, windows and clerestory windows, 30 mm thick shutters including ISI marked M.S. pressed butt hinges bright finished of required size with necessary screws, excluding panelling which will be paid for separately, all complete as per direction Of Engineer in- charge. using Anjili/ Jack wood			
windows	36	0.430		1.380	21.363



	ventilators	2	0.320		0.480		0.308
						Total Quantity	21.671 sqm
						Total Deducted Quantity	0.000 sqm
						Net Total Quantity	21.671 sqm
						Say 21.671 sqm @ Rs.2730.81 / sqm	Rs 59179.38
15	9.118.1						
	<p>Providing and fixing to existing door frames&lt;br&gt;24 mm thick factory made PVC door shutters made of styles and rails of a uPVC hollow section of size 59x24 mm and wall thickness 2 mm (<math>\pm</math> 0.2 mm) with inbuilt edging on both sides. The styles and rails mitred and joint at the corners by means of M.S. galvanised/plastic brackets of size 75x220 mm having wall thickness 1.0 mm and stainless steel screws. The styles of the shutter reinforced by inserting galvanised M.S. tube of size 20x20 mm and 1 mm (<math>\pm</math> 0.1 mm) wall thickness. The lock rail made up of 'H' section, a uPVC hollow section of size 100x24 mm and 2 mm (<math>\pm</math> 0.2 mm) wall thickness, fixed to the shutter styles by means of plastic/galvanised M.S. 'U' cleats. The shutter frame filled with a uPVC multi-chambered single panel of size not less than 620 mm, having over all thickness of 20 mm and 1 mm (<math>\pm</math> 0.1 mm) wall thickness. The panels filled vertically and tie bar at two places by inserting horizontally 6 mm galvanised M.S. rod and fastened with nuts and washers, complete as per manufacturer's specification and direction of Engineer-in-charge( For W.C. and bathroom door shutter).</p>						
		1	0.700		2.100		1.470
						Total Quantity	1.470 sqm
						Total Deducted Quantity	0.000 sqm
						Net Total Quantity	1.470 sqm
						Say 1.470 sqm @ Rs 2788.97 / sqm	Rs 4099.79
16	9.119						
	<p>Providing and fixing factory made P.V.C. door frame of size 50x47 mm with a wall thickness of 5 mm, made out of extruded 5 mm rigid PVC foam sheet, mitred at corners and joined with 2 Nos. of 150 mm long brackets of 15x15 mm M.S. square tube, the vertical door frame profiles to be reinforced with 19x19 mm M.S. square tube of 19 gauge, EPDM rubber gasket weather seal to be provided through out the frame. The door fame to be fixed to the wall using M.S. screws of 65/100 mm size, complete as per manufacturer's specification and direction of Engineer-in Charge.</p>						
		1	5.000				5.000
						Total Quantity	5.000 metre
						Total Deducted Quantity	0.000 metre
						Net Total Quantity	5.000 metre
						Say 5.000 metre @ Rs 679.62 / metre	Rs 3398.10
17	13.16.1						
	6 mm cement plaster of mix: 1:3 ( 1 cement : 3 fine sand)						
	ground floor	2	2.700		2.700		14.581

	godown	1	5.800	5.600		32.480
	toilet	1	1.800	1.500		2.700
	verandhah	1	10.700	1.800		19.260
	stair flight	1	8.150	1.000		8.150
	stair landing	1	1.800	1.500		2.700
	sun shade	2	12.300	0.600		14.760
		2	7.000	0.600		8.400
	Roof slab out side	1	37.000	0.200		7.400
	First floor office	2	2.700	2.700		14.581
	hall	2	2.800	5.600		31.360
	verandhah	1	11.100	1.800		19.980
	stair portion	1	1.800	1.500		2.700
	stair flight	1	8.150	1.000		8.150
	stair landing	1	1.800	1.000		1.800
	Roof slab out side	1	37.000	0.200		7.400
	Head room roof slab	1	4.500	3.400		15.300
	shade	2	12.300	0.600		14.760
		2	12.300	0.600		14.760
		Total Quantity				241.222 sqm
		Total Deducted Quantity				0.000 sqm
		Net Total Quantity				241.222 sqm
		Say 241.222 sqm @ Rs 222.75 / sqm				Rs 53732.20
18	13.9.1 Cement plaster 1:3 ( 1 cement : 3 coarse sand) finished with a floating coat of neat cement. 12 mm cement plaster					
	roofslab	1	13.700	10.200		139.740
		Total Quantity				139.740 sqm
		Total Deducted Quantity				0.000 sqm
		Net Total Quantity				139.740 sqm
		Say 139.740 sqm @ Rs 363.55 / sqm				Rs 50802.48
19	13.7.2 12 mm cement plaster finished with a floating coat of neat cement of mix: 1:4 ( 1 cement . 4 fine sand)					
	first floor	1	11.500	7.400		85.101

stair head room	2	4.500	2.200		19.800
GF&FF Wall outside	2	34.200	4.200		287.281
verandhah portion outside	1	15.300	2.200		33.661
inside ofverandhah	1	107.000	2.200		235.400
inside	2	5.400	3.300		35.640
godown	1	22.620	3.300		74.646
columns all round	6	0.900	3.000		16.201
extra projection for column	28	0.100	3.000		8.401
stair portion	1	13.000	3.300		42.900
toilet	1	5.600	2.100		11.760
beam out side	2	5.400	0.300		3.240
	2	5.600	0.300		3.360
	1	2.700	0.300		0.810
Basement	1	36.500	0.500		18.250
	1	36.500	0.500		18.250
D	5	0.900	2.100		-9.450
W	11	1.500	1.500		-24.750
V	3	1.000	0.600		-1.799
Colapsible gate	2	1.500	2.100		-6.300
				Total Quantity	894.701 sqm
				Total Deducted Quantity	-42.299 sqm
				Net Total Quantity	852.402 sqm
				Say 852.402 sqm @ Rs 331.8 / sqm	Rs 282826.98
20	11.41.2	Providing and laying vitrified floor tiles in different sizes (thickness to be specified by the manufacturer) with water absorption less than 0.08% and conforming to IS : 15622, of approved make, in all colours and shades, laid on 20 mm thick cement mortar 1:4(1 cement : 4 coarse sand), including grouting the joints with white cement and matching pigments etc., complete. Size of Tile 600 x 600 mm.			
Office	2	2.700	2.700		14.581
skirting	2	10.800		0.150	3.240
Godown	1	5.800	5.600		32.480
skirting	1	22.800		0.150	3.420
stair room	1	5.600	1.800		10.080

	skirting	1	14.500	0.150	2.220
	verandhah	1	10.700	1.800	19.260
	skirting	1	25.000	0.150	3.750
	stair step tread	44	1.000	0.300	13.200
	Rise	43	1.000	0.150	6.450
	sides	4	4.380	0.150	2.628
	Office	2	2.700	2.700	14.581
	skirting	2	10.800	0.150	3.240
	hall	2	2.800	5.600	31.360
	skirting	2	16.800	0.150	5.040
	verandhah	1	10.700	1.800	19.260
	skirting	1	25.000	0.150	3.750
				<b>Total Quantity</b>	<b>188.540 sqm</b>
				<b>Total Deducted Quantity</b>	<b>0.000 sqm</b>
				<b>Net Total Quantity</b>	<b>188.540 sqm</b>
				<b>Say 188.540 sqm @ Rs 1733.95 / sqm</b>	<b>Rs 326918.93</b>
21	11.37	<p>Providing and laying Ceramic glazed floor tiles of size 300x300 mm (thickness to be specified by the manufacturer), of 1st quality conforming to IS : 15622, of approved make, in colours such as White, Ivory, Grey, Fume Red Brown, laid on 20 mm thick cement mortar 1:4 (1 Cement : 4 Coarse sand), including pointing the joints with white cement and matching pigment etc., complete.</p>			
	w c	1	2.000	1.500	3.000
				<b>Total Quantity</b>	<b>3.000 sqm</b>
				<b>Total Deducted Quantity</b>	<b>0.000 sqm</b>
				<b>Net Total Quantity</b>	<b>3.000 sqm</b>
				<b>Say 3.000 sqm @ Rs 1066.25 / sqm</b>	<b>Rs 3198.75</b>
22	11.36	<p>Providing and fixing 1st quality ceramic glazed wall tiles conforming to IS : 15622 (thickness to be specified by the manufacturer), of approved make, in all colours, shades except burgundy, bottle green, black of any size as approved by Engineer -in-Charge, in skirting, risers of steps and dados, over 12 mm thick bed of cement mortar 1:3 (1 cement : 3 coarse sand) and jointing with grey cement slurry @ 3.3 kg per sqm, including pointing in white cement mixed with pigment of matching shade complete.</p>			
	w c	1	7.000	2.100	14.701
				<b>Total Quantity</b>	<b>14.701 sqm</b>
				<b>Total Deducted Quantity</b>	<b>0.000 sqm</b>
				<b>Net Total Quantity</b>	<b>14.701 sqm</b>

						Say 14.701 sqm @ Rs 1153.7 / sqm	Rs 15960.54
23	od22556/2017_2018					White washing with cement to give an even shade: New work (three or more coats)	
	Item no 18	1	680.000				680.000
						Total Quantity	680.000 sqm
						Total Deducted Quantity	0.000 sqm
						Net Total Quantity	680.000 sqm
						Say 680.000 sqm @ Rs 26.58 / sqm	Rs 18074.40
24	13.50.1					Applying priming coat:  With ready mixed pink or Grey primer of approved and manufacture on wood work (hard and soft wood)	
	D	8	2.250	0.900	2.250		36.450
	W	17	1.000	1.500	1.500		38.250
	V	1	1.000	0.600	1.500		0.900
						Total Quantity	75.600 sqm
						Total Deducted Quantity	0.000 sqm
						Net Total Quantity	75.600 sqm
						Say 75.600 sqm @ Rs 54.14 / sqm	Rs 4092.98
25	13.61.1					Painting with synthetic enamel paint of approved brand and manufacture to give an even shade:  Two or more coats on new work	
	Item no 24	1	75.600				75.600
	gate	1	3.500	2.100	2.250		16.538
						Total Quantity	92.138 sqm
						Total Deducted Quantity	0.000 sqm
						Net Total Quantity	92.138 sqm
						Say 92.138 sqm @ Rs 121.44 / sqm	Rs 11189.24
26	13.80					Providing and applying white cement based putty of average thickness 1 mm, of approved brand and manufacturer, over the plastered wall surface to prepare the surface even and smooth complete.	
		1	556.210				556.210
						Total Quantity	556.210 sqm
						Total Deducted Quantity	0.000 sqm
						Net Total Quantity	556.210 sqm

Say 556.210 sqm @ Rs 135.38 / sqm      Rs 75298.74

27      13.50.1

Wall painting with acrylic emulsion paint of approved brand and manufacture to give an even shade:  
Two or more coats on new work

item no 15      1      780.000      780.000

Total Quantity      780.000 sqm

Total Deducted Quantity      0.000 sqm

Net Total Quantity      780.000 sqm

Say 780.000 sqm @ Rs 130.81 / sqm      Rs 102031.80

28      13.46.1

Finishing walls with Acrylic Smooth exterior paint of required shade:  
New work (Two or more coat applied @ 1.67 ltr/10 sqm over and including priming coat of exterior primer applied @ 2.20 kg/10 sqm)

Item no 18 (b)      1      300.000      300.000

Total Quantity      300.000 sqm

Total Deducted Quantity      0.000 sqm

Net Total Quantity      300.000 sqm

Say 300.000 sqm @ Rs 148.78 / sqm      Rs 44634.00

Sl No	Description	No	L	B	D	CF	Quantity	Remark
-------	-------------	----	---	---	---	----	----------	--------

**2 APPX : B : WATER SUPPLY AND SANITARY**

1      17.2.2

Providing and fixing white vitreous china pedestal type water closet (European type W.C. pan) with seat and lid, 10 litre low level white P.V.C. flushing cistern, including flush pipe, with manually controlled device (handle lever), conforming to IS : 7231, with all fittings and fixtures complete, including cutting and making good the walls and floors wherever required:  
W.C. pan with ISI marked black solid plastic seat and lid

W C Pan      1      1.000

Total Quantity      1.000 each

Total Deducted Quantity      0.000 each

Net Total Quantity      1.000 each

Say 1.000 each @ Rs 5259.55 / each      Rs 5259.55

2      17.7.1

Providing and fixing wash basin with C.I. brackets, 15 mm C.P. brass pillar taps, 32 mm C.P. brass waste of standard pattern, including painting of fittings and brackets, cutting and making good the walls wherever require:  
White Vitreous China Wash basin size 630x450 mm with a pair of 15 mm C.P. brass pillar taps

2      2.000

Total Quantity      2.000 each

							Total Deducted Quantity	0.000 each
							Net Total Quantity	2.000 each
							Say 2.000 each @ Rs 3560.45 / each	Rs 7120.90
3	17.10.2.1	Providing and fixing Stainless Steel A ISI 304 (18/8) kitchen sink as per IS 13983 with C.I. brackets and stainless steel plug 40 mm, including painting of fittings and brackets, cutting and making good the walls wherever required:  Kitchen sink without drain board 610x510 mm bowl depth 200 mm						
		1						1.000
							Total Quantity	1.000 each
							Total Deducted Quantity	0.000 each
							Net Total Quantity	1.000 each
							Say 1.000 each @ Rs 3836.25 / each	Rs 3836.25
4	50.18.9.9.2	Providing and fixing PVC pipes includes joints of pipes with one step PVC solvent cement, trenching, refilling & testing of joints complete as per direction of Engineer in CHarge. 110 mm dia 4 Kg/cm2						
		1	30.000					30.000
							Total Quantity	30.000 metre
							Total Deducted Quantity	0.000 metre
							Net Total Quantity	30.000 metre
							Say 30.000 metre @ Rs 409.89 / metre	Rs 12296.70
5	50.18.9.22.1	Providing and fixing PVC moulded fittings/ accessories for Rigid PVC pipes, including jointing with PVC solvent cement - 110 mm dia Elbow						
		3						3.000
							Total Quantity	3.000 no
							Total Deducted Quantity	0.000 no
							Net Total Quantity	3.000 no
							Say 3.000 no @ Rs 107.11 / no	Rs 321.33
6	50.18.9.22.6	Providing and fixing PVC moulded fittings/accessories for Rigid PVC pipes, including jointing with PVC solvent cement - 110x110x110 mm dia Door tee						
		3						3.000
							Total Quantity	3.000 no
							Total Deducted Quantity	0.000 no
							Net Total Quantity	3.000 no
							Say 3.000 no @ Rs 187.07 / no	Rs 561.21

7	50.18.9.22.4	Providing and fixing PVC moulded fittings/ accessories for Rigid PVC pipes, including jointing with PVC solvent cement- 110 mm dia Bend				
		3				3.000
		Total Quantity				3.000 no
		Total Deducted Quantity				0.000 no
		Net Total Quantity				3.000 no
		Say 3.000 no @ Rs 160.57 / no				Rs 481.71
8	50.18.9.22.8	Providing and fixing PVC moulded fittings /accessories for Rigid PVC pipes, including jointing with PVC solvent cement -110 mm dia Vent cowl				
		1				1.000
		Total Quantity				1.000 no
		Total Deducted Quantity				0.000 no
		Net Total Quantity				1.000 no
		Say 1.000 no @ Rs 123.35 / no				Rs 123.35
9	50.18.7.3.2	Providing and fixing PVC pipes, fittings including fixing the pipe with clamps at 1.00 m spacing. This includes jointing of pipes & fittings with one step PVC solvent cement and testing of joints complete as per direction of Engineer-in-Charge 25 mm dia 10Kgf/ cm2- Internal work- Exposed on wall				
		1	60.000			60.000
		Total Quantity				60.000 metre
		Total Deducted Quantity				0.000 metre
		Net Total Quantity				60.000 metre
		Say 60.000 metre @ Rs 216.59 / metre				Rs 12995.40
10	50.18.7.4.1	Providing and fixing PVC pipes, fittings including fixing the pipe with clamps at 1.00 m spacing. This includes jointing of pipes & fittings with one step PVC solvent cement and testing of joints complete as per direction of Engineer-in-Charge 32 mm dia 10Kgf/cm2- Internal work - Exposed on wall				
		1	20.000			20.000
		Total Quantity				20.000 metre
		Total Deducted Quantity				0.000 metre
		Net Total Quantity				20.000 metre
		Say 20.000 metre @ Rs 260.9 / metre				Rs 5218.00
11	18.17.1	Providing and fixing gun metal gate valve with C.I. wheel of approved quality (screwed end) : 25 mm				



nominal bore

		1				1.000
					Total Quantity	1.000 each
					Total Deducted Quantity	0.000 each
					Net Total Quantity	1.000 each
					Say 1.000 each @ Rs 663.28 / each	Rs 663.28
12	18.17.4	Providing and fixing gun metal gate valve with C.I. wheel of approved quality (screwed end) : 50 mm nominal bore				
		1				1.000
					Total Quantity	1.000 each
					Total Deducted Quantity	0.000 each
					Net Total Quantity	1.000 each
					Say 1.000 each @ Rs 1161.6 / each	Rs 1161.60
13	18.54.3	Providing and fixing PTMT bib cock of approved quality and colour. 15 mm nominal bore, 165 mm long, weighing not less than 110 gms				
		3				3.000
					Total Quantity	3.000 each
					Total Deducted Quantity	0.000 each
					Net Total Quantity	3.000 each
					Say 3.000 each @ Rs 244.59 / each	Rs 733.77
14	od39121/2017_2018	Supplaying& errecting readymade RCC septictank including all labour charge conveyance,etc complete.(50 users)				
		1				1.000
					Total Quantity	1.000 each
					Total Deducted Quantity	0.000 each
					Net Total Quantity	1.000 each
					Say 1.000 each @ Rs 34845.0 / each	Rs 34845.00
15	od39123/2017_2018	Supplying and providing granite address stone slab 20 mm thick etc. complete.				
		1				1.000
					Total Quantity	1.000 no
					Total Deducted Quantity	0.000 no

PRICE

Page No. 15

net Total Quantity 1.000

Say 1.000 no @ Rs 2758.25 / no Rs 2758.25

16 od39124/2017\_2018  
Providing PVC storage water tank including conveyance labour etc complete.

1 1.000

Total Quantity 1.000 L.S

Total Deducted Quantity 0.000 L.S

Net Total Quantity 1.000 L.S

Say 1.000 L.S @ Rs 9292.0 / L.S Rs 9292.00

17 od39126/2017\_2018  
Providing and fixing 15mm long body tap.

2 2.000

Total Quantity 2.000 each

Total Deducted Quantity 0.000 each

Net Total Quantity 2.000 each

Say 2.000 each @ Rs 718.2 / each Rs 1436.40

18 od22575/2017\_2018  
Providing and Fixing 1/2 HP motor including all fixing charges.

1 1.000

Total Quantity 1.000 no

Total Deducted Quantity 0.000 no

Net Total Quantity 1.000 no

Say 1.000 no @ Rs 7438.25 / no Rs 7438.25

19 16.91.1  
Providing and laying factory made chamfered edge Cement Concrete paver blocks in footpath, parks, lawns, drive ways or light traffic parking etc, of required strength, thickness & size/ shape, made by table vibratory method using PU mould, laid in required colour & pattern over 50mm thick compacted bed of sand, compacting and proper embedding/laying of inter locking paver blocks into the sand bedding layer through vibratory compaction by using plate vibrator, filling the joints with sand and cutting of paver blocks as per required size and pattern, finishing and sweeping extra sand. complete all as per direction of Engineer-in-Charge. <br> 60mm thick cement concrete paver block of M-35 grade with approved colour, design & pattern.

front yard 1 15.000 10.000 150.000

Total Quantity 150.000 sqm

Total Deducted Quantity 0.000 sqm

Net Total Quantity 150.000 sqm

RICE

Say 150,000 sqm @ Rs 1171.28 / sqm

20 10.25.2

Item Shifted to Sub head 14 as item 14.73  
Item Shifted to head 14 as item 14.74  
Steel work welded in built up sections/framed work, including cutting, hoisting, fixing in position and applying a priming coat of approved steel primer using structural steel etc as required.  
in gratings, frames, guard bar, ladder, railings, brackets, gates and similar works

new gate	1	250.000						250.000	
Total Quantity								250.000 kg	
Total Deducted Quantity								0.000 kg	
Net Total Quantity								250.000 kg	
Say 250.000 kg @ Rs 133.14 / kg									<b>Rs 33285.00</b>

Sl No	Description	No	L	B	D	CF	Quantity	Remark
-------	-------------	----	---	---	---	----	----------	--------

**4 ELECTRIFICATION**

Lump-Sum Total								<b>Rs 400000.00</b>
----------------	--	--	--	--	--	--	--	---------------------

Sl No	Description	No	L	B	D	CF	Quantity	Remark
-------	-------------	----	---	---	---	----	----------	--------

**5 Quality control works**

Lump-Sum Total								<b>Rs 78700.00</b>
----------------	--	--	--	--	--	--	--	--------------------

Service Tax @								<b>0.0%</b>
Service Tax Amount								<b>0.00</b>
Total with Service Tax Amount								<b>4999977.45</b>
Lumpsum for round off								<b>22.55</b>

**TOTAL Rs 5000000.00**

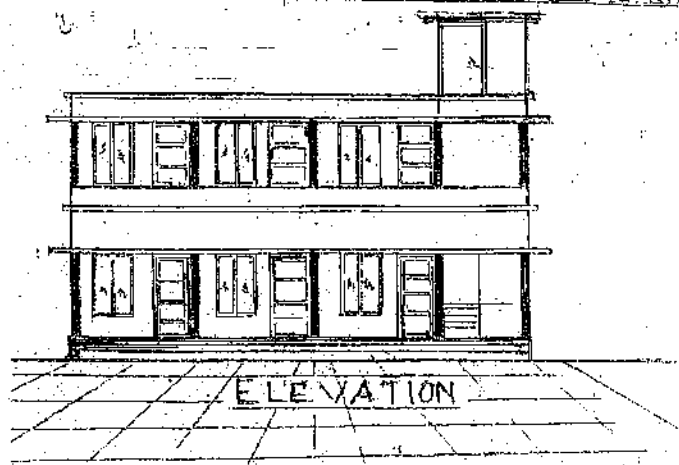
**Rounded Total Rs 50,00,000**

Rupees Fifty Lakh Only

(Cost Index Applied for this estimate is 54.9%)

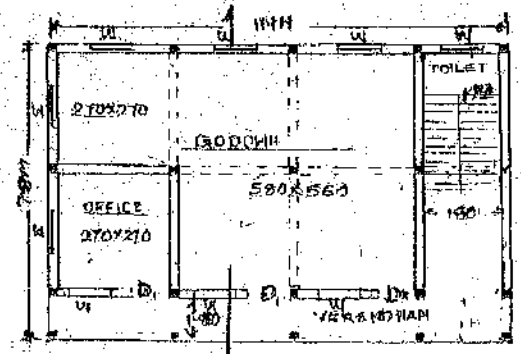
sd/-  
HYDRU. E.K  
Chief Engineer  
R.P.C. Building  
Rajahmundry

A LAD'S - CONSTRUCTION OF A NEW BUILDING TO KHADI SARVODAYA SAMITHI  
THEKKKADA

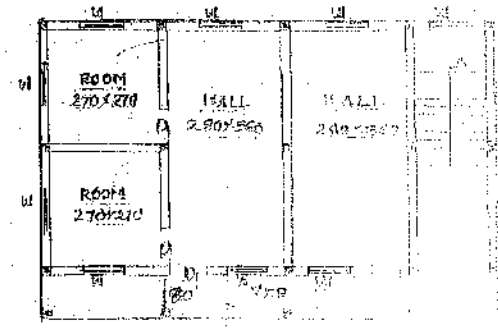


ALL DIMENSIONS IN CM  
SPECIFICATION

D1	DOOR	1000x2100
D2	"	800x2100
W1	WINDOW	1000x1500
V	VENTILATOR	800x600
S1	STEP	150x150
T1	TERRACE	2000



GROUND FLOOR



FIRST FLOOR

ASSISTANT ENGINEER  
P.W.D. Bulding Section  
Mavelkara

PLAN

10/1/2008

INDIAN INTEGRAL DEPARTMENT

ORDER  
The Director of Industries and Commerce, Government of Kerala, is directed to issue an administrative sanction for the construction of new building at the village of Thekkavara Village for Kerala Khadi Sarisocaya Sangham, Thekkavara Grama Panchayat, Mavelikkara Legislative Constituency for an amount of Rs. 25 lakhs Twenty Five Lakhs being the Legislative Assembly Constituency Asset Development Scheme of Smt. R. Rajesh M.L.A. Mavelikkara. It was also ordered that the expenditure will be debited under the P.A. 1951-1952 project under L.A. A.D.C.

ORDER

As per the D.O. read as above, the Director is directed to issue an administrative sanction for the construction of new building at the village of Thekkavara Village for Kerala Khadi Sarisocaya Sangham, Thekkavara Grama Panchayat, Mavelikkara Legislative Constituency for an amount of Rs. 25 lakhs Twenty Five Lakhs being the Legislative Assembly Constituency Asset Development Scheme of Smt. R. Rajesh M.L.A. Mavelikkara. It was also ordered that the expenditure will be debited under the P.A. 1951-1952 project under L.A. A.D.C.

The Director of Industries and Commerce was now informed that a copy of the Government order for development of project under the P.A. 1951-1952 project Government are pleased to clarify the P.A. mentioned in the order of the P.A. 1951-1952 Legislature Assembly Constituency Asset Development Scheme of Smt. R. Rajesh M.L.A. Mavelikkara. It was also ordered that the expenditure will be debited under the P.A. 1951-1952 project under L.A. A.D.C.

By order of the Director  
RAJESH K S  
Joint Secretary

48/10/13  
S.E. slugs

The Director of Industries and Commerce, Government of Kerala, is directed to issue an administrative sanction for the construction of new building at the village of Thekkavara Village for Kerala Khadi Sarisocaya Sangham, Thekkavara Grama Panchayat, Mavelikkara Legislative Constituency for an amount of Rs. 25 lakhs Twenty Five Lakhs being the Legislative Assembly Constituency Asset Development Scheme of Smt. R. Rajesh M.L.A. Mavelikkara. It was also ordered that the expenditure will be debited under the P.A. 1951-1952 project under L.A. A.D.C.

മുഖ്യമന്ത്രിയുടെ കാര്യാലയം

എക്സിക്യൂട്ടീവ് എൻ്റ്രിനിയർ  
പൊതുജനസേവന വകുപ്പ് കെട്ടിട വിഭാഗം  
അടങ്കൽ തിരുവനന്തപുരം

മുഖ്യമന്ത്രി

എക്സിക്യൂട്ടീവ് എൻ്റ്രിനിയർ

സ്വീകർത്താവ്

സുപ്രഭാഷ് എൻ്റ്രിനിയർ  
പൊതുജനസേവന വകുപ്പ് കെട്ടിട വിഭാഗം  
ലക്ഷണമല  
തിരുവനന്തപുരം.

സർ,

വിഷയം: മാർവേലിക്കര ഖാദി സർവ്വേദി സംഘത്തിന് പുതിയ കെട്ടിടം നിർമ്മാണം.  
സൂചന:- ജി.ഒ (ആർ.ടി ) നമ്പർ 356/2015/ഐ.ഡി തിരുവനന്തപുരം തീയതി 15/9/2015  
വ്യവസായ (കെ) വകുപ്പ്.

സൂചന പ്രകാരം മേൽ പ്രവൃത്തിക്ക് 25 ലക്ഷം രൂപയുടെ ഭരണാനുമതി  
ചിട്ടിയിട്ടുണ്ട്. വെക്കിലും ആയതിന്റെ കാലാവധി അവസാനിച്ചു. ആയതിനാൽ ഈ  
ജോലിക്കായി അസിസ്റ്റന്റ് എക്സിക്യൂട്ടീവ് എൻ്റ്രിനിയർ, പൊതുജനസേവന വകുപ്പ് കെട്ടിട ഉപ  
വിഭാഗം, എൻ്റ്രിനിയർ 20 ലക്ഷം രൂപയുടെ പുതുക്കിയ എസ്റ്റിമേറ്റ് അംഗീകാരത്തിനായി  
സമർപ്പിച്ചിട്ടുണ്ട്. ആയത് അംഗീകാരത്തിനായി പ്രൈം മുഖാന്തിരം അങ്ങയുടെ  
ഓഫീസിലേക്ക് സമർപ്പിച്ചിട്ടുണ്ട്. എസ്റ്റിമേറ്റ് തുകയും അംഗീകാരവും പൂർണ്ണമായിട്ടു  
ചിട്ടിക്കുന്നതിനുള്ള നടപടികൾ സ്വീകരിക്കണമെന്ന് അറിയിക്കുന്നു.

വിശ്വസ്തതയോടെ

എക്സിക്യൂട്ടീവ് എൻ്റ്രിനിയർ

റവന്യൂ ഓഫീസർ

എൻ്റ്രിനിയർ